



Datasheet for ABIN213439
anti-ERBB4 antibody (C-Term)



[Go to Product page](#)

2 Images

Overview

Quantity:	50 µg
Target:	ERBB4
Binding Specificity:	C-Term
Reactivity:	Human, Monkey
Host:	Rabbit
Clonality:	Polyclonal
Conjugate:	This ERBB4 antibody is un-conjugated
Application:	Immunohistochemistry (IHC), Immunohistochemistry (Paraffin-embedded Sections) (IHC (p))

Product Details

Brand:	IHC-plus™
Immunogen:	Synthetic 15 amino acid peptide from C-terminus of human ERBB4. Percent identity with other species by BLAST analysis: Human, Gorilla, Gibbon, Monkey, Marmoset (100%), Mouse, Rat, Dog, Bovine, Hamster, Panda, Horse, Pig, Platypus (93%), Bat, Opossum (87%), Turkey, Chicken (80%). Type of Immunogen: Synthetic peptide
Specificity:	Human ERBB4. BLAST analysis of the peptide immunogen showed no homology with other human proteins, except ERBB3 (60 %).
Predicted Reactivity:	Percent identity with other species by BLAST analysis: Human, Gorilla, Gibbon, Monkey, Marmoset (100%) Mouse, Rat, Dog, Bovine, Hamster, Panda, Horse, Pig, Platypus (93%) Bat,

Product Details

Opossum (87%) Turkey, Chicken (80%).

Purification: Immunoaffinity purified

Target Details

Target: ERBB4

Alternative Name: ERBB4 / HER4 ([ERBB4 Products](#))

Background: Name/Gene ID: ERBB4
Subfamily: EGF Receptor
Family: Protein Kinase

Synonyms: ERBB4, ERBB 4, HER4, p180 erb4, p180erbB4

Gene ID: 2066

Pathways: [RTK Signaling](#), [Fc-epsilon Receptor Signaling Pathway](#), [EGFR Signaling Pathway](#), [Neurotrophin Signaling Pathway](#)

Application Details

Application Notes: Approved: IHC, IHC-P (30 µg/mL)

Usage: Immunohistochemistry: This antibody was validated for use in immunohistochemistry on a panel of 21 formalin-fixed, paraffin-embedded (FFPE) human tissues after heat induced antigen retrieval in pH 6.0 citrate buffer. After incubation with the primary antibody, slides were incubated with biotinylated secondary antibody, followed by alkaline phosphatase-streptavidin and chromogen. The stained slides were evaluated by a pathologist to confirm staining specificity. The optimal working concentration for this antibody was determined to be 30-60 µg/mL.

Comment: Target Species of Antibody: Human

Restrictions: For Research Use only

Handling

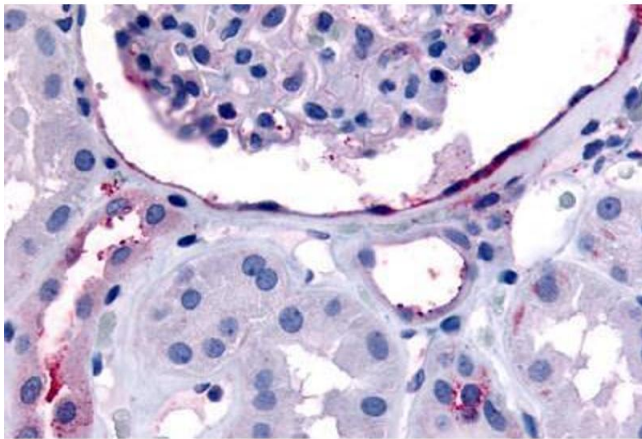
Format: Liquid

Concentration: Lot specific

Handling

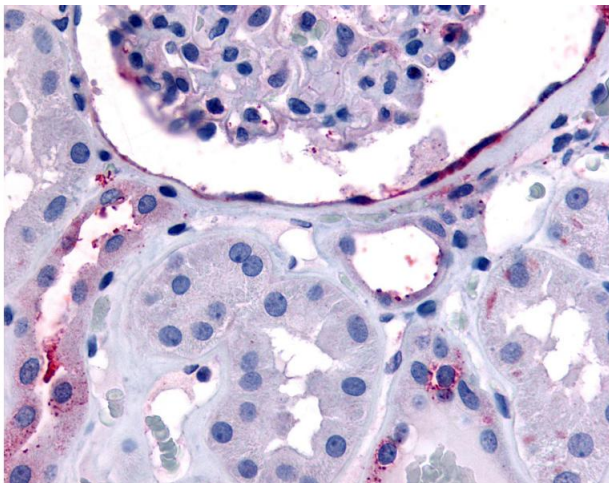
Buffer:	PBS, less than 0.1 % sodium azide.
Preservative:	Sodium azide
Precaution of Use:	This product contains Sodium azide: a POISONOUS AND HAZARDOUS SUBSTANCE which should be handled by trained staff only.
Storage:	4 °C,-20 °C
Storage Comment:	Aliquot and store undiluted at -20°C or below for up to 1 year. Can be stored undiluted at 4°C for up to 1 month. Avoid freeze-thaw cycles.
Expiry Date:	12 months

Images



Immunohistochemistry (Paraffin-embedded Sections)

Image 1. Human Glomerulus and Renal Tubular Epithelium in Cortex (formalin-fixed, paraffin-embedded) stained with ERBB4 antibody ABIN213439 at 30-60 ug/ml followed by biotinylated goat anti-rabbit IgG secondary antibody ABIN481713, alkaline phosphatase-streptavidin ...



Immunohistochemistry

Image 2. Anti-ERBB4 antibody IHC of human glomerulus and renal tubular epithelium in cortex. Immunohistochemistry of formalin-fixed, paraffin-embedded tissue after heat-induced antigen retrieval.