

Datasheet for ABIN213445
anti-CCR8 antibody (Cytoplasmic Domain)

2 Images

[Go to Product page](#)

Overview

Quantity:	50 µg
Target:	CCR8
Binding Specificity:	Cytoplasmic Domain
Reactivity:	Human
Host:	Rabbit
Clonality:	Polyclonal
Conjugate:	This CCR8 antibody is un-conjugated
Application:	ELISA, Immunohistochemistry (IHC), Immunohistochemistry (Paraffin-embedded Sections) (IHC (p))

Product Details

Brand:	IHC-plus™
Immunogen:	Synthetic 19 amino acid peptide from 3rd cytoplasmic domain of human CCR8. Percent identity with other species by BLAST analysis: Human, Gorilla, Monkey (100%), Gibbon, Marmoset (95%), Bovine, Horse (84%). Type of Immunogen: Synthetic peptide
Specificity:	Human CCR8. BLAST analysis of the peptide immunogen showed no homology with other human proteins.
Predicted Reactivity:	Percent identity with other species by BLAST analysis: Human, Gorilla, Monkey (100%) Gibbon, Marmoset (95%) Bovine, Horse (84%).

Product Details

Purification: Immunoaffinity purified

Target Details

Target: CCR8

Alternative Name: CCR8 ([CCR8 Products](#))

Background: Name/Gene ID: CCR8
Subfamily: Chemokine
Family: GPCR

Synonyms: CCR8, C-C chemokine receptor type 8, CC chemokine receptor CHEMR1, CC-CKR-8, Chemokine (C-C) receptor 8, CDw198 antigen, CKRL1, CMKBR8, Chemokine receptor-like 1, CMKBRL2, CKR-L1, GPRCY6, TER1, C-C CKR-8, CC chemokine receptor 8, CC-chemokine receptor chemr1, CCR-8, CDw198, CY6, GPR-CY6

Gene ID: 1237

Application Details

Application Notes: Approved: ELISA, IHC, IHC-P (5 µg/mL)

Usage: Immunohistochemistry: This antibody was validated for use in immunohistochemistry on a panel of 21 formalin-fixed, paraffin-embedded (FFPE) human tissues after heat induced antigen retrieval in pH 6.0 citrate buffer. After incubation with the primary antibody, slides were incubated with biotinylated secondary antibody, followed by alkaline phosphatase-streptavidin and chromogen. The stained slides were evaluated by a pathologist to confirm staining specificity. The optimal working concentration for this antibody was determined to be 5 µg/mL.

Comment: Target Species of Antibody: Human

Restrictions: For Research Use only

Handling

Format: Liquid

Concentration: Lot specific

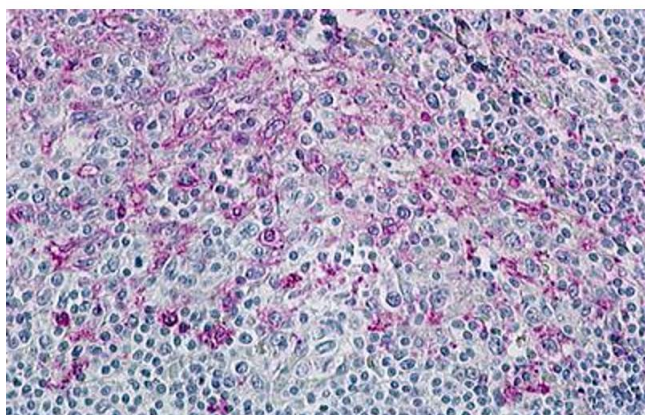
Buffer: PBS, less than 0.1 % sodium azide.

Preservative: Sodium azide

Handling

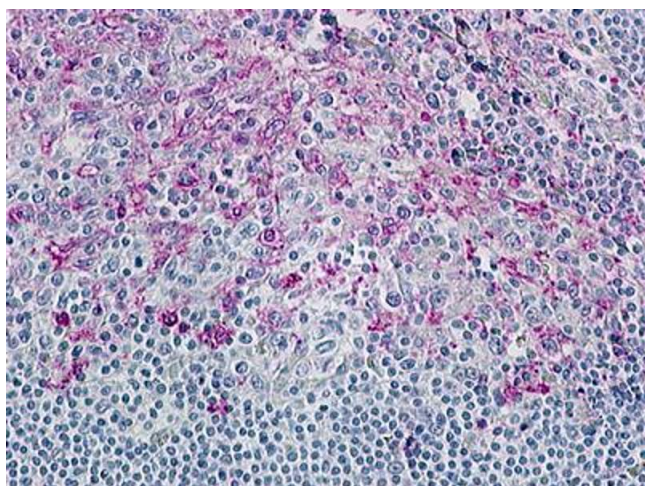
Precaution of Use:	This product contains Sodium azide: a POISONOUS AND HAZARDOUS SUBSTANCE which should be handled by trained staff only.
Storage:	4 °C, -20 °C
Storage Comment:	Aliquot and store undiluted at -20°C or below for up to 1 year. Can be stored undiluted at 4°C for up to 1 month. Avoid freeze-thaw cycles.
Expiry Date:	12 months

Images



Immunohistochemistry (Paraffin-embedded Sections)

Image 1. Human Tonsil (formalin-fixed, paraffin-embedded) stained with CCR8 antibody ABIN213445 at 5 ug/ml followed by biotinylated goat anti-rabbit IgG secondary antibody ABIN481713, alkaline phosphatase-streptavidin and chromogen.



Immunohistochemistry

Image 2. Anti-CCR8 antibody IHC of human tonsil. Immunohistochemistry of formalin-fixed, paraffin-embedded tissue after heat-induced antigen retrieval.