

Datasheet for ABIN213447
anti-PRLHR antibody (Extracellular Domain)

2 Images

[Go to Product page](#)

Overview

Quantity:	50 µg
Target:	PRLHR
Binding Specificity:	Extracellular Domain
Reactivity:	Human, Rat
Host:	Rabbit
Clonality:	Polyclonal
Conjugate:	This PRLHR antibody is un-conjugated
Application:	ELISA, Immunohistochemistry (Paraffin-embedded Sections) (IHC (p)), Immunohistochemistry (IHC)

Product Details

Brand:	IHC-plus™
Immunogen:	Synthetic 19 amino acid peptide from 2nd extracellular domain of human PRLHR / GPR10. Percent identity with other species by BLAST analysis: Human, Gorilla, Rat (100%), Monkey, Marmoset, Mouse, Dog, Panda (95%), Bovine, Pig (89%), Horse (84%). Type of Immunogen: Synthetic peptide
Specificity:	Human PRLHR / GPR10. BLAST analysis of the peptide immunogen showed no homology with other human proteins.
Predicted Reactivity:	Percent identity with other species by BLAST analysis: Human, Gorilla, Rat (100%) Monkey, Marmoset, Mouse, Dog, Panda (95%) Bovine, Pig (89%) Horse (84%).

Product Details

Purification: Immunoaffinity purified

Target Details

Target: PRLHR

Alternative Name: PRLHR / GPR10 ([PRLHR Products](#))

Background: Name/Gene ID: PRLHR

Subfamily: Releasing hormone

Family: GPCR

Synonyms: PRLHR, G protein-coupled receptor 10, G-protein coupled receptor 10, GPR10, GR3, HGR3, PrRP receptor, PrRPR, Uhr-1

Gene ID: 2834

Pathways: [Feeding Behaviour](#)

Application Details

Application Notes: Approved: ELISA, IHC, IHC-P (20 µg/mL)

Usage: Immunohistochemistry: This antibody was validated for use in immunohistochemistry on a panel of 21 formalin-fixed, paraffin-embedded (FFPE) human tissues after heat induced antigen retrieval in pH 6.0 citrate buffer. After incubation with the primary antibody, slides were incubated with biotinylated secondary antibody, followed by alkaline phosphatase-streptavidin and chromogen. The stained slides were evaluated by a pathologist to confirm staining specificity. The optimal working concentration for this antibody was determined to be 20 µg/mL.

Comment: Target Species of Antibody: Human

Restrictions: For Research Use only

Handling

Format: Liquid

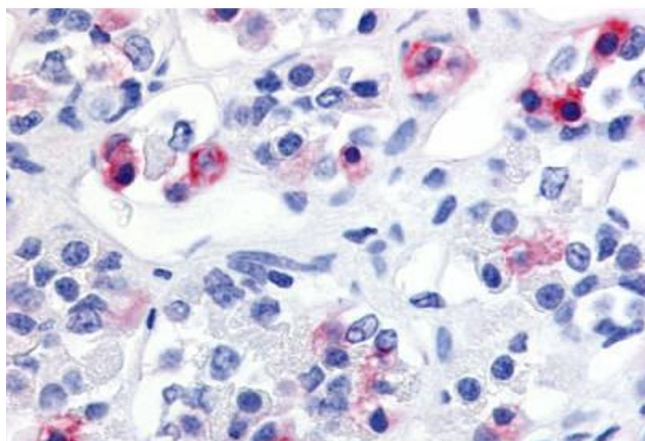
Concentration: Lot specific

Buffer: PBS, less than 0.1 % sodium azide.

Handling

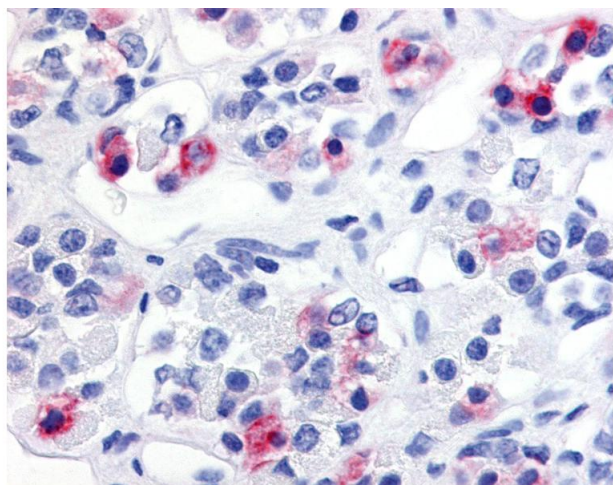
Preservative:	Sodium azide
Precaution of Use:	This product contains Sodium azide: a POISONOUS AND HAZARDOUS SUBSTANCE which should be handled by trained staff only.
Storage:	4 °C,-20 °C
Storage Comment:	Aliquot and store undiluted at -20°C or below for up to 1 year. Can be stored undiluted at 4°C for up to 1 month. Avoid freeze-thaw cycles.
Expiry Date:	12 months

Images



Immunohistochemistry (Paraffin-embedded Sections)

Image 1. Human Anterior Pituitary (formalin-fixed, paraffin-embedded) stained with PRLHR antibody ABIN213447 at 20 ug/ml followed by biotinylated goat anti-rabbit IgG secondary antibody ABIN481713, alkaline phosphatase-streptavidin and chromogen.



Immunohistochemistry

Image 2. Anti-PRLHR / GPR10 antibody IHC of human anterior pituitary. Immunohistochemistry of formalin-fixed, paraffin-embedded tissue after heat-induced antigen retrieval.