

Datasheet for ABIN213454

**anti-G Protein-Coupled Receptor 182 antibody (Extracellular Domain)**[Go to Product page](#)**2** Images

## Overview

Quantity:	50 µg
Target:	G Protein-Coupled Receptor 182 (GPR182)
Binding Specificity:	Extracellular Domain
Reactivity:	Human, Monkey
Host:	Rabbit
Clonality:	Polyclonal
Conjugate:	This G Protein-Coupled Receptor 182 antibody is un-conjugated
Application:	ELISA, Immunohistochemistry (Paraffin-embedded Sections) (IHC (p)), Immunohistochemistry (IHC)

## Product Details

Brand:	IHC-plus™
Immunogen:	Synthetic 18 amino acid peptide from 2nd extracellular domain of human GPR182 / ADMR. Percent identity with other species by BLAST analysis: Human, Gorilla, Gibbon, Monkey (100%), Elephant (94%), Marmoset, Bat, Panda, Rabbit, Horse (89%), Mouse, Rat, Hamster, Pig (83%).  Type of Immunogen: Synthetic peptide
Specificity:	Human GPR182 / ADMR. BLAST analysis of the peptide immunogen showed no homology with other human proteins.
Predicted Reactivity:	Percent identity with other species by BLAST analysis: Human, Gorilla, Gibbon, Monkey (100%) Elephant (94%) Marmoset, Bat, Panda, Rabbit, Horse (89%) Mouse, Rat, Hamster, Pig (83%).

## Product Details

Purification: Immunoaffinity purified

## Target Details

Target: G Protein-Coupled Receptor 182 (GPR182)

Alternative Name: GPR182 / ADMR ([GPR182 Products](#))

Background: Name/Gene ID: GPR182

Subfamily: Orphan-A

Family: GPCR

Synonyms: GPR182, 7TMR, Adrenomedullin L1 receptor, AM-R, AMR, ADMR, Adrenomedullin receptor, G protein-coupled receptor 182, HrhAMR, G-protein coupled receptor 182, Gamrh, HAMR, RAMR, G10D

Gene ID: 11318

## Application Details

Application Notes: Approved: ELISA, IHC, IHC-P (20 µg/mL)

Usage: Immunohistochemistry: This antibody was validated for use in immunohistochemistry on a panel of 21 formalin-fixed, paraffin-embedded (FFPE) human tissues after heat induced antigen retrieval in pH 6.0 citrate buffer. After incubation with the primary antibody, slides were incubated with biotinylated secondary antibody, followed by alkaline phosphatase-streptavidin and chromogen. The stained slides were evaluated by a pathologist to confirm staining specificity. The optimal working concentration for this antibody was determined to be 20-40 µg/mL.

Comment: Target Species of Antibody: Human

Restrictions: For Research Use only

## Handling

Format: Liquid

Concentration: Lot specific

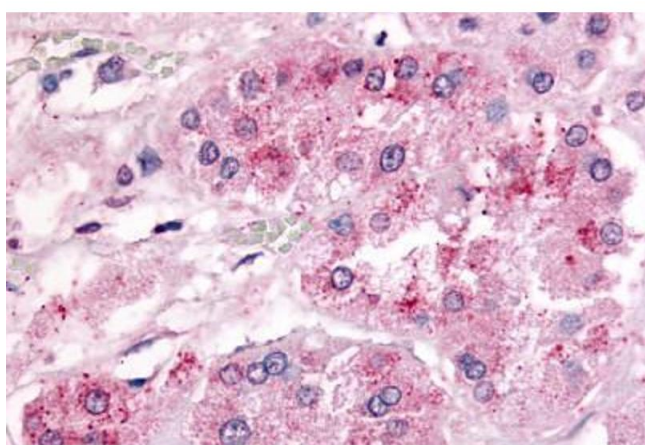
Buffer: PBS, less than 0.1 % sodium azide.

Preservative: Sodium azide

## Handling

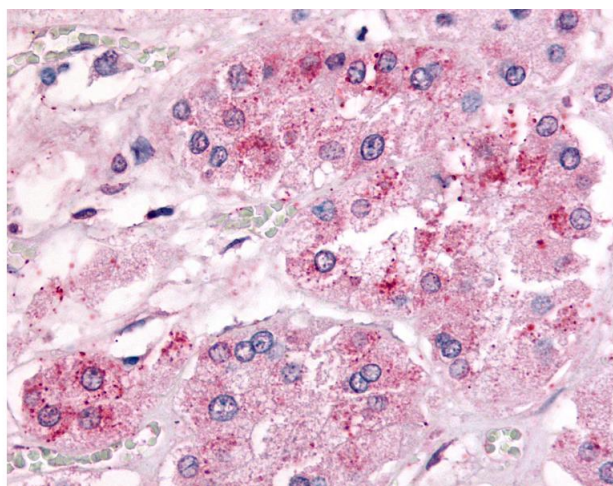
Precaution of Use:	This product contains Sodium azide: a POISONOUS AND HAZARDOUS SUBSTANCE which should be handled by trained staff only.
Storage:	4 °C, -20 °C
Storage Comment:	Aliquot and store undiluted at -20°C or below for up to 1 year. Can be stored undiluted at 4°C for up to 1 month. Avoid freeze-thaw cycles.
Expiry Date:	12 months

## Images



### Immunohistochemistry (Paraffin-embedded Sections)

**Image 1.** Human Adrenal (formalin-fixed, paraffin-embedded) stained with GPR182 antibody ABIN213454 at 20-40 ug/ml followed by biotinylated goat anti-rabbit IgG secondary antibody ABIN481713, alkaline phosphatase-streptavidin and chromogen.



### Immunohistochemistry

**Image 2.** Anti-GPR182 / ADMR antibody IHC of human adrenal. Immunohistochemistry of formalin-fixed, paraffin-embedded tissue after heat-induced antigen retrieval.