

Datasheet for ABIN213456
anti-GPR68 antibody (Extracellular Domain)

2 Images

[Go to Product page](#)

Overview

Quantity:	50 µg
Target:	GPR68
Binding Specificity:	Extracellular Domain
Reactivity:	Human, Rat, Monkey
Host:	Rabbit
Clonality:	Polyclonal
Conjugate:	This GPR68 antibody is un-conjugated
Application:	ELISA, Immunohistochemistry (IHC), Immunohistochemistry (Paraffin-embedded Sections) (IHC (p))

Product Details

Brand:	IHC-plus™
Immunogen:	Synthetic 18 amino acid peptide from 1st extracellular domain of human GPR68. Percent identity with other species by BLAST analysis: Human, Gorilla, Gibbon, Monkey, Marmoset, Rat (100%), Mouse, Bat, Dog, Hamster, Panda, Horse, Pig (94%), Bovine, Rabbit, Platypus (89%), Elephant (83%). Type of Immunogen: Synthetic peptide
Specificity:	Human GPR68. BLAST analysis of the peptide immunogen showed no homology with other human proteins, except GPR4 (50 %).
Predicted Reactivity:	Percent identity with other species by BLAST analysis: Human, Gorilla, Gibbon, Monkey,

Product Details

Marmoset, Rat (100%) Mouse, Bat, Dog, Hamster, Panda, Horse, Pig (94%) Bovine, Rabbit, Platypus (89%) Elephant (83%).

Purification: Immunoaffinity purified

Target Details

Target: GPR68

Alternative Name: GPR68 / OGR1 ([GPR68 Products](#))

Background: Name/Gene ID: GPR68
Subfamily: Lysophospholipid/Lysosphingolipid
Family: GPCR

Synonyms: GPR68, Brgrb, G protein-coupled receptor 68, G-protein coupled receptor 68, OGR1, Brgr1, GPR12A, OGR-1

Gene ID: 8111

Application Details

Application Notes: Approved: ELISA, IHC, IHC-P (10 - 20 µg/mL)

Usage: Immunohistochemistry: This antibody was validated for use in immunohistochemistry on a panel of 21 formalin-fixed, paraffin-embedded (FFPE) human tissues after heat induced antigen retrieval in pH 6.0 citrate buffer. After incubation with the primary antibody, slides were incubated with biotinylated secondary antibody, followed by alkaline phosphatase-streptavidin and chromogen. The stained slides were evaluated by a pathologist to confirm staining specificity. The optimal working concentration for this antibody was determined to be 10-20 µg/mL.

Comment: Target Species of Antibody: Human

Restrictions: For Research Use only

Handling

Format: Liquid

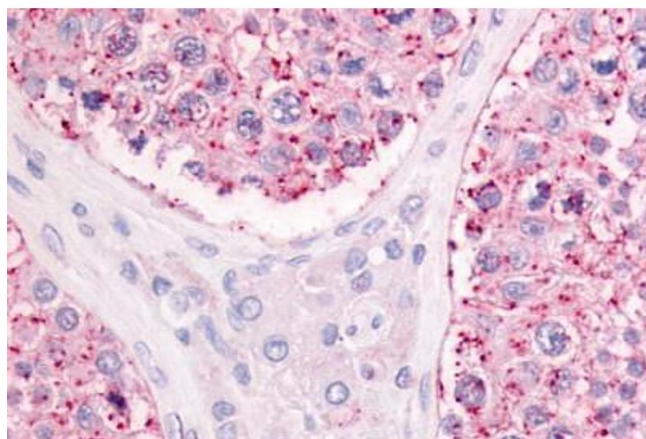
Concentration: Lot specific

Buffer: PBS, less than 0.1 % sodium azide.

Handling

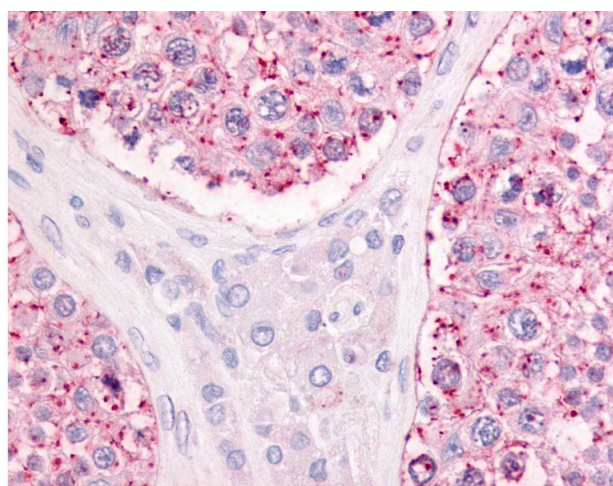
Preservative:	Sodium azide
Precaution of Use:	This product contains Sodium azide: a POISONOUS AND HAZARDOUS SUBSTANCE which should be handled by trained staff only.
Storage:	4 °C,-20 °C
Storage Comment:	Aliquot and store undiluted at -20°C or below for up to 1 year. Can be stored undiluted at 4°C for up to 1 month. Avoid freeze-thaw cycles.
Expiry Date:	12 months

Images



Immunohistochemistry (Paraffin-embedded Sections)

Image 1. Human Testis (formalin-fixed, paraffin-embedded) stained with GPR68 antibody ABIN213456 at 10-20 ug/ml followed by biotinylated goat anti-rabbit IgG secondary antibody ABIN481713, alkaline phosphatase-streptavidin and chromogen.



Immunohistochemistry

Image 2. Anti-GPR68 antibody IHC of human testis. Immunohistochemistry of formalin-fixed, paraffin-embedded tissue after heat-induced antigen retrieval.