

Datasheet for ABIN213469  
**anti-PTGER2 antibody (Extracellular Domain)**



[Go to Product page](#)

2 Images

Overview

Quantity:	50 µg
Target:	PTGER2
Binding Specificity:	Extracellular Domain
Reactivity:	Human, Mouse, Cow, Bat, Pig
Host:	Rabbit
Clonality:	Polyclonal
Conjugate:	This PTGER2 antibody is un-conjugated
Application:	ELISA, Immunohistochemistry (IHC), Immunohistochemistry (Paraffin-embedded Sections) (IHC (p))

Product Details

Brand:	IHC-plus™
Immunogen:	Synthetic 14 amino acid peptide from 3rd extracellular domain of human EP2. Percent identity with other species by BLAST analysis: Human, Gorilla, Gibbon, Monkey, Mouse, Bovine, Bat, Panda, Pig (100%), Marmoset, Rat, Dog, Elephant (93%), Turkey, Chicken, Platypus (86%).  Type of Immunogen: Synthetic peptide
Specificity:	Human EP2. BLAST analysis of the peptide immunogen showed no homology with other human proteins.
Predicted Reactivity:	Percent identity with other species by BLAST analysis: Human, Gorilla, Gibbon, Monkey, Mouse, Bovine, Bat, Panda, Pig (100%) Marmoset, Rat, Dog, Elephant (93%) Turkey, Chicken, Platypus

## Product Details

---

(86%).

Purification: Immunoaffinity purified

## Target Details

---

Target: PTGER2

Alternative Name: PTGER2 / EP2 ([PTGER2 Products](#))

Background: Name/Gene ID: PTGER2

Subfamily: Prostanoid

Family: GPCR

Synonyms: PTGER2, EP2 prostaglandin e2 receptor, EP2 prostaglandin receptor, EP2, Pge2-r ep2, PGE2 receptor EP2 subtype, Prostaglandin E receptor 2, Prostanoid EP2 receptor, EP2 receptor, PGE receptor EP2 subtype

Gene ID: 5732

## Application Details

---

Application Notes: Approved: ELISA, IHC, IHC-P (40 µg/mL)

Usage: Immunohistochemistry: This antibody was validated for use in immunohistochemistry on a panel of 21 formalin-fixed, paraffin-embedded (FFPE) human tissues after heat induced antigen retrieval in pH 6.0 citrate buffer. After incubation with the primary antibody, slides were incubated with biotinylated secondary antibody, followed by alkaline phosphatase-streptavidin and chromogen. The stained slides were evaluated by a pathologist to confirm staining specificity. The optimal working concentration for this antibody was determined to be 20-40 µg/mL.

Comment: Target Species of Antibody: Human

Restrictions: For Research Use only

## Handling

---

Format: Liquid

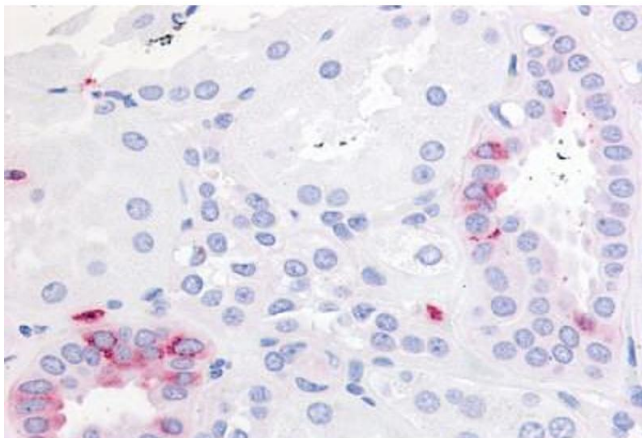
Concentration: Lot specific

Buffer: PBS, less than 0.1 % sodium azide.

## Handling

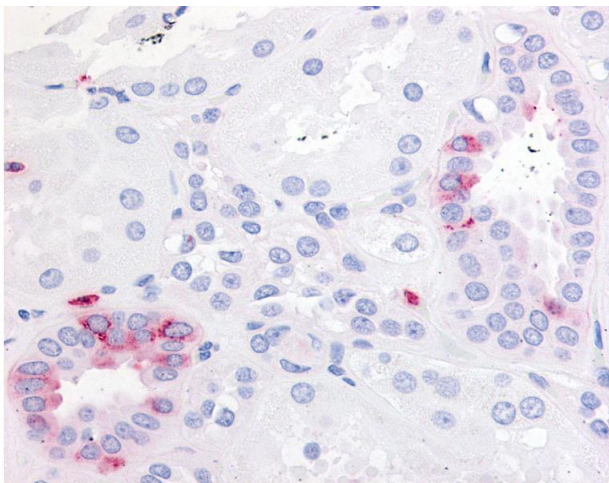
Preservative:	Sodium azide
Precaution of Use:	This product contains Sodium azide: a POISONOUS AND HAZARDOUS SUBSTANCE which should be handled by trained staff only.
Storage:	4 °C,-20 °C
Storage Comment:	Aliquot and store undiluted at -20°C or below for up to 1 year. Can be stored undiluted at 4°C for up to 1 month. Avoid freeze-thaw cycles.
Expiry Date:	12 months

## Images



### Immunohistochemistry (Paraffin-embedded Sections)

**Image 1.** Human Kidney (formalin-fixed, paraffin-embedded) stained with PTGER2 antibody ABIN213469 at 20-40 ug/ml followed by biotinylated goat anti-rabbit IgG secondary antibody ABIN481713, alkaline phosphatase-streptavidin and chromogen.



### Immunohistochemistry

**Image 2.** Anti-EP2 antibody IHC of human kidney. Immunohistochemistry of formalin-fixed, paraffin-embedded tissue after heat-induced antigen retrieval.