



[Go to Product page](#)

Datasheet for ABIN213470

anti-PTGER2 antibody (Cytoplasmic Domain)

2 Images

Overview

Quantity:	50 µg
Target:	PTGER2
Binding Specificity:	Cytoplasmic Domain
Reactivity:	Human, Monkey
Host:	Rabbit
Clonality:	Polyclonal
Conjugate:	This PTGER2 antibody is un-conjugated
Application:	ELISA, Immunohistochemistry (IHC), Immunohistochemistry (Paraffin-embedded Sections) (IHC (p))

Product Details

Brand:	IHC-plus™
Immunogen:	Synthetic 16 amino acid peptide from 2nd cytoplasmic domain of human EP2. Percent identity with other species by BLAST analysis: Human, Gorilla, Gibbon, Monkey, Marmoset (100%), Elephant (94%), Rat, Sheep, Bovine, Horse (88%), Dog, Hamster, Panda (81%). Type of Immunogen: Synthetic peptide
Specificity:	Human EP2. BLAST analysis of the peptide immunogen showed no homology with other human proteins, except PTGER4 (50 %).
Predicted Reactivity:	Percent identity with other species by BLAST analysis: Human, Gorilla, Gibbon, Monkey, Marmoset (100%) Elephant (94%) Rat, Sheep, Bovine, Horse (88%) Dog, Hamster, Panda (81%).

Product Details

Purification: Immunoaffinity purified

Target Details

Target: PTGER2

Alternative Name: PTGER2 / EP2 ([PTGER2 Products](#))

Background: Name/Gene ID: PTGER2

Subfamily: Prostanoid

Family: GPCR

Synonyms: PTGER2, EP2 prostaglandin e2 receptor, EP2 prostaglandin receptor, EP2, Pge2-r ep2, PGE2 receptor EP2 subtype, Prostaglandin E receptor 2, Prostanoid EP2 receptor, EP2 receptor, PGE receptor EP2 subtype

Gene ID: 5732

Application Details

Application Notes: Approved: ELISA, IHC, IHC-P (10 - 20 µg/mL)

Usage: Immunohistochemistry: This antibody was validated for use in immunohistochemistry on a panel of 21 formalin-fixed, paraffin-embedded (FFPE) human tissues after heat induced antigen retrieval in pH 6.0 citrate buffer. After incubation with the primary antibody, slides were incubated with biotinylated secondary antibody, followed by alkaline phosphatase-streptavidin and chromogen. The stained slides were evaluated by a pathologist to confirm staining specificity. The optimal working concentration for this antibody was determined to be 20-40 µg/mL.

Comment: Target Species of Antibody: Human

Restrictions: For Research Use only

Handling

Format: Liquid

Concentration: Lot specific

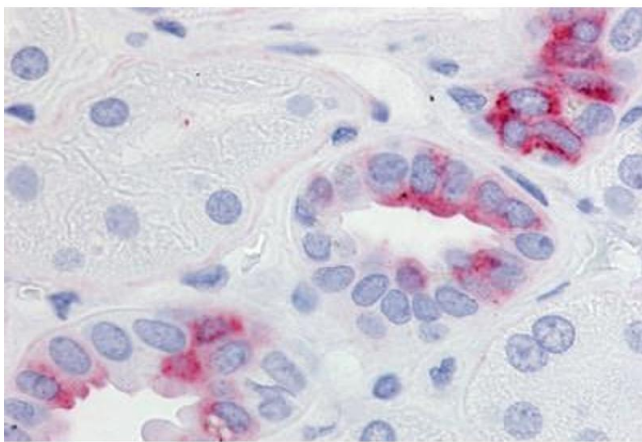
Buffer: PBS, less than 0.1 % sodium azide.

Preservative: Sodium azide

Handling

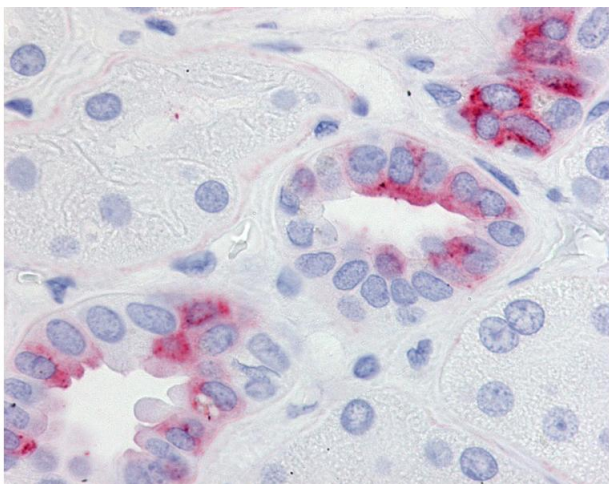
Precaution of Use:	This product contains Sodium azide: a POISONOUS AND HAZARDOUS SUBSTANCE which should be handled by trained staff only.
Storage:	4 °C,-20 °C
Storage Comment:	Aliquot and store undiluted at -20°C or below for up to 1 year. Can be stored undiluted at 4°C for up to 1 month. Avoid freeze-thaw cycles.
Expiry Date:	12 months

Images



Immunohistochemistry (Paraffin-embedded Sections)

Image 1. Human Kidney (formalin-fixed, paraffin-embedded) stained with PTGER2 antibody ABIN213470 at 20-40 ug/ml followed by biotinylated goat anti-rabbit IgG secondary antibody ABIN481713, alkaline phosphatase-streptavidin and chromogen.



Immunohistochemistry

Image 2. Anti-EP2 antibody IHC of human kidney. Immunohistochemistry of formalin-fixed, paraffin-embedded tissue after heat-induced antigen retrieval.