



[Go to Product page](#)

Datasheet for ABIN213472

anti-LPAR5 antibody (Extracellular Domain)

2 Images

Overview

Quantity:	50 µg
Target:	LPAR5
Binding Specificity:	Extracellular Domain
Reactivity:	Human
Host:	Rabbit
Clonality:	Polyclonal
Conjugate:	This LPAR5 antibody is un-conjugated
Application:	ELISA, Immunohistochemistry (IHC), Immunohistochemistry (Paraffin-embedded Sections) (IHC (p))

Product Details

Brand:	IHC-plus™
Immunogen:	Synthetic 17 amino acid peptide from 3rd extracellular domain of human LPAR5 / GPR92. Percent identity with other species by BLAST analysis: Human, Gorilla, Gibbon, Monkey (100%), Marmoset (94%). Type of Immunogen: Synthetic peptide
Specificity:	Human LPAR5 / GPR92. BLAST analysis of the peptide immunogen showed no homology with other human proteins.
Predicted Reactivity:	Percent identity with other species by BLAST analysis: Human, Gorilla, Gibbon, Monkey (100%) Marmoset (94%).

Product Details

Purification: Immunoaffinity purified

Target Details

Target: LPAR5

Alternative Name: LPAR5 / GPR92 ([LPAR5 Products](#))

Background: Name/Gene ID: LPAR5
Subfamily: Orphan-A
Family: GPCR

Synonyms: LPAR5, G-protein coupled receptor 92, GPR92, GPR93, LPA receptor 5, LPA-5, KPG_010, LPA5, G protein-coupled receptor 92, G-protein coupled receptor 93

Gene ID: 57121

Application Details

Application Notes: Approved: ELISA, IHC, IHC-P (10 µg/mL)

Usage: Immunohistochemistry: This antibody was validated for use in immunohistochemistry on a panel of 21 formalin-fixed, paraffin-embedded (FFPE) human tissues after heat induced antigen retrieval in pH 6.0 citrate buffer. After incubation with the primary antibody, slides were incubated with biotinylated secondary antibody, followed by alkaline phosphatase-streptavidin and chromogen. The stained slides were evaluated by a pathologist to confirm staining specificity. The optimal working concentration for this antibody was determined to be 10 µg/mL.

Comment: Target Species of Antibody: Human

Restrictions: For Research Use only

Handling

Format: Liquid

Concentration: Lot specific

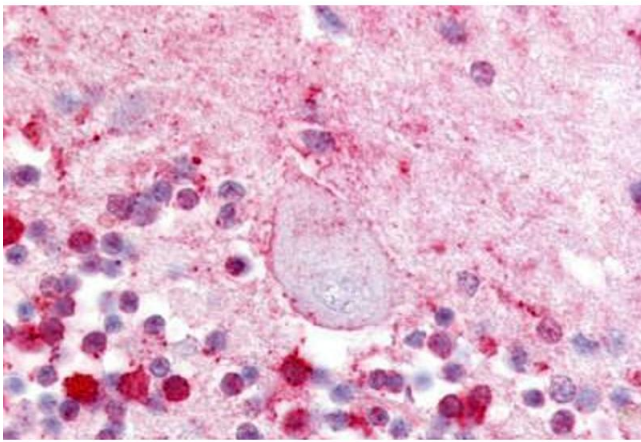
Buffer: PBS, less than 0.1 % sodium azide.

Preservative: Sodium azide

Handling

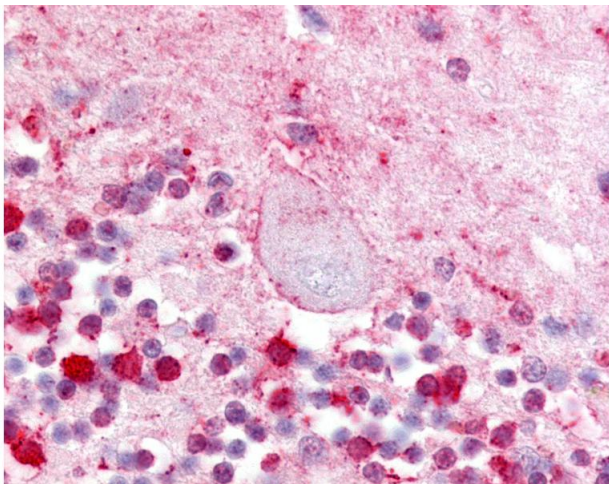
Precaution of Use:	This product contains Sodium azide: a POISONOUS AND HAZARDOUS SUBSTANCE which should be handled by trained staff only.
Storage:	4 °C,-20 °C
Storage Comment:	Aliquot and store undiluted at -20°C or below for up to 1 year. Can be stored undiluted at 4°C for up to 1 month. Avoid freeze-thaw cycles.
Expiry Date:	12 months

Images



Immunohistochemistry (Paraffin-embedded Sections)

Image 1. Human Brain, Cerebellum (formalin-fixed, paraffin-embedded) stained with LPAR5 antibody ABIN213472 at 10 ug/ml followed by biotinylated goat anti-rabbit IgG secondary antibody ABIN481713, alkaline phosphatase-streptavidin and chromogen.



Immunohistochemistry

Image 2. Anti-LPAR5 / GPR92 antibody IHC of human brain, cerebellum. Immunohistochemistry of formalin-fixed, paraffin-embedded tissue after heat-induced antigen retrieval.