

Datasheet for ABIN213490
anti-CCR4 antibody (Extracellular Domain)

2 Images

[Go to Product page](#)

Overview

Quantity:	50 µg
Target:	CCR4
Binding Specificity:	Extracellular Domain
Reactivity:	Human, Monkey
Host:	Rabbit
Clonality:	Polyclonal
Conjugate:	This CCR4 antibody is un-conjugated
Application:	ELISA, Immunohistochemistry (IHC), Immunohistochemistry (Paraffin-embedded Sections) (IHC (p))

Product Details

Brand:	IHC-plus™
Immunogen:	Synthetic 18 amino acid peptide from 2nd extracellular domain of human CCR4. Percent identity with other species by BLAST analysis: Human, Gorilla, Gibbon, Monkey, Marmoset (100%), Ferret, Elephant, Panda (94%), Dog, Bovine, Bat, Hamster (89%), Mouse, Rat (83%). Type of Immunogen: Synthetic peptide
Specificity:	Human CCR4. BLAST analysis of the peptide immunogen showed no homology with other human proteins.
Predicted Reactivity:	Percent identity with other species by BLAST analysis: Human, Gorilla, Gibbon, Monkey, Marmoset (100%) Ferret, Elephant, Panda (94%) Dog, Bovine, Bat, Hamster (89%) Mouse, Rat

Product Details

(83%).

Purification: Immunoaffinity purified

Target Details

Target: CCR4

Alternative Name: CCR4 ([CCR4 Products](#))

Background: Name/Gene ID: CCR4
Subfamily: Chemokine
Family: GPCR

Synonyms: CCR4, C-C chemokine receptor type 4, CD194, CD194 antigen, C-C CKR-4, Chemr13, CKR-4, CC chemokine receptor 4, CC-CKR-4, CCR-4, HGCN:14099, C-c chemokine receptor 4, Chemokine (C-C) receptor 4, CKR4, CMKBR4, K5-5

Gene ID: 1233

Application Details

Application Notes: Approved: ELISA, IHC, IHC-P (10 µg/mL)

Usage: Immunohistochemistry: This antibody was validated for use in immunohistochemistry on a panel of 21 formalin-fixed, paraffin-embedded (FFPE) human tissues after heat induced antigen retrieval in pH 6.0 citrate buffer. After incubation with the primary antibody, slides were incubated with biotinylated secondary antibody, followed by alkaline phosphatase-streptavidin and chromogen. The stained slides were evaluated by a pathologist to confirm staining specificity. The optimal working concentration for this antibody was determined to be 10 µg/mL.

Comment: Target Species of Antibody: Human

Restrictions: For Research Use only

Handling

Format: Liquid

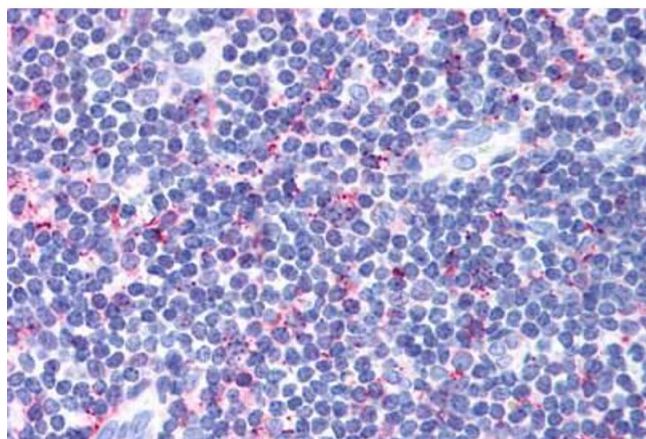
Concentration: Lot specific

Buffer: PBS, less than 0.1 % sodium azide.

Handling

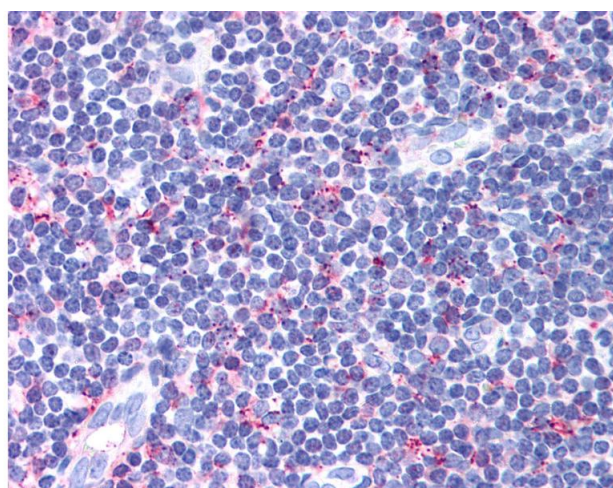
Preservative:	Sodium azide
Precaution of Use:	This product contains Sodium azide: a POISONOUS AND HAZARDOUS SUBSTANCE which should be handled by trained staff only.
Storage:	4 °C,-20 °C
Storage Comment:	Aliquot and store undiluted at -20°C or below for up to 1 year. Can be stored undiluted at 4°C for up to 1 month. Avoid freeze-thaw cycles.
Expiry Date:	12 months

Images



Immunohistochemistry (Paraffin-embedded Sections)

Image 1. Human Tonsil (formalin-fixed, paraffin-embedded) stained with CCR4 antibody ABIN213490 at 10 ug/ml followed by biotinylated goat anti-rabbit IgG secondary antibody ABIN481713, alkaline phosphatase-streptavidin and chromogen.



Immunohistochemistry

Image 2. Anti-CCR4 antibody IHC of human tonsil. Immunohistochemistry of formalin-fixed, paraffin-embedded tissue after heat-induced antigen retrieval.