

Datasheet for ABIN213492

**anti-Metabotropic Glutamate Receptor 6 antibody (N-Term)**[Go to Product page](#)**2** Images

## Overview

Quantity:	50 µg
Target:	Metabotropic Glutamate Receptor 6 (GRM6)
Binding Specificity:	N-Term
Reactivity:	Human, Monkey
Host:	Rabbit
Clonality:	Polyclonal
Conjugate:	This Metabotropic Glutamate Receptor 6 antibody is un-conjugated
Application:	Immunohistochemistry (IHC), Immunohistochemistry (Paraffin-embedded Sections) (IHC (p))

## Product Details

Brand:	IHC-plus™
Immunogen:	Synthetic 12 amino acid peptide from N-terminal extracellular domain of human GRM6 / MGLUR6. Percent identity with other species by BLAST analysis: Human, Chimpanzee, Gorilla, Gibbon, Marmoset (100%), Rat, Dog, Panda, Rabbit (83%).  Type of Immunogen: Synthetic peptide
Specificity:	Human GRM6 / MGLUR6. BLAST analysis of the peptide immunogen showed no homology with other human proteins.
Predicted Reactivity:	Percent identity with other species by BLAST analysis: Human, Chimpanzee, Gorilla, Gibbon, Marmoset (100%) Rat, Dog, Panda, Rabbit (83%).
Purification:	Immunoaffinity purified

## Target Details

---

Target:	Metabotropic Glutamate Receptor 6 (GRM6)
Alternative Name:	GRM6 / MGLUR6 ( <a href="#">GRM6 Products</a> )
Background:	Name/Gene ID: GRM6 Subfamily: Metabotropic glutamate Family: GPCR  Synonyms: GRM6, CSNB1B, GPRC1F, MGLu6, MGLUR6
Gene ID:	2916

## Application Details

---

Application Notes:	Approved: IHC, IHC-P (5.6 µg/mL)  Usage: Immunohistochemistry: This antibody was validated for use in immunohistochemistry on a panel of 21 formalin-fixed, paraffin-embedded (FFPE) human tissues after heat induced antigen retrieval in pH 6.0 citrate buffer. After incubation with the primary antibody, slides were incubated with biotinylated secondary antibody, followed by alkaline phosphatase-streptavidin and chromogen. The stained slides were evaluated by a pathologist to confirm staining specificity. The optimal working concentration for this antibody was determined to be 5.6 µg/mL.
Comment:	Target Species of Antibody: Human
Restrictions:	For Research Use only

## Handling

---

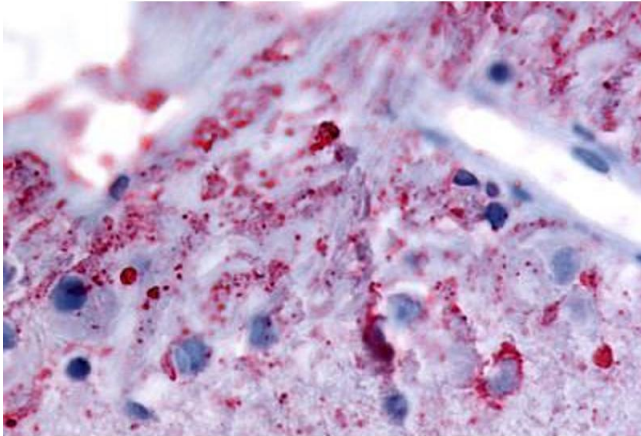
Format:	Liquid
Concentration:	Lot specific
Buffer:	PBS, less than 0.1 % sodium azide.
Preservative:	Sodium azide
Precaution of Use:	This product contains Sodium azide: a POISONOUS AND HAZARDOUS SUBSTANCE which should be handled by trained staff only.
Storage:	4 °C,-20 °C
Storage Comment:	Aliquot and store undiluted at -20°C or below for up to 1 year. Can be stored undiluted at 4°C for

## Handling

up to 1 month. Avoid freeze-thaw cycles.

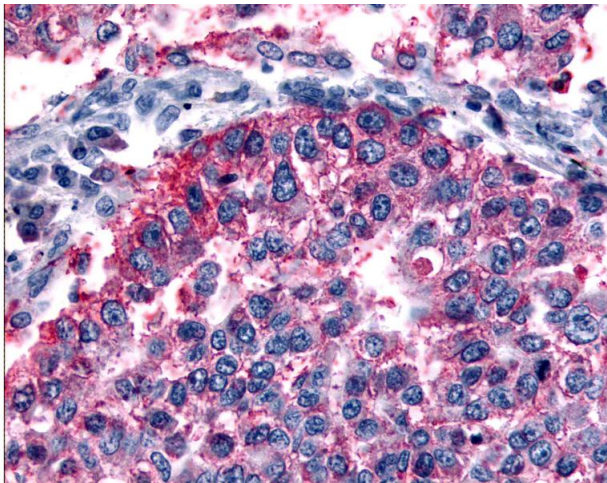
Expiry Date: 12 months

## Images



### Immunohistochemistry (Paraffin-embedded Sections)

**Image 1.** Human Eye, Ganglion Cells (formalin-fixed, paraffin-embedded) stained with GRM6 antibody ABIN213492 at 5.6 ug/ml followed by biotinylated goat anti-rabbit IgG secondary antibody ABIN481713, alkaline phosphatase-streptavidin and chromogen.



### Immunohistochemistry

**Image 2.** Anti-GRM6 / MGLUR6 antibody IHC of human Lung, Non-Small Cell Carcinoma. Immunohistochemistry of formalin-fixed, paraffin-embedded tissue after heat-induced antigen retrieval.