

## Datasheet for ABIN213500 anti-GPR160 antibody (Cytoplasmic Domain)

[Go to Product page](#)

### 1 Image

#### Overview

Quantity:	50 µg
Target:	GPR160
Binding Specificity:	Cytoplasmic Domain
Reactivity:	Human
Host:	Rabbit
Clonality:	Polyclonal
Conjugate:	This GPR160 antibody is un-conjugated
Application:	ELISA, Immunohistochemistry (IHC), Immunohistochemistry (Paraffin-embedded Sections) (IHC (p))

#### Product Details

Brand:	IHC-plus™
Immunogen:	Synthetic 20 amino acid peptide from 3rd cytoplasmic domain of human GPR160. Percent identity with other species by BLAST analysis: Human, Gorilla, Gibbon (100%), Monkey (95%), Marmoset (85%), Rabbit (80%).  Type of Immunogen: Synthetic peptide
Specificity:	Human GPR160. BLAST analysis of the peptide immunogen showed no homology with other human proteins.
Predicted Reactivity:	Percent identity with other species by BLAST analysis: Human, Gorilla, Gibbon (100%) Monkey (95%) Marmoset (85%) Rabbit (80%).

## Product Details

Purification: Immunoaffinity purified

## Target Details

Target: GPR160

Alternative Name: GPR160 ([GPR160 Products](#))

Background: Name/Gene ID: GPR160

Subfamily: Orphan-A

Family: GPCR

Synonyms: GPR160, HGPCR1, G protein-coupled receptor 160, GPCR1, GPCR150

Gene ID: 26996

## Application Details

Application Notes: Approved: ELISA, IHC, IHC-P (10 µg/mL)

Usage: Immunohistochemistry: This antibody was validated for use in immunohistochemistry on a panel of 21 formalin-fixed, paraffin-embedded (FFPE) human tissues after heat induced antigen retrieval in pH 6.0 citrate buffer. After incubation with the primary antibody, slides were incubated with biotinylated secondary antibody, followed by alkaline phosphatase-streptavidin and chromogen. The stained slides were evaluated by a pathologist to confirm staining specificity. The optimal working concentration for this antibody was determined to be 10 µg/mL.

Comment: Target Species of Antibody: Human

Restrictions: For Research Use only

## Handling

Format: Liquid

Concentration: Lot specific

Buffer: PBS, less than 0.1 % sodium azide.

Preservative: Sodium azide

Precaution of Use: This product contains Sodium azide: a POISONOUS AND HAZARDOUS SUBSTANCE which

## Handling

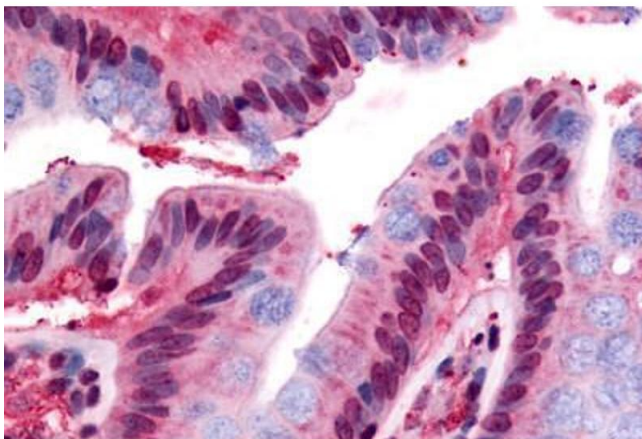
should be handled by trained staff only.

Storage: 4 °C, -20 °C

Storage Comment: Aliquot and store undiluted at -20°C or below for up to 1 year. Can be stored undiluted at 4°C for up to 1 month. Avoid freeze-thaw cycles.

Expiry Date: 12 months

## Images



### Immunohistochemistry

**Image 1.** Human Colon, Epithelium (formalin-fixed, paraffin-embedded) stained with GPR160 antibody ABIN213500 at 10 ug/ml followed by biotinylated goat anti-rabbit IgG secondary antibody ABIN481713, alkaline phosphatase-streptavidin and chromogen.