

Datasheet for ABIN213503
anti-ESRRG antibody (N-Term)

2 Images

[Go to Product page](#)

Overview

Quantity:	50 µg
Target:	ESRRG
Binding Specificity:	N-Term
Reactivity:	Human, Mouse, Rat, Dog, Cow, Horse, Rabbit, Monkey, Bat, Hamster
Host:	Rabbit
Clonality:	Polyclonal
Conjugate:	This ESRRG antibody is un-conjugated
Application:	ELISA, Immunohistochemistry (IHC), Immunohistochemistry (Paraffin-embedded Sections) (IHC (p))

Product Details

Brand:	IHC-plus™
Immunogen:	Synthetic 15 amino acid peptide from N-terminus of human ESRRG / ERR3. Percent identity with other species by BLAST analysis: Human, Gorilla, Orangutan, Gibbon, Monkey, Marmoset, Mouse, Rat, Bovine, Dog, Bat, Hamster, Elephant, Panda, Horse, Rabbit (100%), Opossum, Turkey, Chicken, Platypus, Lizard, Xenopus (87%). Type of Immunogen: Synthetic peptide
Specificity:	Human ESRRG / ERR3. BLAST analysis of the peptide immunogen showed no homology with other human proteins.
Predicted Reactivity:	Percent identity with other species by BLAST analysis: Human, Gorilla, Orangutan, Gibbon,

Product Details

Monkey, Marmoset, Mouse, Rat, Bovine, Dog, Bat, Hamster, Elephant, Panda, Horse, Rabbit (100%) Opossum, Turkey, Chicken, Platypus, Lizard, Xenopus (87%).

Purification: Immunoaffinity purified

Target Details

Target: ESRRG

Alternative Name: ESRRG / ERR gamma ([ESRRG Products](#))

Background: Name/Gene ID: ESRRG
Subfamily: NR3 Steroid receptor
Family: NHR

Synonyms: ESRRG, ERR Gamma, ERR gamma-2, ERR3, Err-gamma, NR3B3, ERRG2, ERRgamma, KIAA0832

Gene ID: 2104

Pathways: [Nuclear Receptor Transcription Pathway](#), [Retinoic Acid Receptor Signaling Pathway](#), [Steroid Hormone Mediated Signaling Pathway](#)

Application Details

Application Notes: Approved: ELISA, IHC, IHC-P (10 µg/mL)

Usage: Immunohistochemistry: This antibody was validated for use in immunohistochemistry on a panel of 21 formalin-fixed, paraffin-embedded (FFPE) human tissues after heat induced antigen retrieval in pH 6.0 citrate buffer. After incubation with the primary antibody, slides were incubated with biotinylated secondary antibody, followed by alkaline phosphatase-streptavidin and chromogen. The stained slides were evaluated by a pathologist to confirm staining specificity. The optimal working concentration for this antibody was determined to be 10 µg/mL.

Comment: Target Species of Antibody: Human

Restrictions: For Research Use only

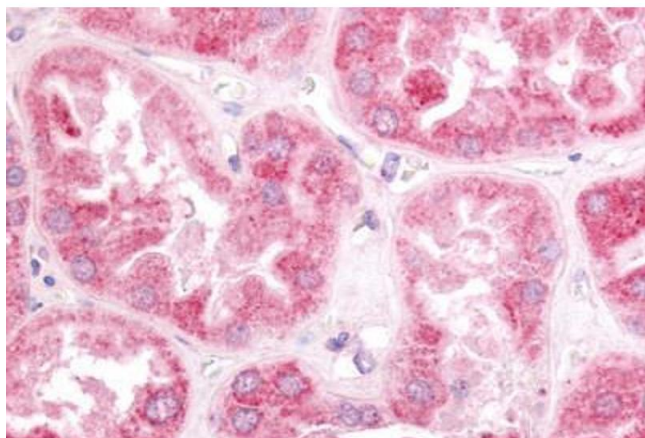
Handling

Format: Liquid

Handling

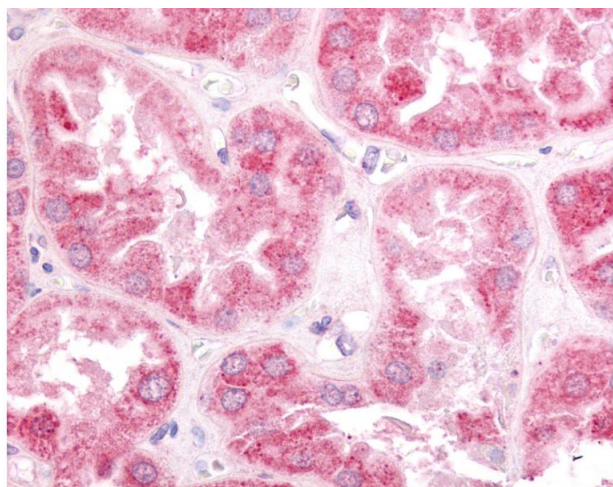
Concentration:	Lot specific
Buffer:	PBS, less than 0.1 % sodium azide.
Preservative:	Sodium azide
Precaution of Use:	This product contains Sodium azide: a POISONOUS AND HAZARDOUS SUBSTANCE which should be handled by trained staff only.
Storage:	4 °C, -20 °C
Storage Comment:	Aliquot and store undiluted at -20°C or below for up to 1 year. Can be stored undiluted at 4°C for up to 1 month. Avoid freeze-thaw cycles.
Expiry Date:	12 months

Images



Immunohistochemistry (Paraffin-embedded Sections)

Image 1. Human Kidney (formalin-fixed, paraffin-embedded) stained with ESRRG antibody ABIN213503 at 10 ug/ml followed by biotinylated goat anti-rabbit IgG secondary antibody ABIN481713, alkaline phosphatase-streptavidin and chromogen.



Immunohistochemistry

Image 2. Anti-ESRRG / ERR3 antibody IHC of human kidney. Immunohistochemistry of formalin-fixed, paraffin-embedded tissue after heat-induced antigen retrieval.