

Datasheet for ABIN213508 anti-GPR88 antibody (Cytoplasmic Domain)

2 Images

[Go to Product page](#)

Overview

Quantity:	50 µg
Target:	GPR88
Binding Specificity:	Cytoplasmic Domain
Reactivity:	Human, Rat, Mouse, Cow, Rabbit, Monkey, Hamster
Host:	Rabbit
Clonality:	Polyclonal
Conjugate:	This GPR88 antibody is un-conjugated
Application:	ELISA, Immunohistochemistry (Paraffin-embedded Sections) (IHC (p)), Immunohistochemistry (IHC)

Product Details

Brand:	IHC-plus™
Immunogen:	Synthetic 18 amino acid peptide from 1st cytoplasmic domain of human GPR88. Percent identity with other species by BLAST analysis: Human, Gorilla, Monkey, Mouse, Rat, Bovine, Hamster, Panda, Rabbit, Opossum (100%), Turkey, Chicken (89%), Lizard, Xenopus (83%). Type of Immunogen: Synthetic peptide
Specificity:	Human GPR88. BLAST analysis of the peptide immunogen showed no homology with other human proteins.
Predicted Reactivity:	Percent identity with other species by BLAST analysis: Human, Gorilla, Monkey, Mouse, Rat, Bovine, Hamster, Panda, Rabbit, Opossum (100%) Turkey, Chicken (89%) Lizard, Xenopus

Product Details

(83%).

Purification: Immunoaffinity purified

Target Details

Target: GPR88

Alternative Name: GPR88 ([GPR88 Products](#))

Background: Name/Gene ID: GPR88

Subfamily: Orphan-A

Family: GPCR

Synonyms: GPR88, G-protein coupled receptor 88, G protein-coupled receptor 88, STRG, G protein coupled receptor 88

Gene ID: 54112

Application Details

Application Notes: Approved: ELISA, IHC, IHC-P (10 - 20 µg/mL)

Usage: Immunohistochemistry: This antibody was validated for use in immunohistochemistry on a panel of 21 formalin-fixed, paraffin-embedded (FFPE) human tissues after heat induced antigen retrieval in pH 6.0 citrate buffer. After incubation with the primary antibody, slides were incubated with biotinylated secondary antibody, followed by alkaline phosphatase-streptavidin and chromogen. The stained slides were evaluated by a pathologist to confirm staining specificity. The optimal working concentration for this antibody was determined to be 5 µg/mL.

Comment: Target Species of Antibody: Human

Restrictions: For Research Use only

Handling

Format: Liquid

Concentration: Lot specific

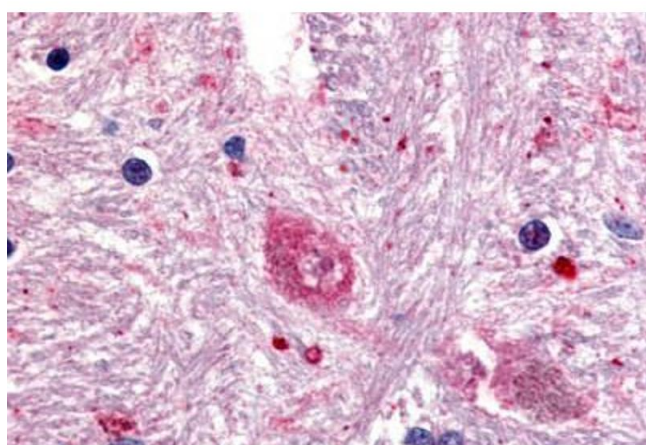
Buffer: PBS, less than 0.1 % sodium azide.

Preservative: Sodium azide

Handling

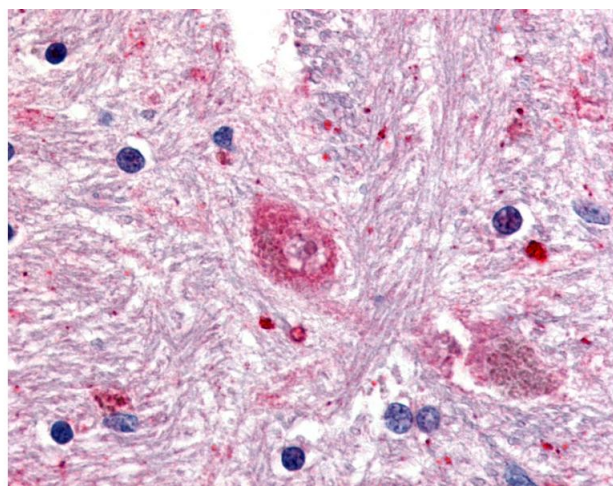
Precaution of Use:	This product contains Sodium azide: a POISONOUS AND HAZARDOUS SUBSTANCE which should be handled by trained staff only.
Storage:	4 °C, -20 °C
Storage Comment:	Aliquot and store undiluted at -20°C or below for up to 1 year. Can be stored undiluted at 4°C for up to 1 month. Avoid freeze-thaw cycles.
Expiry Date:	12 months

Images



Immunohistochemistry

Image 1. Human Brain, Caudate (formalin-fixed, paraffin-embedded) stained with GPR88 antibody ABIN213508 at 5 ug/ml followed by biotinylated goat anti-rabbit IgG secondary antibody ABIN481713, alkaline phosphatase-streptavidin and chromogen.



Immunohistochemistry

Image 2. Anti-GPR88 antibody IHC of human brain, caudate. Immunohistochemistry of formalin-fixed, paraffin-embedded tissue after heat-induced antigen retrieval.