

Datasheet for ABIN213513  
**anti-CRHR1 antibody (N-Term)**

## 2 Images

[Go to Product page](#)

## Overview

Quantity:	50 µg
Target:	CRHR1
Binding Specificity:	N-Term
Reactivity:	Human, Mouse, Rat, Dog, Horse, Monkey, Hamster
Host:	Rabbit
Clonality:	Polyclonal
Conjugate:	This CRHR1 antibody is un-conjugated
Application:	Immunohistochemistry (IHC), Immunohistochemistry (Paraffin-embedded Sections) (IHC (p))

## Product Details

Brand:	IHC-plus™
Immunogen:	Synthetic 15 amino acid peptide from N-terminal extracellular domain of human CRF1. Percent identity with other species by BLAST analysis: Human, Gorilla, Gibbon, Monkey, Marmoset, Mouse, Rat, Dog, Hamster, Panda, Horse (100%), Bat, Bovine, Pig, Opossum (93%), Elephant (87%), Sheep, Lizard (80%).  Type of Immunogen: Synthetic peptide
Specificity:	Human CRF1. BLAST analysis of the peptide immunogen showed no homology with other human proteins, except CRHR2 (73 %).
Predicted Reactivity:	Percent identity with other species by BLAST analysis: Human, Gorilla, Gibbon, Monkey, Marmoset, Mouse, Rat, Dog, Hamster, Panda, Horse (100%) Bat, Bovine, Pig, Opossum (93%)

## Product Details

Elephant (87%) Sheep, Lizard (80%).

Purification: Immunoaffinity purified

## Target Details

Target: CRHR1

Alternative Name: CRFR1 / CRHR1 ([CRHR1 Products](#))

Background: Name/Gene ID: CRHR1  
Subfamily: Corticotropin releasing factor  
Family: GPCR  
  
Synonyms: CRHR1, CRF-R-1, CRFR, CRHR1f, Crf receptor 1, CRH-R1, CRF-R, CRF1, CRFR-1, Crf receptor type 1, Crf receptor type 1, Crf type 1, CRF-R1, Crf1 receptor, CRFR1, CRH-R-1, CRH-R1h, CRHR, CRHR1L

Gene ID: 1394

Pathways: [Hormone Transport](#), [cAMP Metabolic Process](#), [Myometrial Relaxation and Contraction](#), [Regulation of Leukocyte Mediated Immunity](#), [Positive Regulation of Immune Effector Process](#), [Feeding Behaviour](#), [Negative Regulation of Transporter Activity](#)

## Application Details

Application Notes: Approved: IHC, IHC-P (15 - 20 µg/mL)

Usage: Immunohistochemistry: This antibody was validated for use in immunohistochemistry on a panel of 21 formalin-fixed, paraffin-embedded (FFPE) human tissues after heat induced antigen retrieval in pH 6.0 citrate buffer. After incubation with the primary antibody, slides were incubated with biotinylated secondary antibody, followed by alkaline phosphatase-streptavidin and chromogen. The stained slides were evaluated by a pathologist to confirm staining specificity. The optimal working concentration for this antibody was determined to be 10 µg/mL.

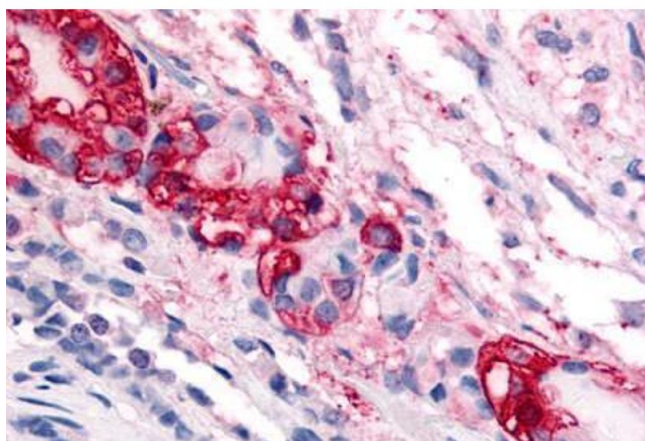
Comment: Target Species of Antibody: Human

Restrictions: For Research Use only

## Handling

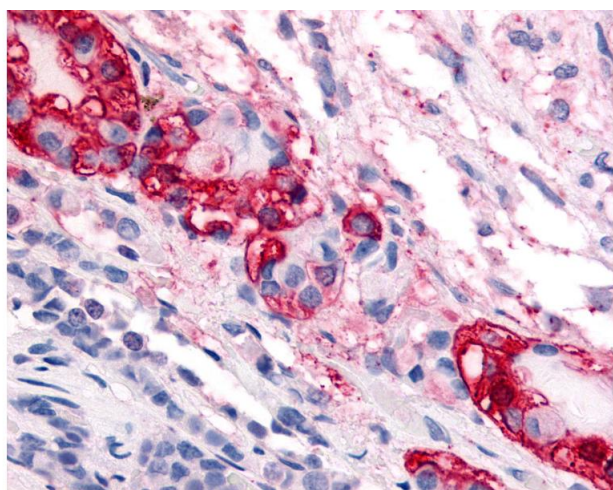
Format:	Liquid
Concentration:	Lot specific
Buffer:	PBS, less than 0.1 % sodium azide.
Preservative:	Sodium azide
Precaution of Use:	This product contains Sodium azide: a POISONOUS AND HAZARDOUS SUBSTANCE which should be handled by trained staff only.
Storage:	4 °C,-20 °C
Storage Comment:	Aliquot and store undiluted at -20°C or below for up to 1 year. Can be stored undiluted at 4°C for up to 1 month. Avoid freeze-thaw cycles.
Expiry Date:	12 months

## Images



### Immunohistochemistry (Paraffin-embedded Sections)

**Image 1.** Human Pars Intermedia (formalin-fixed, paraffin-embedded) stained with CRHR1 antibody ABIN213513 at 20 ug/ml followed by biotinylated goat anti-rabbit IgG secondary antibody ABIN481713, alkaline phosphatase-streptavidin and chromogen.



### Immunohistochemistry

**Image 2.** Anti-CRF1 antibody IHC of human pars intermedia. Immunohistochemistry of formalin-fixed, paraffin-embedded tissue after heat-induced antigen retrieval.