

Datasheet for ABIN213521
anti-GPR61 antibody (Cytoplasmic Domain)

2 Images

[Go to Product page](#)

Overview

Quantity:	50 µg
Target:	GPR61
Binding Specificity:	Cytoplasmic Domain
Reactivity:	Human, Mouse, Monkey, Pig, Bat, Cow, Horse, Rat
Host:	Rabbit
Clonality:	Polyclonal
Conjugate:	This GPR61 antibody is un-conjugated
Application:	Immunohistochemistry (Paraffin-embedded Sections) (IHC (p)), ELISA, Immunohistochemistry (IHC)

Product Details

Brand:	IHC-plus™
Immunogen:	Synthetic 18 amino acid peptide from 2nd cytoplasmic domain of human GPR61. Percent identity with other species by BLAST analysis: Human, Gorilla, Gibbon, Monkey, Marmoset, Mouse, Rat, Bat, Bovine, Elephant, Panda, Horse, Pig, Opossum (100%), Hamster (94%), Lizard, Pufferfish, Zebrafish (89%), Xenopus (83%). Type of Immunogen: Synthetic peptide
Specificity:	Human GPR61. BLAST analysis of the peptide immunogen showed no homology with other human proteins.
Predicted Reactivity:	Percent identity with other species by BLAST analysis: Human, Gorilla, Gibbon, Monkey,

Product Details

Marmoset, Mouse, Rat, Bat, Bovine, Elephant, Panda, Horse, Pig, Opossum (100%) Hamster (94%) Lizard, Pufferfish, Zebrafish (89%) Xenopus (83%).

Purification: Immunoaffinity purified

Target Details

Target: GPR61

Alternative Name: GPR61 ([GPR61 Products](#))

Background: Name/Gene ID: GPR61
Subfamily: Orphan-A
Family: GPCR

Synonyms: GPR61, BALGR, GPCR3, G protein-coupled receptor 61

Gene ID: 83873

Application Details

Application Notes: Approved: ELISA, IHC, IHC-P (20 µg/mL)

Usage: Immunohistochemistry: This antibody was validated for use in immunohistochemistry on a panel of 21 formalin-fixed, paraffin-embedded (FFPE) human tissues after heat induced antigen retrieval in pH 6.0 citrate buffer. After incubation with the primary antibody, slides were incubated with biotinylated secondary antibody, followed by alkaline phosphatase-streptavidin and chromogen. The stained slides were evaluated by a pathologist to confirm staining specificity. The optimal working concentration for this antibody was determined to be 20 µg/mL.

Comment: Target Species of Antibody: Human

Restrictions: For Research Use only

Handling

Format: Liquid

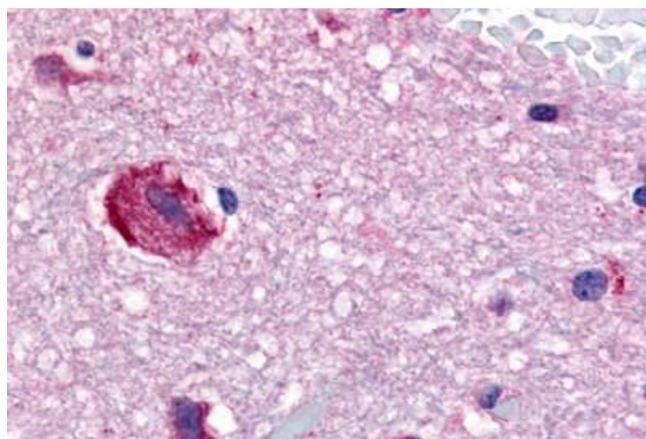
Concentration: Lot specific

Buffer: PBS, less than 0.1 % sodium azide.

Handling

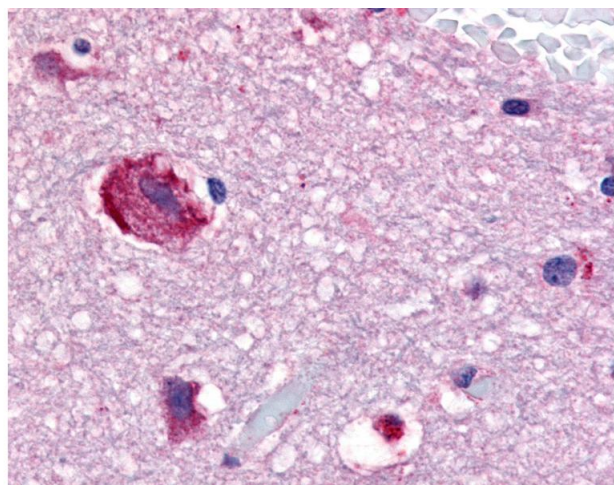
Preservative:	Sodium azide
Precaution of Use:	This product contains Sodium azide: a POISONOUS AND HAZARDOUS SUBSTANCE which should be handled by trained staff only.
Storage:	4 °C,-20 °C
Storage Comment:	Aliquot and store undiluted at -20°C or below for up to 1 year. Can be stored undiluted at 4°C for up to 1 month. Avoid freeze-thaw cycles.
Expiry Date:	12 months

Images



Immunohistochemistry (Paraffin-embedded Sections)

Image 1. Human Brain, Caudate (formalin-fixed, paraffin-embedded) stained with GPR61 antibody ABIN213521 at 20 ug/ml followed by biotinylated goat anti-rabbit IgG secondary antibody ABIN481713, alkaline phosphatase-streptavidin and chromogen.



Immunohistochemistry

Image 2. Anti-GPR61 antibody IHC of human brain, caudate. Immunohistochemistry of formalin-fixed, paraffin-embedded tissue after heat-induced antigen retrieval.