

Datasheet for ABIN213523

**anti-DUSP26 antibody (Internal Region)****2** Images[Go to Product page](#)

## Overview

Quantity:	50 µg
Target:	DUSP26
Binding Specificity:	Internal Region
Reactivity:	Human, Rat, Mouse, Hamster, Horse, Cow, Monkey, Rabbit
Host:	Rabbit
Clonality:	Polyclonal
Conjugate:	This DUSP26 antibody is un-conjugated
Application:	ELISA, Immunohistochemistry (IHC), Immunohistochemistry (Paraffin-embedded Sections) (IHC (p))

## Product Details

Brand:	IHC-plus™
Immunogen:	Synthetic 18 amino acid peptide from internal region of human DUSP26. Percent identity with other species by BLAST analysis: Human, Gorilla, Orangutan, Gibbon, Monkey, Marmoset, Mouse, Rat, Bovine, Hamster, Elephant, Panda, Horse, Rabbit, Opossum (100%), Bat, Pig (94%), Platypus (89%).  Type of Immunogen: Synthetic peptide
Specificity:	Human DUSP26. BLAST analysis of the peptide immunogen showed no homology with other human proteins, except DUSP27 (61 % ).
Predicted Reactivity:	Percent identity with other species by BLAST analysis: Human, Gorilla, Orangutan, Gibbon,

## Product Details

Monkey, Marmoset, Mouse, Rat, Bovine, Hamster, Elephant, Panda, Horse, Rabbit, Opossum (100%) Bat, Pig (94%) Platypus (89%).

Purification: Immunoaffinity purified

## Target Details

Target: DUSP26

Alternative Name: MKP-8 / DUSP26 ([DUSP26 Products](#))

Background: Name/Gene ID: DUSP26  
Subfamily: Dual Specificity MKP  
Family: Protein Phosphatase  
  
Synonyms: DUSP26, DSP-4, NATA1, SKRP3, MAP kinase phosphatase 8, MKP-8, DUSP24, LDP-4, LDP4, MKP8

Gene ID: 78986

## Application Details

Application Notes: Approved: ELISA, IHC, IHC-P (10 µg/mL)

Usage: Immunohistochemistry: This antibody was validated for use in immunohistochemistry on a panel of 21 formalin-fixed, paraffin-embedded (FFPE) human tissues after heat induced antigen retrieval in pH 6.0 citrate buffer. After incubation with the primary antibody, slides were incubated with biotinylated secondary antibody, followed by alkaline phosphatase-streptavidin and chromogen. The stained slides were evaluated by a pathologist to confirm staining specificity. The optimal working concentration for this antibody was determined to be 10 µg/mL.

Comment: Target Species of Antibody: Human

Restrictions: For Research Use only

## Handling

Format: Liquid

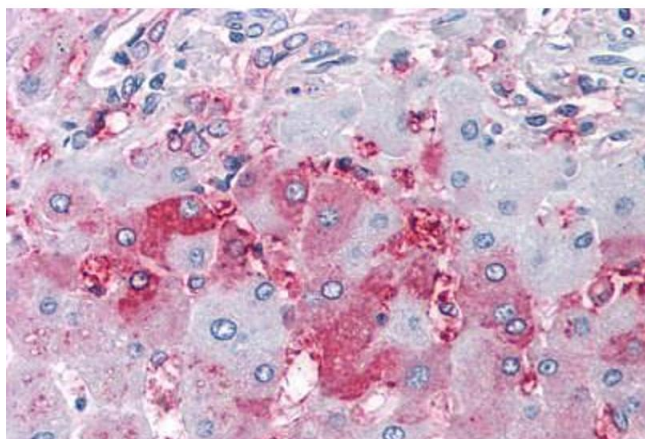
Concentration: Lot specific

Buffer: PBS, less than 0.1 % sodium azide.

## Handling

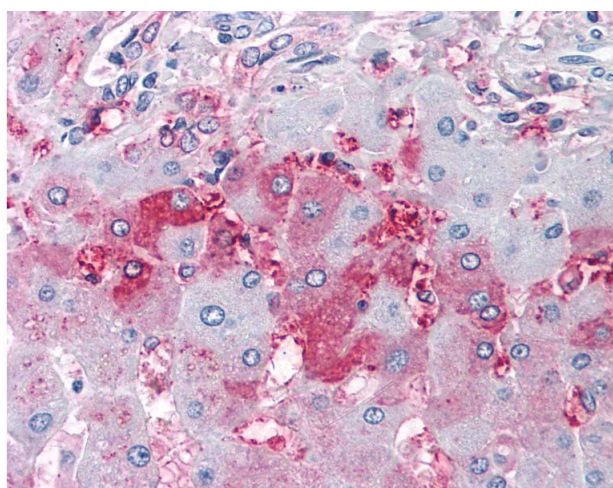
Preservative:	Sodium azide
Precaution of Use:	This product contains Sodium azide: a POISONOUS AND HAZARDOUS SUBSTANCE which should be handled by trained staff only.
Storage:	4 °C,-20 °C
Storage Comment:	Aliquot and store undiluted at -20°C or below for up to 1 year. Can be stored undiluted at 4°C for up to 1 month. Avoid freeze-thaw cycles.
Expiry Date:	12 months

## Images



### Immunohistochemistry (Paraffin-embedded Sections)

**Image 1.** Human Liver (formalin-fixed, paraffin-embedded) stained with DUSP26 antibody ABIN213523 at 10 ug/ml followed by biotinylated goat anti-rabbit IgG secondary antibody ABIN481713, alkaline phosphatase-streptavidin and chromogen.



### Immunohistochemistry

**Image 2.** Anti-DUSP26 antibody IHC of human liver. Immunohistochemistry of formalin-fixed, paraffin-embedded tissue after heat-induced antigen retrieval.