



Datasheet for ABIN213530
anti-PDE7A antibody (N-Term)



[Go to Product page](#)

2 Images

Overview

Quantity:	50 µg
Target:	PDE7A
Binding Specificity:	N-Term
Reactivity:	Human, Rabbit, Cow, Dog, Monkey, Bat, Xenopus laevis
Host:	Rabbit
Clonality:	Polyclonal
Conjugate:	This PDE7A antibody is un-conjugated
Application:	Immunohistochemistry (Paraffin-embedded Sections) (IHC (p)), Immunohistochemistry (IHC)

Product Details

Brand:	IHC-plus™
Immunogen:	Synthetic 17 amino acid peptide from N-terminus of human PDE7A. Percent identity with other species by BLAST analysis: Human, Gorilla, Orangutan, Gibbon, Monkey, Marmoset, Bovine, Dog, Bat, Elephant, Panda, Rabbit, Opossum, Xenopus (100%), Mouse, Rat, Hamster, Turkey, Lizard (94%), Zebrafish (82%). Type of Immunogen: Synthetic peptide
Specificity:	Human PDE7A. BLAST analysis of the peptide immunogen showed no homology with other human proteins.
Predicted Reactivity:	Percent identity with other species by BLAST analysis: Human, Gorilla, Orangutan, Gibbon, Monkey, Marmoset, Bovine, Dog, Bat, Elephant, Panda, Rabbit, Opossum, Xenopus (100%)

Product Details

Mouse, Rat, Hamster, Turkey, Lizard (94%) Zebrafish (82%).

Purification: Immunoaffinity purified

Target Details

Target: PDE7A

Alternative Name: PDE7A ([PDE7A Products](#))

Background: Name/Gene ID: PDE7A
Subfamily: PDE - cAMP-specific
Family: Phosphodiesterase

Synonyms: PDE7A, PDE7A1, PDE7A2, Phosphodiesterase 7A, Phosphodiesterase isozyme 7, PDE7, HCP1, TM22

Gene ID: 5150

Pathways: [cAMP Metabolic Process](#)

Application Details

Application Notes: Approved: IHC, IHC-P (20 µg/mL)

Usage: Immunohistochemistry: This antibody was validated for use in immunohistochemistry on a panel of 21 formalin-fixed, paraffin-embedded (FFPE) human tissues after heat induced antigen retrieval in pH 6.0 citrate buffer. After incubation with the primary antibody, slides were incubated with biotinylated secondary antibody, followed by alkaline phosphatase-streptavidin and chromogen. The stained slides were evaluated by a pathologist to confirm staining specificity. The optimal working concentration for this antibody was determined to be 20 µg/mL.

Comment: Target Species of Antibody: Human

Restrictions: For Research Use only

Handling

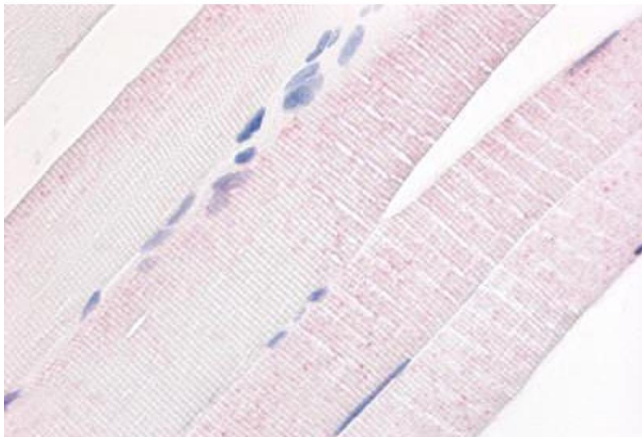
Format: Liquid

Concentration: Lot specific

Handling

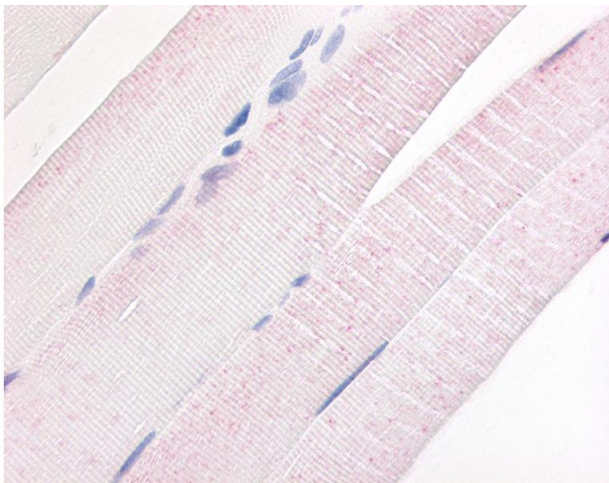
Buffer:	PBS, less than 0.1 % sodium azide.
Preservative:	Sodium azide
Precaution of Use:	This product contains Sodium azide: a POISONOUS AND HAZARDOUS SUBSTANCE which should be handled by trained staff only.
Storage:	4 °C,-20 °C
Storage Comment:	Aliquot and store undiluted at -20°C or below for up to 1 year. Can be stored undiluted at 4°C for up to 1 month. Avoid freeze-thaw cycles.
Expiry Date:	12 months

Images



Immunohistochemistry (Paraffin-embedded Sections)

Image 1. Human Skeletal Muscle (formalin-fixed, paraffin-embedded) stained with PDE7A antibody ABIN213530 at 20 ug/ml followed by biotinylated goat anti-rabbit IgG secondary antibody ABIN481713, alkaline phosphatase-streptavidin and chromogen.



Immunohistochemistry

Image 2. Anti-PDE7A antibody IHC of human skeletal muscle. Immunohistochemistry of formalin-fixed, paraffin-embedded tissue after heat-induced antigen retrieval.