

Datasheet for ABIN213531
anti-PDE7B antibody (N-Term)

2 Images

[Go to Product page](#)

Overview

Quantity:	50 µg
Target:	PDE7B
Binding Specificity:	N-Term
Reactivity:	Human
Host:	Rabbit
Clonality:	Polyclonal
Conjugate:	This PDE7B antibody is un-conjugated
Application:	Immunohistochemistry (Paraffin-embedded Sections) (IHC (p)), Immunohistochemistry (IHC)

Product Details

Brand:	IHC-plus™
Immunogen:	Synthetic 17 amino acid peptide from near N-terminus of human PDE7B. Percent identity with other species by BLAST analysis: Human (100%), Gibbon, Monkey (94%), Gorilla, Mouse, Rat, Elephant, Horse, Rabbit (88%), Opossum (82%). Type of Immunogen: Synthetic peptide
Specificity:	Human PDE7B. BLAST analysis of the peptide immunogen showed no homology with other human proteins.
Predicted Reactivity:	Percent identity with other species by BLAST analysis: Human (100%) Gibbon, Monkey (94%) Gorilla, Mouse, Rat, Elephant, Horse, Rabbit (88%) Opossum (82%).
Purification:	Immunoaffinity purified

Target Details

Target:	PDE7B
Alternative Name:	PDE7B (PDE7B Products)
Background:	Name/Gene ID: PDE7B Subfamily: PDE - cAMP-specific Family: Phosphodiesterase Synonyms: PDE7B, BA472E5.1, Phosphodiesterase 7B
Gene ID:	27115
Pathways:	cAMP Metabolic Process

Application Details

Application Notes:	Approved: IHC, IHC-P (10 µg/mL) Usage: Immunohistochemistry: This antibody was validated for use in immunohistochemistry on a panel of 21 formalin-fixed, paraffin-embedded (FFPE) human tissues after heat induced antigen retrieval in pH 6.0 citrate buffer. After incubation with the primary antibody, slides were incubated with biotinylated secondary antibody, followed by alkaline phosphatase-streptavidin and chromogen. The stained slides were evaluated by a pathologist to confirm staining specificity. The optimal working concentration for this antibody was determined to be 10 µg/mL.
Comment:	Target Species of Antibody: Human
Restrictions:	For Research Use only

Handling

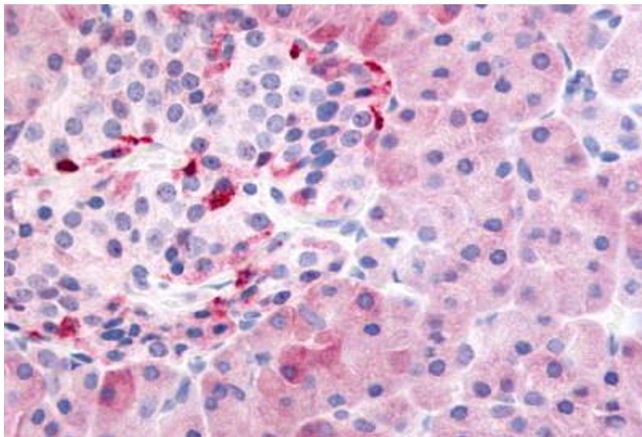
Format:	Liquid
Concentration:	Lot specific
Buffer:	PBS, less than 0.1 % sodium azide.
Preservative:	Sodium azide
Precaution of Use:	This product contains Sodium azide: a POISONOUS AND HAZARDOUS SUBSTANCE which should be handled by trained staff only.
Storage:	4 °C, -20 °C

Handling

Storage Comment: Aliquot and store undiluted at -20°C or below for up to 1 year. Can be stored undiluted at 4°C for up to 1 month. Avoid freeze-thaw cycles.

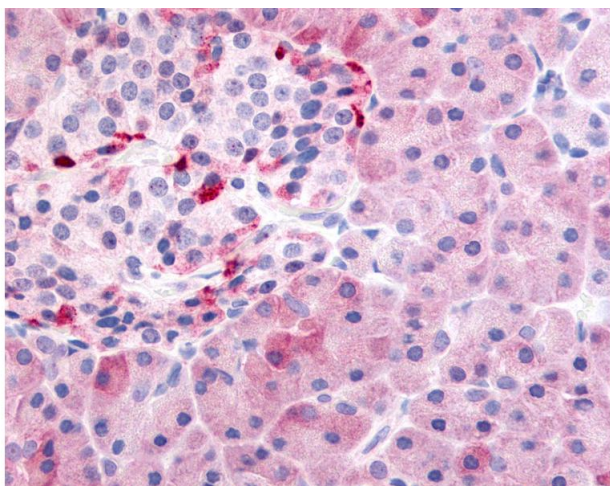
Expiry Date: 12 months

Images



Immunohistochemistry (Paraffin-embedded Sections)

Image 1. Human Pancreas (formalin-fixed, paraffin-embedded) stained with PDE7B antibody ABIN213531 at 10 ug/ml followed by biotinylated goat anti-rabbit IgG secondary antibody ABIN481713, alkaline phosphatase-streptavidin and chromogen.



Immunohistochemistry

Image 2. Anti-PDE7B antibody IHC of human pancreas. Immunohistochemistry of formalin-fixed, paraffin-embedded tissue after heat-induced antigen retrieval.