

Datasheet for ABIN213532
anti-PDE7B antibody (Internal Region)



[Go to Product page](#)

2 Images

Overview

| | |
|----------------------|---|
| Quantity: | 50 µg |
| Target: | PDE7B |
| Binding Specificity: | Internal Region |
| Reactivity: | Human, Monkey |
| Host: | Rabbit |
| Clonality: | Polyclonal |
| Conjugate: | This PDE7B antibody is un-conjugated |
| Application: | Immunohistochemistry (IHC), Immunohistochemistry (Paraffin-embedded Sections) (IHC (p)) |

Product Details

| | |
|-----------------------|---|
| Brand: | IHC-plus™ |
| Immunogen: | Synthetic 18 amino acid peptide from internal region of human PDE7B. Percent identity with other species by BLAST analysis: Human, Gorilla, Gibbon, Monkey, Marmoset (100%), Mouse, Rat, Bovine, Dog, Bat, Hamster, Elephant, Panda, Horse, Rabbit, Pig, Turkey, Chicken (94%), Platypus (89%). Type of Immunogen: Synthetic peptide |
| Specificity: | Human PDE7B. BLAST analysis of the peptide immunogen showed no homology with other human proteins. |
| Predicted Reactivity: | Percent identity with other species by BLAST analysis: Human, Gorilla, Gibbon, Monkey, Marmoset (100%) Mouse, Rat, Bovine, Dog, Bat, Hamster, Elephant, Panda, Horse, Rabbit, Pig, |

Product Details

Turkey, Chicken (94%) Platypus (89%).

Purification: Immunoaffinity purified

Target Details

Target: PDE7B

Alternative Name: PDE7B ([PDE7B Products](#))

Background: Name/Gene ID: PDE7B
Subfamily: PDE - cAMP-specific
Family: Phosphodiesterase

Synonyms: PDE7B, BA472E5.1, Phosphodiesterase 7B

Gene ID: 27115

Pathways: [cAMP Metabolic Process](#)

Application Details

Application Notes: Approved: IHC, IHC-P (1.25 - 2.5 µg/mL)

Usage: Immunohistochemistry: This antibody was validated for use in immunohistochemistry on a panel of 21 formalin-fixed, paraffin-embedded (FFPE) human tissues after heat induced antigen retrieval in pH 6.0 citrate buffer. After incubation with the primary antibody, slides were incubated with biotinylated secondary antibody, followed by alkaline phosphatase-streptavidin and chromogen. The stained slides were evaluated by a pathologist to confirm staining specificity. The optimal working concentration for this antibody was determined to be 1.25-2.5 µg/mL.

Comment: Target Species of Antibody: Human

Restrictions: For Research Use only

Handling

Format: Liquid

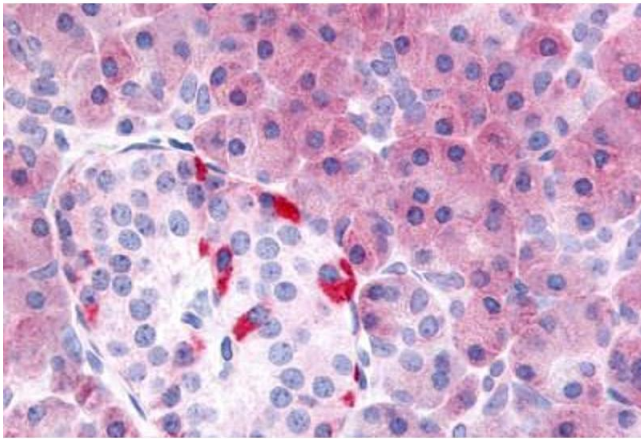
Concentration: Lot specific

Buffer: PBS, less than 0.1 % sodium azide.

Handling

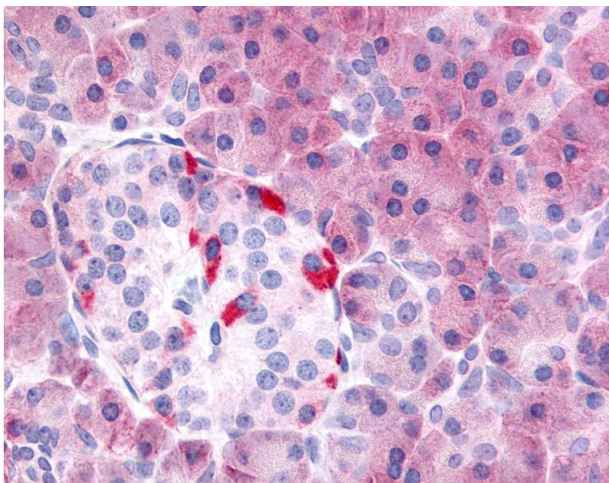
| | |
|--------------------|---|
| Preservative: | Sodium azide |
| Precaution of Use: | This product contains Sodium azide: a POISONOUS AND HAZARDOUS SUBSTANCE which should be handled by trained staff only. |
| Storage: | 4 °C,-20 °C |
| Storage Comment: | Aliquot and store undiluted at -20°C or below for up to 1 year. Can be stored undiluted at 4°C for up to 1 month. Avoid freeze-thaw cycles. |
| Expiry Date: | 12 months |

Images



Immunohistochemistry (Paraffin-embedded Sections)

Image 1. Human Pancreas (formalin-fixed, paraffin-embedded) stained with PDE7B antibody ABIN213532 at 1.25-2.5 ug/ml followed by biotinylated goat anti-rabbit IgG secondary antibody ABIN481713, alkaline phosphatase-streptavidin and chromogen.



Immunohistochemistry

Image 2. Anti-PDE7B antibody IHC of human pancreas. Immunohistochemistry of formalin-fixed, paraffin-embedded tissue after heat-induced antigen retrieval.