

Datasheet for ABIN213535  
**anti-PDE8B antibody (Internal Region)**[Go to Product page](#)

## 2 Images

## Overview

Quantity:	50 µg
Target:	PDE8B
Binding Specificity:	Internal Region
Reactivity:	Human, Horse, Monkey, Bat
Host:	Rabbit
Clonality:	Polyclonal
Conjugate:	This PDE8B antibody is un-conjugated
Application:	Immunohistochemistry (Paraffin-embedded Sections) (IHC (p)), Immunohistochemistry (IHC)

## Product Details

Brand:	IHC-plus™
Immunogen:	Synthetic 17 amino acid peptide from internal region of human PDE8B. Percent identity with other species by BLAST analysis: Human, Gorilla, Gibbon, Monkey, Marmoset, Bat, Elephant, Horse (100%), Pig, Opossum (94%), Mouse, Platypus (88%), Rat, Dog (82%).  Type of Immunogen: Synthetic peptide
Specificity:	Human PDE8B. BLAST analysis of the peptide immunogen showed no homology with other human proteins.
Predicted Reactivity:	Percent identity with other species by BLAST analysis: Human, Gorilla, Gibbon, Monkey, Marmoset, Bat, Elephant, Horse (100%) Pig, Opossum (94%) Mouse, Platypus (88%) Rat, Dog (82%).

## Product Details

Purification: Immunoaffinity purified

## Target Details

Target: PDE8B

Alternative Name: PDE8B ([PDE8B Products](#))

Background: Name/Gene ID: PDE8B  
Subfamily: PDE - cAMP-specific, high affinity  
Family: Phosphodiesterase  
  
Synonyms: PDE8B, ADSD, HsPDE8B, PPNAD3, Phosphodiesterase 8B

Gene ID: 8622

Pathways: [Negative Regulation of Hormone Secretion](#), [cAMP Metabolic Process](#)

## Application Details

Application Notes: Approved: IHC, IHC-P (10 µg/mL)

Usage: Immunohistochemistry: This antibody was validated for use in immunohistochemistry on a panel of 21 formalin-fixed, paraffin-embedded (FFPE) human tissues after heat induced antigen retrieval in pH 6.0 citrate buffer. After incubation with the primary antibody, slides were incubated with biotinylated secondary antibody, followed by alkaline phosphatase-streptavidin and chromogen. The stained slides were evaluated by a pathologist to confirm staining specificity. The optimal working concentration for this antibody was determined to be 10 µg/mL.

Comment: Target Species of Antibody: Human

Restrictions: For Research Use only

## Handling

Format: Liquid

Concentration: Lot specific

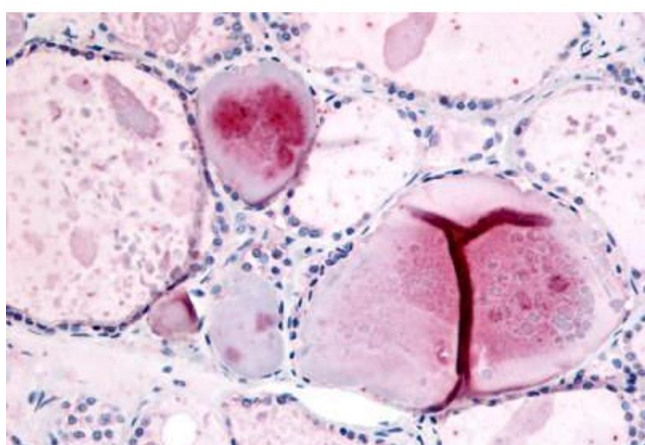
Buffer: PBS, less than 0.1 % sodium azide.

Preservative: Sodium azide

## Handling

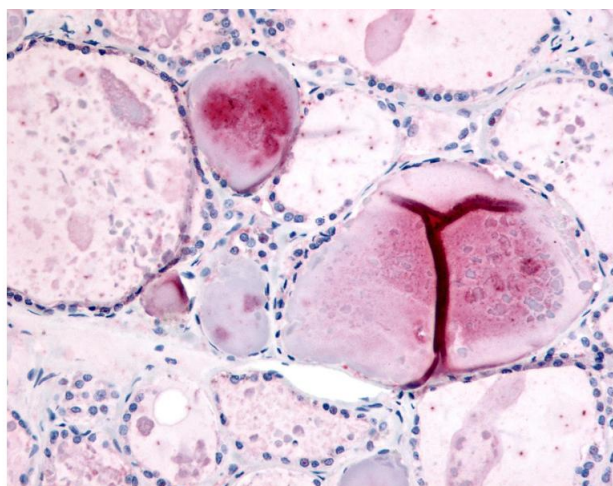
Precaution of Use:	This product contains Sodium azide: a POISONOUS AND HAZARDOUS SUBSTANCE which should be handled by trained staff only.
Storage:	4 °C, -20 °C
Storage Comment:	Aliquot and store undiluted at -20°C or below for up to 1 year. Can be stored undiluted at 4°C for up to 1 month. Avoid freeze-thaw cycles.
Expiry Date:	12 months

## Images



### Immunohistochemistry (Paraffin-embedded Sections)

**Image 1.** Human Thyroid (formalin-fixed, paraffin-embedded) stained with PDE8B antibody ABIN213535 at 10 ug/ml followed by biotinylated goat anti-rabbit IgG secondary antibody ABIN481713, alkaline phosphatase-streptavidin and chromogen.



### Immunohistochemistry

**Image 2.** Anti-PDE8B antibody IHC of human thyroid. Immunohistochemistry of formalin-fixed, paraffin-embedded tissue after heat-induced antigen retrieval.