

Datasheet for ABIN213546
anti-PDE2A antibody (N-Term)

2 Images

[Go to Product page](#)

Overview

Quantity:	50 µg
Target:	PDE2A
Binding Specificity:	N-Term
Reactivity:	Human, Dog, Horse
Host:	Rabbit
Clonality:	Polyclonal
Conjugate:	This PDE2A antibody is un-conjugated
Application:	Immunohistochemistry (IHC), Immunohistochemistry (Paraffin-embedded Sections) (IHC (p))

Product Details

Brand:	IHC-plus™
Immunogen:	Synthetic 17 amino acid peptide from N-terminus of human PDE2A. Percent identity with other species by BLAST analysis: Human, Gorilla, Marmoset, Dog, Panda, Horse (100%), Gibbon, Monkey, Mouse, Rat, Bovine, Elephant, Rabbit (94%), Pig (88%). Type of Immunogen: Synthetic peptide
Specificity:	Human PDE2A. BLAST analysis of the peptide immunogen showed no homology with other human proteins, except KCNH2 (59 %).
Predicted Reactivity:	Percent identity with other species by BLAST analysis: Human, Gorilla, Marmoset, Dog, Panda, Horse (100%) Gibbon, Monkey, Mouse, Rat, Bovine, Elephant, Rabbit (94%) Pig (88%).
Purification:	Immunoaffinity purified

Target Details

Target:	PDE2A
Alternative Name:	Pde2 / PDE2A (PDE2A Products)
Background:	Name/Gene ID: PDE2A Subfamily: PDE - cAMP/cGMP dual-specific, cGMP-stimulated Family: Phosphodiesterase Synonyms: PDE2A, CGMP-stimulated PDE, Cyclic GMP-stimulated PDE, PDE2, Pde2a2, PED2A4, Phosphodiesterase 2A, CGS-PDE, CGSPDE, PDE2A1, Pde2a3
Gene ID:	5138
Pathways:	cAMP Metabolic Process , Synaptic Membrane

Application Details

Application Notes:	Approved: IHC, IHC-P (20 µg/mL) Usage: Immunohistochemistry: This antibody was validated for use in immunohistochemistry on a panel of 21 formalin-fixed, paraffin-embedded (FFPE) human tissues after heat induced antigen retrieval in pH 6.0 citrate buffer. After incubation with the primary antibody, slides were incubated with biotinylated secondary antibody, followed by alkaline phosphatase-streptavidin and chromogen. The stained slides were evaluated by a pathologist to confirm staining specificity. The optimal working concentration for this antibody was determined to be 20 µg/mL.
Comment:	Target Species of Antibody: Human
Restrictions:	For Research Use only

Handling

Format:	Liquid
Concentration:	Lot specific
Buffer:	PBS, less than 0.1 % sodium azide.
Preservative:	Sodium azide
Precaution of Use:	This product contains Sodium azide: a POISONOUS AND HAZARDOUS SUBSTANCE which should be handled by trained staff only.

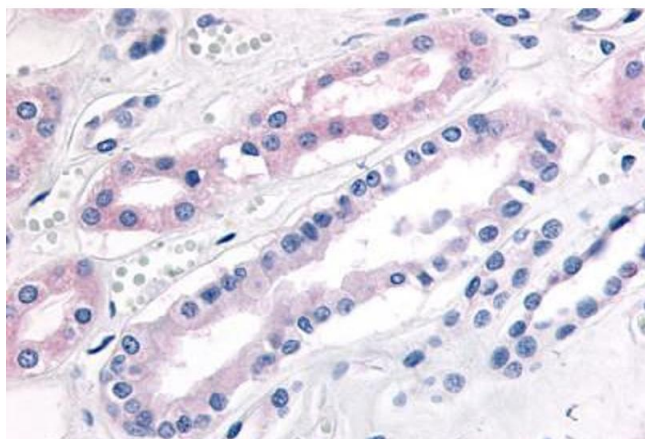
Handling

Storage: 4 °C, -20 °C

Storage Comment: Aliquot and store undiluted at -20°C or below for up to 1 year. Can be stored undiluted at 4°C for up to 1 month. Avoid freeze-thaw cycles.

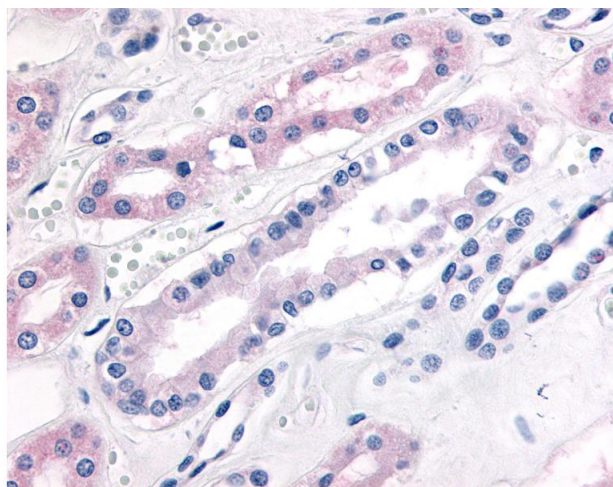
Expiry Date: 12 months

Images



Immunohistochemistry (Paraffin-embedded Sections)

Image 1. Human Kidney (formalin-fixed, paraffin-embedded) stained with PDE2A antibody ABIN213546 at 20 ug/ml followed by biotinylated goat anti-rabbit IgG secondary antibody ABIN481713, alkaline phosphatase-streptavidin and chromogen.



Immunohistochemistry

Image 2. Anti-PDE2A antibody IHC of human kidney. Immunohistochemistry of formalin-fixed, paraffin-embedded tissue after heat-induced antigen retrieval.