

Datasheet for ABIN213551  
**anti-MAP4K6 antibody (Internal Region)**

## 2 Images

[Go to Product page](#)

## Overview

|                      |   |
|----------------------|---|
| Quantity:            | 50 µg   |
| Target:              | MAP4K6 (MINK1)  |
| Binding Specificity: | Internal Region   |
| Reactivity:          | Human, Mouse, Rat, Pig, Horse, Bat, Monkey, Hamster   |
| Host:                | Rabbit  |
| Clonality:           | Polyclonal  |
| Conjugate:           | This MAP4K6 antibody is un-conjugated   |
| Application:         | ELISA, Immunohistochemistry (IHC), Immunohistochemistry (Paraffin-embedded Sections)<br>(IHC (p)) |

## Product Details

|                       |   |
|-----------------------|---|
| Brand:                | IHC-plus™   |
| Immunogen:            | Synthetic 18 amino acid peptide from internal region of human MINK1 / MAP4K6. Percent identity with other species by BLAST analysis: Human, Gorilla, Gibbon, Monkey, Marmoset, Mouse, Rat, Bat, Hamster, Elephant, Panda, Horse, Pig, Opossum (100%).<br><br>Type of Immunogen: Synthetic peptide |
| Specificity:          | Human MINK1 / MAP4K6. BLAST analysis of the peptide immunogen showed no homology with other human proteins.   |
| Predicted Reactivity: | Percent identity with other species by BLAST analysis: Human, Gorilla, Gibbon, Monkey, Marmoset, Mouse, Rat, Bat, Hamster, Elephant, Panda, Horse, Pig, Opossum (100%).   |

## Product Details

Purification: Immunoaffinity purified

## Target Details

Target: MAP4K6 (MINK1)

Alternative Name: MINK1 / MINK ([MINK1 Products](#))

Background: Name/Gene ID: MINK1

Subfamily: MSN

Family: Protein Kinase

Synonyms: MINK1, HMINKbeta, GCK family kinase MiNK, MAP4K6, Misshapen/NIK-related kinase, MinK, Mink 1, Misshapen/NIKs-related kinase, HMINK, MEKKK 6, Mink 2, B55, ZC3, MEK kinase kinase 6, Misshapen-like kinase 1, YSK2

Gene ID: 50488

Pathways: [Synaptic Membrane](#)

## Application Details

Application Notes: Approved: ELISA, IHC, IHC-P (5 µg/mL)

Usage: Immunohistochemistry: This antibody was validated for use in immunohistochemistry on a panel of 21 formalin-fixed, paraffin-embedded (FFPE) human tissues after heat induced antigen retrieval in pH 6.0 citrate buffer. After incubation with the primary antibody, slides were incubated with biotinylated secondary antibody, followed by alkaline phosphatase-streptavidin and chromogen. The stained slides were evaluated by a pathologist to confirm staining specificity. The optimal working concentration for this antibody was determined to be 5 µg/mL.

Comment: Target Species of Antibody: Human

Restrictions: For Research Use only

## Handling

Format: Liquid

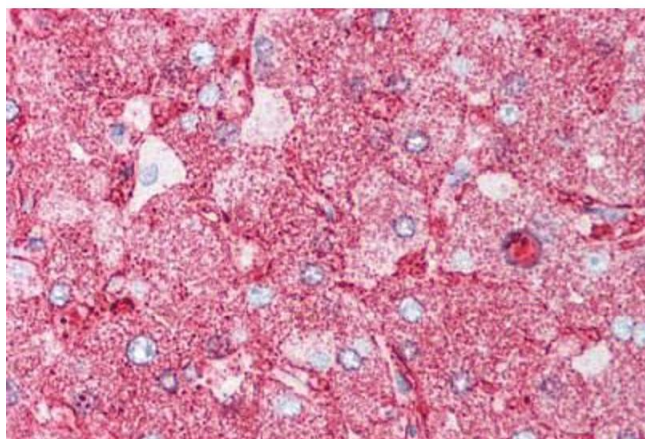
Concentration: Lot specific

Buffer: PBS, less than 0.1 % sodium azide.

## Handling

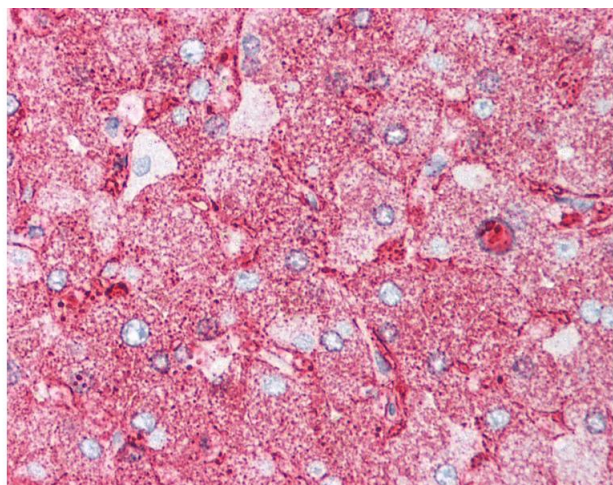
|                    |   |
|--------------------|---|
| Preservative:      | Sodium azide  |
| Precaution of Use: | This product contains Sodium azide: a POISONOUS AND HAZARDOUS SUBSTANCE which should be handled by trained staff only.                      |
| Storage:           | 4 °C,-20 °C   |
| Storage Comment:   | Aliquot and store undiluted at -20°C or below for up to 1 year. Can be stored undiluted at 4°C for up to 1 month. Avoid freeze-thaw cycles. |
| Expiry Date:       | 12 months   |

## Images



### Immunohistochemistry (Paraffin-embedded Sections)

**Image 1.** Human Liver (formalin-fixed, paraffin-embedded) stained with MINK1 antibody ABIN213551 at 5 ug/ml followed by biotinylated goat anti-rabbit IgG secondary antibody ABIN481713, alkaline phosphatase-streptavidin and chromogen.



### Immunohistochemistry

**Image 2.** Anti-MINK1 / MAP4K6 antibody IHC of human liver. Immunohistochemistry of formalin-fixed, paraffin-embedded tissue after heat-induced antigen retrieval.