

Datasheet for ABIN213553

anti-PDE11A antibody (Internal Region)



[Go to Product page](#)

2 Images

Overview

Quantity:	50 µg
Target:	PDE11A
Binding Specificity:	Internal Region
Reactivity:	Human, Mouse, Rat, Cow, Horse, Rabbit, Zebrafish (Danio rerio), Bat, Monkey, Pig, Chicken, Hamster
Host:	Rabbit
Clonality:	Polyclonal
Conjugate:	This PDE11A antibody is un-conjugated
Application:	Immunohistochemistry (IHC), Immunohistochemistry (Paraffin-embedded Sections) (IHC (p))

Product Details

Brand:	IHC-plus™
Immunogen:	Synthetic 17 amino acid peptide from internal region of human PDE11A. Percent identity with other species by BLAST analysis: Human, Gorilla, Gibbon, Monkey, Marmoset, Mouse, Rat, Bovine, Bat, Hamster, Elephant, Horse, Rabbit, Pig, Opossum, Turkey, Chicken, Pufferfish, Zebrafish (100%), Platypus, Xenopus, Stickleback (94%), Dog (88%). Type of Immunogen: Synthetic peptide
Specificity:	Human PDE11A. BLAST analysis of the peptide immunogen showed no homology with other human proteins, except PDE6B (53 %).
Predicted Reactivity:	Percent identity with other species by BLAST analysis: Human, Gorilla, Gibbon, Monkey,

Product Details

Marmoset, Mouse, Rat, Bovine, Bat, Hamster, Elephant, Horse, Rabbit, Pig, Opossum, Turkey, Chicken, Pufferfish, Zebrafish (100%) Platypus, Xenopus, Stickleback (94%) Dog (88%).

Purification: Immunoaffinity purified

Target Details

Target: PDE11A

Alternative Name: PDE11A ([PDE11A Products](#))

Background: Name/Gene ID: PDE11A
Subfamily: PDE - cAMP/cGMP dual-specific
Family: Phosphodiesterase

Synonyms: PDE11A, Pde11, PDE11A4, PDE11A1, PPNAD2, PDE11A2, PDE11A3,
Phosphodiesterase 11A

Gene ID: 50940

Pathways: [cAMP Metabolic Process](#)

Application Details

Application Notes: Approved: IHC, IHC-P (5 µg/mL)

Usage: Immunohistochemistry: This antibody was validated for use in immunohistochemistry on a panel of 21 formalin-fixed, paraffin-embedded (FFPE) human tissues after heat induced antigen retrieval in pH 6.0 citrate buffer. After incubation with the primary antibody, slides were incubated with biotinylated secondary antibody, followed by alkaline phosphatase-streptavidin and chromogen. The stained slides were evaluated by a pathologist to confirm staining specificity. The optimal working concentration for this antibody was determined to be 5 µg/mL.

Comment: Target Species of Antibody: Human

Restrictions: For Research Use only

Handling

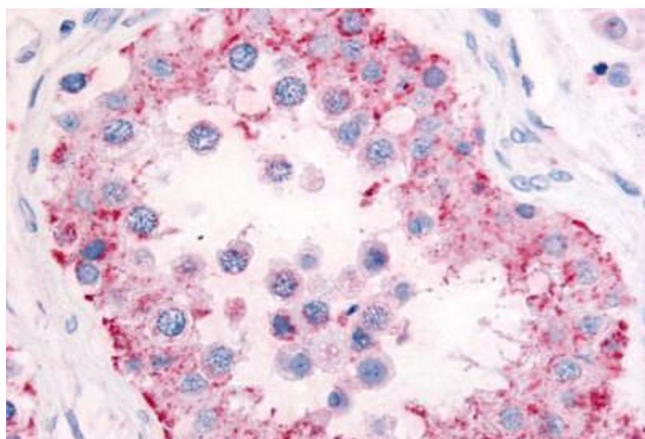
Format: Liquid

Concentration: Lot specific

Handling

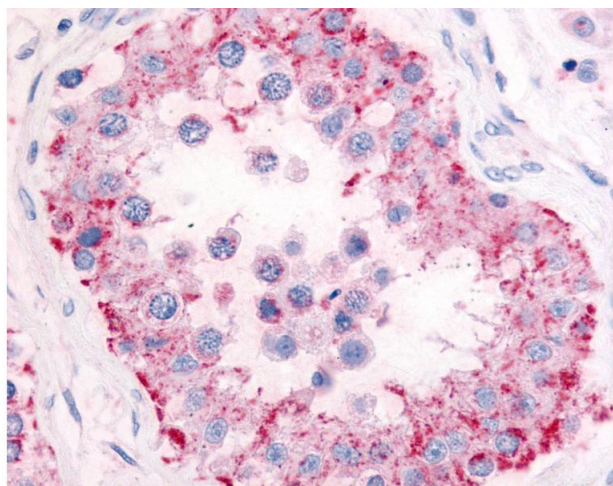
Buffer:	PBS, less than 0.1 % sodium azide.
Preservative:	Sodium azide
Precaution of Use:	This product contains Sodium azide: a POISONOUS AND HAZARDOUS SUBSTANCE which should be handled by trained staff only.
Storage:	4 °C, -20 °C
Storage Comment:	Aliquot and store undiluted at -20°C or below for up to 1 year. Can be stored undiluted at 4°C for up to 1 month. Avoid freeze-thaw cycles.
Expiry Date:	12 months

Images



Immunohistochemistry (Paraffin-embedded Sections)

Image 1. Human Testis (formalin-fixed, paraffin-embedded) stained with PDE11A antibody ABIN213553 at 5 ug/ml followed by biotinylated goat anti-rabbit IgG secondary antibody ABIN481713, alkaline phosphatase-streptavidin and chromogen.



Immunohistochemistry

Image 2. Anti-PDE11A antibody IHC of human testis. Immunohistochemistry of formalin-fixed, paraffin-embedded tissue after heat-induced antigen retrieval.