

Datasheet for ABIN213554  
**anti-WNK1 antibody (Internal Region)**[Go to Product page](#)

## 2 Images

## Overview

Quantity:	50 µg
Target:	WNK1
Binding Specificity:	Internal Region
Reactivity:	Human, Mouse, Rat, Horse, Monkey, Rabbit, Pig, Bat, Hamster, Chicken, Cow
Host:	Rabbit
Clonality:	Polyclonal
Conjugate:	This WNK1 antibody is un-conjugated
Application:	ELISA, Immunohistochemistry (IHC), Immunohistochemistry (Paraffin-embedded Sections) (IHC (p))

## Product Details

Brand:	IHC-plus™
Immunogen:	Synthetic 20 amino acid peptide from internal region of human WNK1. Percent identity with other species by BLAST analysis: Human, Gorilla, Gibbon, Monkey, Marmoset, Mouse, Rat, Bovine, Bat, Hamster, Elephant, Panda, Horse, Rabbit, Pig, Opossum, Turkey, Chicken (100%), Platypus, Xenopus (95%), Lizard (80%).  Type of Immunogen: Synthetic peptide
Specificity:	Human WNK1. BLAST analysis of the peptide immunogen showed no homology with other human proteins.
Predicted Reactivity:	Percent identity with other species by BLAST analysis: Human, Gorilla, Gibbon, Monkey,

## Product Details

Marmoset, Mouse, Rat, Bovine, Bat, Hamster, Elephant, Panda, Horse, Rabbit, Pig, Opossum, Turkey, Chicken (100%) Platypus, Xenopus (95%) Lizard (80%).

Purification: Immunoaffinity purified

## Target Details

Target: WNK1

Alternative Name: WNK1 / p65 ([WNK1 Products](#))

Background: Name/Gene ID: WNK1  
Subfamily: WNK  
Family: Protein Kinase

Synonyms: WNK1, Erythrocyte 65 kDa protein, HSN2, KIAA0344, Kinase deficient protein, HWNK1, PHA2C, PRKWNK1, PSK, HSN2, KDP

Gene ID: 65125

## Application Details

Application Notes: Approved: ELISA, IHC, IHC-P (7 µg/mL)

Usage: Immunohistochemistry: This antibody was validated for use in immunohistochemistry on a panel of 21 formalin-fixed, paraffin-embedded (FFPE) human tissues after heat induced antigen retrieval in pH 6.0 citrate buffer. After incubation with the primary antibody, slides were incubated with biotinylated secondary antibody, followed by alkaline phosphatase-streptavidin and chromogen. The stained slides were evaluated by a pathologist to confirm staining specificity. The optimal working concentration for this antibody was determined to be 4 µg/mL.

Comment: Target Species of Antibody: Human

Restrictions: For Research Use only

## Handling

Format: Liquid

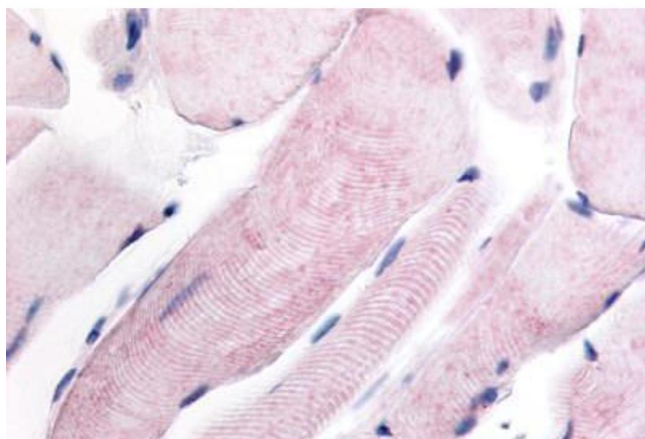
Concentration: Lot specific

Buffer: PBS, less than 0.1 % sodium azide.

## Handling

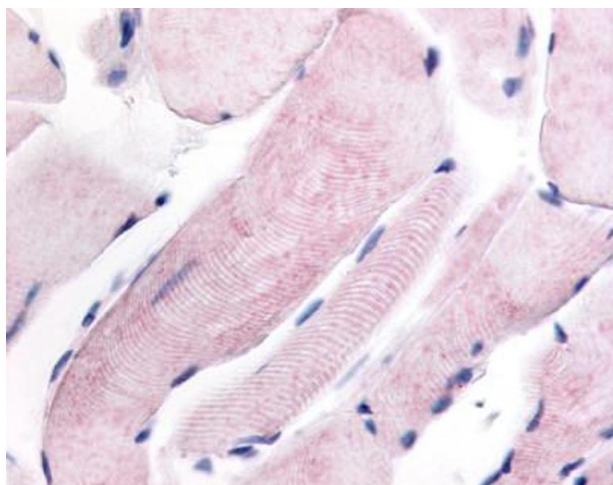
Preservative:	Sodium azide
Precaution of Use:	This product contains Sodium azide: a POISONOUS AND HAZARDOUS SUBSTANCE which should be handled by trained staff only.
Storage:	4 °C,-20 °C
Storage Comment:	Aliquot and store undiluted at -20°C or below for up to 1 year. Can be stored undiluted at 4°C for up to 1 month. Avoid freeze-thaw cycles.
Expiry Date:	12 months

## Images



### Immunohistochemistry (Paraffin-embedded Sections)

**Image 1.** Human Skeletal Muscle (formalin-fixed, paraffin-embedded) stained with WNK1 antibody ABIN213554 at 4 ug/ml followed by biotinylated goat anti-rabbit IgG secondary antibody ABIN481713, alkaline phosphatase-streptavidin and chromogen.



### Immunohistochemistry

**Image 2.** Anti-WNK1 antibody IHC of human skeletal muscle. Immunohistochemistry of formalin-fixed, paraffin-embedded tissue after heat-induced antigen retrieval.