

Datasheet for ABIN213555
anti-PDE3A antibody (Internal Region)



[Go to Product page](#)

2 Images

Overview

Quantity:	50 µg
Target:	PDE3A
Binding Specificity:	Internal Region
Reactivity:	Human, Rat, Mouse, Monkey, Horse
Host:	Rabbit
Clonality:	Polyclonal
Conjugate:	This PDE3A antibody is un-conjugated
Application:	Immunohistochemistry (IHC), Immunohistochemistry (Paraffin-embedded Sections) (IHC (p))

Product Details

Brand:	IHC-plus™
Immunogen:	Synthetic 17 amino acid peptide from internal region of human PDE3A. Percent identity with other species by BLAST analysis: Human, Gibbon, Monkey, Mouse, Rat, Horse, Opossum (100%), Chicken (88%). Type of Immunogen: Synthetic peptide
Specificity:	Human PDE3A. BLAST analysis of the peptide immunogen showed no homology with other human proteins.
Predicted Reactivity:	Percent identity with other species by BLAST analysis: Human, Gibbon, Monkey, Mouse, Rat, Horse, Opossum (100%) Chicken (88%).
Purification:	Immunoaffinity purified

Target Details

Target:	PDE3A
Alternative Name:	PDE3A (PDE3A Products)
Background:	Name/Gene ID: PDE3A Subfamily: PDE - cAMP/cGMP dual-specific, cGMP-inhibited Family: Phosphodiesterase Synonyms: PDE3A, CGI-PDE-A, HcGIP2, Phosphodiesterase 3a, Phosphodiesterase isoform 3a, CGI-PDE, CGI-PDE A, CGIP2, HPDE-3A, Phosphodiesterase type 3A
Gene ID:	5139
Pathways:	cAMP Metabolic Process

Application Details

Application Notes:	Approved: IHC, IHC-P (20 µg/mL) Usage: Immunohistochemistry: This antibody was validated for use in immunohistochemistry on a panel of 21 formalin-fixed, paraffin-embedded (FFPE) human tissues after heat induced antigen retrieval in pH 6.0 citrate buffer. After incubation with the primary antibody, slides were incubated with biotinylated secondary antibody, followed by alkaline phosphatase-streptavidin and chromogen. The stained slides were evaluated by a pathologist to confirm staining specificity. The optimal working concentration for this antibody was determined to be 20 µg/mL.
Comment:	Target Species of Antibody: Human
Restrictions:	For Research Use only

Handling

Format:	Liquid
Concentration:	Lot specific
Buffer:	PBS, less than 0.1 % sodium azide.
Preservative:	Sodium azide
Precaution of Use:	This product contains Sodium azide: a POISONOUS AND HAZARDOUS SUBSTANCE which should be handled by trained staff only.

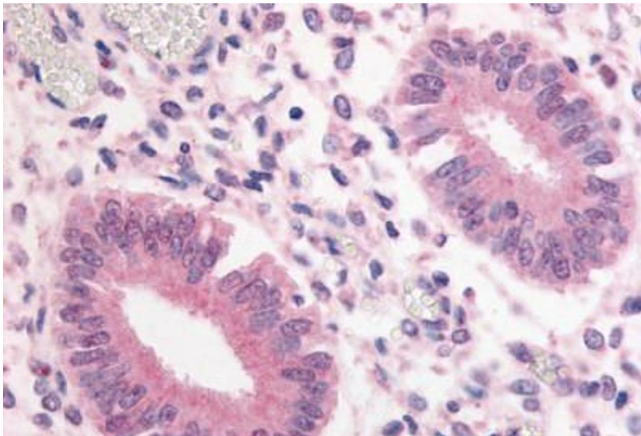
Handling

Storage: 4 °C,-20 °C

Storage Comment: Aliquot and store undiluted at -20°C or below for up to 1 year. Can be stored undiluted at 4°C for up to 1 month. Avoid freeze-thaw cycles.

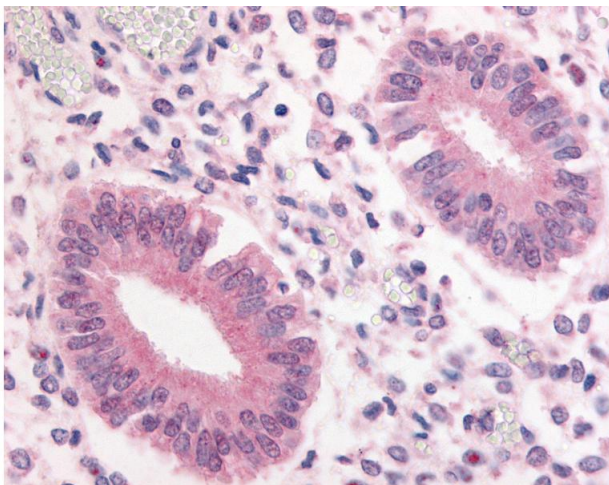
Expiry Date: 12 months

Images



Immunohistochemistry (Paraffin-embedded Sections)

Image 1. Human Uterus (formalin-fixed, paraffin-embedded) stained with PDE3A antibody ABIN213555 at 20 ug/ml followed by biotinylated goat anti-rabbit IgG secondary antibody ABIN481713, alkaline phosphatase-streptavidin and chromogen.



Immunohistochemistry

Image 2. Anti-PDE3A antibody IHC of human uterus. Immunohistochemistry of formalin-fixed, paraffin-embedded tissue after heat-induced antigen retrieval.