

Datasheet for ABIN213565 anti-DPP8 antibody (N-Term)



[Go to Product page](#)

2 Images

Overview

Quantity:	50 µg
Target:	DPP8
Binding Specificity:	N-Term
Reactivity:	Human, Dog, Monkey, Rabbit, Bat, Cow, Horse, Pig
Host:	Rabbit
Clonality:	Polyclonal
Conjugate:	This DPP8 antibody is un-conjugated
Application:	Immunohistochemistry (IHC), Immunohistochemistry (Paraffin-embedded Sections) (IHC (p))

Product Details

Brand:	IHC-plus™
Immunogen:	Synthetic 16 amino acid peptide from N-terminus of human DPP8 (NP_569118.1). Percent identity with other species by BLAST analysis: Human, Gorilla, Gibbon, Monkey, Marmoset, Dog, Bovine, Bat, Panda, Horse, Rabbit, Pig (100%), Mouse, Rat, Elephant, Opossum (94%), Turkey, Chicken (81%).
Specificity:	Human DPP8. BLAST analysis of the peptide immunogen showed no homology with other human proteins, except DPP9 (56 %).
Predicted Reactivity:	Percent identity with other species by BLAST analysis: Human, Gorilla, Gibbon, Monkey, Marmoset, Dog, Bovine, Bat, Panda, Horse, Rabbit, Pig (100%) Mouse, Rat, Elephant, Opossum (94%) Turkey, Chicken (81%).
Purification:	Immunoaffinity purified

Target Details

Target:	DPP8
Alternative Name:	Dipeptidylpeptidase 8 / DPP8 (DPP8 Products)
Background:	Name/Gene ID: DPP8 Subfamily: Serine S9B Family: Protease Synonyms: DPP8, Dipeptidyl-peptidase 8, DPRP1, Dipeptidyl peptidase VIII, Dipeptidylpeptidase 8, DPRP-1, Dipeptidyl peptidase 8, MSTP141, Prolyl dipeptidase DPP8, DP8, DPP VIII
Gene ID:	54878
NCBI Accession:	NP_569118

Application Details

Application Notes:	Approved: IHC, IHC-P (20 µg/mL) Usage: Immunohistochemistry: This antibody was validated for use in immunohistochemistry on a panel of 21 formalin-fixed, paraffin-embedded (FFPE) human tissues after heat induced antigen retrieval in pH 6.0 citrate buffer. After incubation with the primary antibody, slides were incubated with biotinylated secondary antibody, followed by alkaline phosphatase-streptavidin and chromogen. The stained slides were evaluated by a pathologist to confirm staining specificity. The optimal working concentration for this antibody was determined to be 20 µg/mL.
Comment:	Target Species of Antibody: Human
Restrictions:	For Research Use only

Handling

Format:	Liquid
Concentration:	Lot specific
Buffer:	PBS, less than 0.1 % sodium azide.
Preservative:	Sodium azide
Precaution of Use:	This product contains Sodium azide: a POISONOUS AND HAZARDOUS SUBSTANCE which should be handled by trained staff only.

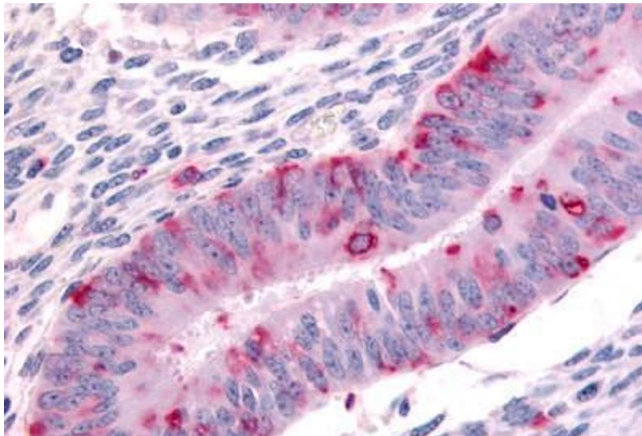
Handling

Storage: 4 °C, -20 °C

Storage Comment: Aliquot and store undiluted at -20°C or below for up to 1 year. Can be stored undiluted at 4°C for up to 1 month. Avoid freeze-thaw cycles.

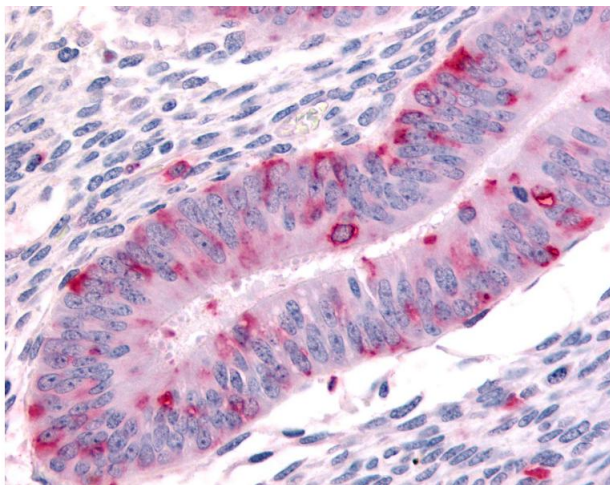
Expiry Date: 12 months

Images



Immunohistochemistry (Paraffin-embedded Sections)

Image 1. Human Uterus (formalin-fixed, paraffin-embedded) stained with DPP8 antibody ABIN213565 at 20 ug/ml followed by biotinylated goat anti-rabbit IgG secondary antibody ABIN481713, alkaline phosphatase-streptavidin and chromogen.



Immunohistochemistry

Image 2. Anti-DPP8 antibody IHC of human uterus. Immunohistochemistry of formalin-fixed, paraffin-embedded tissue after heat-induced antigen retrieval.