

Datasheet for ABIN213581

anti-BACE1 antibody (C-Term)

3 Images



[Go to Product page](#)

Overview

Quantity:	50 µg
Target:	BACE1
Binding Specificity:	C-Term
Reactivity:	Human, Monkey
Host:	Rabbit
Clonality:	Polyclonal
Conjugate:	This BACE1 antibody is un-conjugated
Application:	Immunohistochemistry (IHC), Immunohistochemistry (Paraffin-embedded Sections) (IHC (p))

Product Details

Brand:	IHC-plus™
Immunogen:	Synthetic 18 amino acid peptide from C-terminus of human BACE1. Percent identity with other species by BLAST analysis: Human, Gorilla, Gibbon, Monkey, Marmoset (100%), Mouse, Rat, Dog, Bat, Bovine, Hamster, Elephant, Panda, Horse, Rabbit, Pig, Guinea pig (94%), Opossum (89%), Turkey, Chicken, Platypus (83%). Type of Immunogen: Synthetic peptide
Specificity:	Human BACE1. BLAST analysis of the peptide immunogen showed no homology with other human proteins, except CPD (39 %).
Predicted Reactivity:	Percent identity with other species by BLAST analysis: Human, Gorilla, Gibbon, Monkey, Marmoset (100%) Mouse, Rat, Dog, Bat, Bovine, Hamster, Elephant, Panda, Horse, Rabbit, Pig,

Product Details

Guinea pig (94%) Opossum (89%) Turkey, Chicken, Platypus (83%).

Purification: Immunoaffinity purified

Target Details

Target: BACE1

Alternative Name: BACE1 / BACE ([BACE1 Products](#))

Background: Name/Gene ID: BACE1

Subfamily: Aspartic A1

Family: Protease

Synonyms: BACE1, APP beta-secretase, Asp 2, ASP2, Aspartyl protease 2, Aspartylprotease 2, Beta-secretase, Beta-site APP-cleaving enzyme, BACE, HSPC104, KIAA1149, B-Secretase, Beta-secretase 1, Memapsin-2

Gene ID: 23621

Application Details

Application Notes: Approved: IHC, IHC-P (2.5 - 5 µg/mL)

Usage: Immunohistochemistry: This antibody was validated for use in immunohistochemistry on a panel of 21 formalin-fixed, paraffin-embedded (FFPE) human tissues after heat induced antigen retrieval in pH 6.0 citrate buffer. After incubation with the primary antibody, slides were incubated with biotinylated secondary antibody, followed by alkaline phosphatase-streptavidin and chromogen. The stained slides were evaluated by a pathologist to confirm staining specificity. The optimal working concentration for this antibody was determined to be 5 µg/mL.

Comment: Target Species of Antibody: Human

Restrictions: For Research Use only

Handling

Format: Liquid

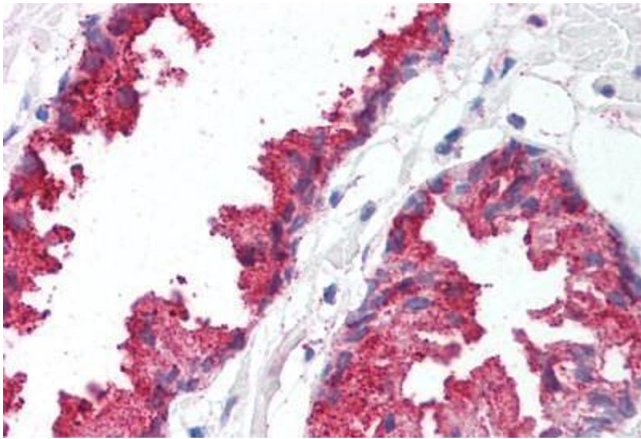
Concentration: Lot specific

Buffer: PBS, less than 0.1 % sodium azide.

Handling

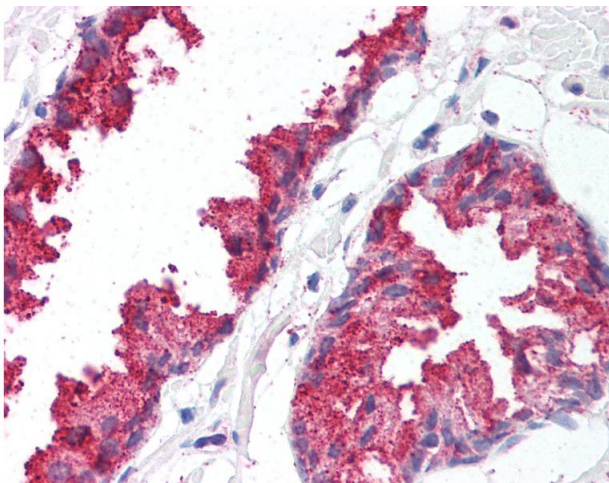
Preservative:	Sodium azide
Precaution of Use:	This product contains Sodium azide: a POISONOUS AND HAZARDOUS SUBSTANCE which should be handled by trained staff only.
Storage:	4 °C,-20 °C
Storage Comment:	Aliquot and store undiluted at -20°C or below for up to 1 year. Can be stored undiluted at 4°C for up to 1 month. Avoid freeze-thaw cycles.
Expiry Date:	12 months

Images



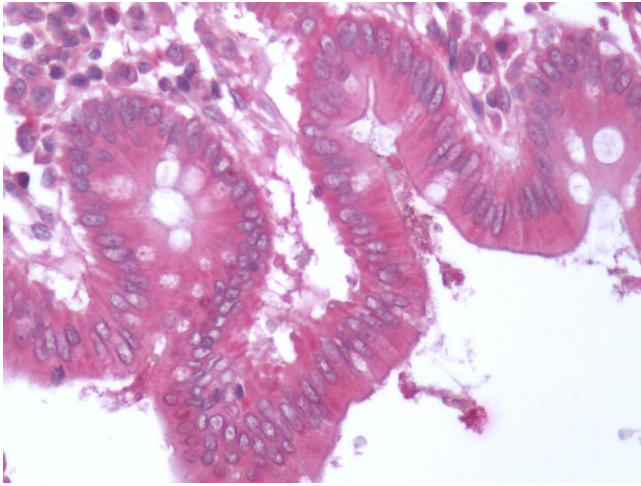
Immunohistochemistry (Paraffin-embedded Sections)

Image 1. Human Prostate (formalin-fixed, paraffin-embedded) stained with BACE1 antibody ABIN213581 at 5 ug/ml followed by biotinylated goat anti-rabbit IgG secondary antibody ABIN481713, alkaline phosphatase-streptavidin and chromogen.



Immunohistochemistry

Image 2. Anti-BACE1 antibody IHC of human prostate. Immunohistochemistry of formalin-fixed, paraffin-embedded tissue after heat-induced antigen retrieval.



Immunohistochemistry (Paraffin-embedded Sections)

Image 3. Human Colon: Formalin-Fixed, Paraffin-Embedded (FFPE)