

Datasheet for ABIN213604  
**anti-USP20 antibody (Internal Region)**



[Go to Product page](#)

2 Images

## Overview

Quantity:	50 µg
Target:	USP20
Binding Specificity:	Internal Region
Reactivity:	Human, Monkey
Host:	Rabbit
Clonality:	Polyclonal
Conjugate:	This USP20 antibody is un-conjugated
Application:	Immunohistochemistry (IHC), Immunohistochemistry (Paraffin-embedded Sections) (IHC (p))

## Product Details

Brand:	IHC-plus™
Immunogen:	Synthetic 18 amino acid peptide from internal region of human USP20. Percent identity with other species by BLAST analysis: Human, Gorilla, Monkey, Marmoset (100%), Orangutan, Gibbon, Rabbit (94%), Hamster (89%), Mouse, Bovine, Bat, Elephant, Panda, Horse, Pig, Opossum, Turkey, Chicken (83%).  Type of Immunogen: Synthetic peptide
Specificity:	Human USP20. BLAST analysis of the peptide immunogen showed no homology with other human proteins.
Predicted Reactivity:	Percent identity with other species by BLAST analysis: Human, Gorilla, Monkey, Marmoset (100%) Orangutan, Gibbon, Rabbit (94%) Hamster (89%) Mouse, Bovine, Bat, Elephant, Panda,

## Product Details

---

Horse, Pig, Opossum, Turkey, Chicken (83%).

Purification: Immunoaffinity purified

## Target Details

---

Target: USP20

Alternative Name: VDU2 / USP20 ([USP20 Products](#))

Background: Name/Gene ID: USP20  
Subfamily: Cysteine C19  
Family: Protease

Synonyms: USP20, Deubiquitinating enzyme 20, Ubiquitin specific protease 20, Ubiquitin thioesterase 20, HVDU2, KIAA1003, LSFR3A, Ubiquitin thiolesterase 20, VDU2

Gene ID: 10868

Pathways: [Regulation of G-Protein Coupled Receptor Protein Signaling](#)

## Application Details

---

Application Notes: Approved: IHC, IHC-P (10 µg/mL)

Usage: Immunohistochemistry: This antibody was validated for use in immunohistochemistry on a panel of 21 formalin-fixed, paraffin-embedded (FFPE) human tissues after heat induced antigen retrieval in pH 6.0 citrate buffer. After incubation with the primary antibody, slides were incubated with biotinylated secondary antibody, followed by alkaline phosphatase-streptavidin and chromogen. The stained slides were evaluated by a pathologist to confirm staining specificity. The optimal working concentration for this antibody was determined to be 10 µg/mL.

Comment: Target Species of Antibody: Human

Restrictions: For Research Use only

## Handling

---

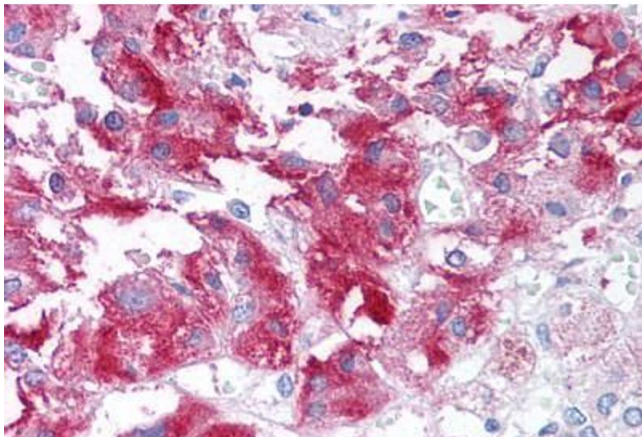
Format: Liquid

Concentration: Lot specific

## Handling

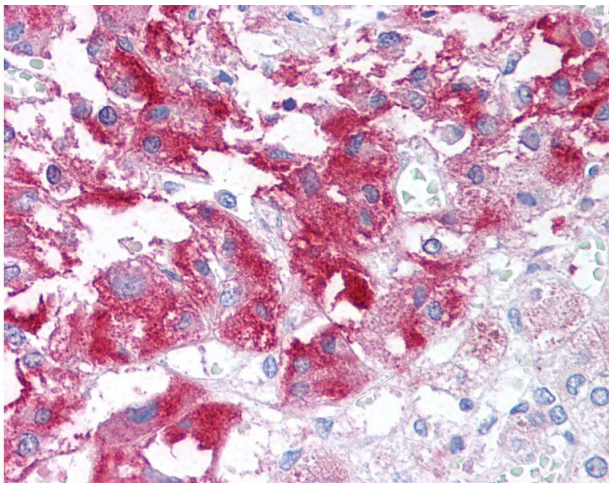
Buffer:	PBS, less than 0.1 % sodium azide.
Preservative:	Sodium azide
Precaution of Use:	This product contains Sodium azide: a POISONOUS AND HAZARDOUS SUBSTANCE which should be handled by trained staff only.
Storage:	4 °C,-20 °C
Storage Comment:	Aliquot and store undiluted at -20°C or below for up to 1 year. Can be stored undiluted at 4°C for up to 1 month. Avoid freeze-thaw cycles.
Expiry Date:	12 months

## Images



### Immunohistochemistry (Paraffin-embedded Sections)

**Image 1.** Human Adrenal Medulla (formalin-fixed, paraffin-embedded) stained with USP20 antibody ABIN213604 at 10 ug/ml followed by biotinylated goat anti-rabbit IgG secondary antibody ABIN481713, alkaline phosphatase-streptavidin and chromogen.



### Immunohistochemistry

**Image 2.** Anti-USP20 antibody IHC of human adrenal medulla. Immunohistochemistry of formalin-fixed, paraffin-embedded tissue after heat-induced antigen retrieval.