

Datasheet for ABIN213636

anti-GPR18 antibody (Cytoplasmic Domain)



[Go to Product page](#)

2 Images

Overview

Quantity:	50 µg
Target:	GPR18
Binding Specificity:	Cytoplasmic Domain
Reactivity:	Human, Monkey, Bat, Horse, Rabbit
Host:	Rabbit
Clonality:	Polyclonal
Conjugate:	This GPR18 antibody is un-conjugated
Application:	Immunohistochemistry (IHC), Immunohistochemistry (Paraffin-embedded Sections) (IHC (p))

Product Details

Brand:	IHC-plus™
Immunogen:	Synthetic 16 amino acid peptide from 3rd cytoplasmic domain of human GPR18. Percent identity with other species by BLAST analysis: Human, Gorilla, Gibbon, Monkey, Marmoset, Bat, Elephant, Horse, Rabbit, Pufferfish (100%), Mouse, Rat, Bovine, Pig, Opossum, Salmon, Zebrafish, Stickleback (94%), Chicken, Platypus, Lizard, Catfish (88%), Hamster, Turkey (81%). Type of Immunogen: Synthetic peptide
Specificity:	Human GPR18. BLAST analysis of the peptide immunogen showed no homology with other human proteins, except ESYT3 (50 %).
Predicted Reactivity:	Percent identity with other species by BLAST analysis: Human, Gorilla, Gibbon, Monkey, Marmoset, Bat, Elephant, Horse, Rabbit, Pufferfish (100%) Mouse, Rat, Bovine, Pig, Opossum,

Product Details

Salmon, Zebrafish, Stickleback (94%) Chicken, Platypus, Lizard, Catfish (88%) Hamster, Turkey (81%).

Purification: Immunoaffinity purified

Target Details

Target: GPR18

Alternative Name: GPCRW / GPR18 ([GPR18 Products](#))

Background: Name/Gene ID: GPR18
Subfamily: Orphan-A
Family: GPCR

Synonyms: GPR18, GPCRW, G protein-coupled receptor 18, NAGly receptor, G-protein coupled receptor 18, N-arachidonyl glycine receptor

Gene ID: 2841

Application Details

Application Notes: Approved: IHC, IHC-P (10 µg/mL)

Usage: Immunohistochemistry: This antibody was validated for use in immunohistochemistry on a panel of 21 formalin-fixed, paraffin-embedded (FFPE) human tissues after heat induced antigen retrieval in pH 6.0 citrate buffer. After incubation with the primary antibody, slides were incubated with biotinylated secondary antibody, followed by alkaline phosphatase-streptavidin and chromogen. The stained slides were evaluated by a pathologist to confirm staining specificity. The optimal working concentration for this antibody was determined to be 10 µg/mL.

Comment: Target Species of Antibody: Human

Restrictions: For Research Use only

Handling

Format: Liquid

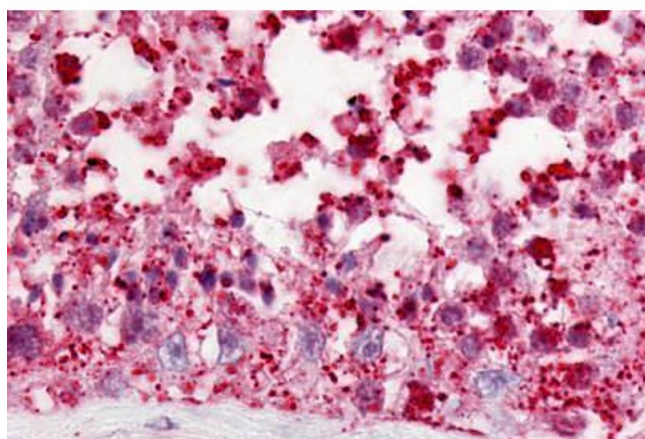
Concentration: Lot specific

Buffer: PBS, less than 0.1 % sodium azide.

Handling

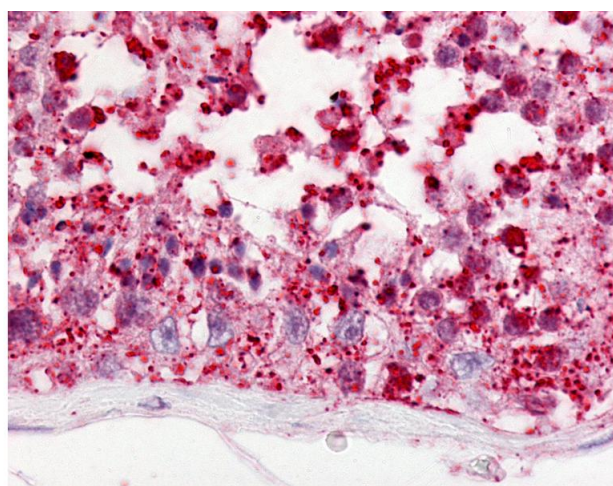
Preservative:	Sodium azide
Precaution of Use:	This product contains Sodium azide: a POISONOUS AND HAZARDOUS SUBSTANCE which should be handled by trained staff only.
Storage:	4 °C,-20 °C
Storage Comment:	Aliquot and store undiluted at -20°C or below for up to 1 year. Can be stored undiluted at 4°C for up to 1 month. Avoid freeze-thaw cycles.
Expiry Date:	12 months

Images



Immunohistochemistry (Paraffin-embedded Sections)

Image 1. Human Testis (formalin-fixed, paraffin-embedded) stained with GPR18 antibody ABIN213636 at 10 ug/ml followed by biotinylated goat anti-rabbit IgG secondary antibody ABIN481713, alkaline phosphatase-streptavidin and chromogen.



Immunohistochemistry

Image 2. Anti-GPR18 antibody IHC of human testis. Immunohistochemistry of formalin-fixed, paraffin-embedded tissue after heat-induced antigen retrieval.