

Datasheet for ABIN213638

anti-PTGER3 antibody (Cytoplasmic Domain)**2** Images[Go to Product page](#)

Overview

Quantity:	50 µg
Target:	PTGER3
Binding Specificity:	Cytoplasmic Domain
Reactivity:	Human, Mouse, Rat, Horse, Rabbit, Monkey, Bat
Host:	Rabbit
Clonality:	Polyclonal
Conjugate:	This PTGER3 antibody is un-conjugated
Application:	ELISA, Immunohistochemistry (IHC), Immunohistochemistry (Paraffin-embedded Sections) (IHC (p))

Product Details

Brand:	IHC-plus™
Immunogen:	Synthetic 18 amino acid peptide from 3rd cytoplasmic domain of human PTGER3 / EP3. Percent identity with other species by BLAST analysis: Human, Gorilla, Gibbon, Marmoset, Mouse, Rat, Bat, Panda, Horse, Rabbit (100%), Elephant, Pig (94%), Monkey, Bovine (89%). Type of Immunogen: Synthetic peptide
Specificity:	Human PTGER3 / EP3. BLAST analysis of the peptide immunogen showed no homology with other human proteins.
Predicted Reactivity:	Percent identity with other species by BLAST analysis: Human, Gorilla, Gibbon, Marmoset, Mouse, Rat, Bat, Panda, Horse, Rabbit (100%) Elephant, Pig (94%) Monkey, Bovine (89%).

Product Details

Purification: Immunoaffinity purified

Target Details

Target: PTGER3

Alternative Name: PTGER3 / EP3 ([PTGER3 Products](#))

Background: Name/Gene ID: PTGER3

Subfamily: Prostanoid

Family: GPCR

Synonyms: PTGER3, Ep3 prostanoid receptor, Ep3 receptor, EP3-I, EP3e, EP3-II, EP3-III, EP3-IV, PGE receptor, EP3 subtype, Prostaglandin receptor (PGE-2), Prostaglandin ep3 receptor, Prostanoid EP3 receptor, PGE receptor EP3 subtype, Pge2 receptor ep3, PGE2 receptor EP3 subtype, Prostaglandin E receptor 3, Prostaglandin e2 receptor ep3, EP3, Ep3 subtype pge2 receptor, PGE2-R, Prostaglandin E receptor EP3

Gene ID: 5733

Application Details

Application Notes: Approved: ELISA, IHC, IHC-P (4 µg/mL)

Usage: Immunohistochemistry: This antibody was validated for use in immunohistochemistry on a panel of 21 formalin-fixed, paraffin-embedded (FFPE) human tissues after heat induced antigen retrieval in pH 6.0 citrate buffer. After incubation with the primary antibody, slides were incubated with biotinylated secondary antibody, followed by alkaline phosphatase-streptavidin and chromogen. The stained slides were evaluated by a pathologist to confirm staining specificity. The optimal working concentration for this antibody was determined to be 4 µg/mL.

Comment: Target Species of Antibody: Human

Restrictions: For Research Use only

Handling

Format: Liquid

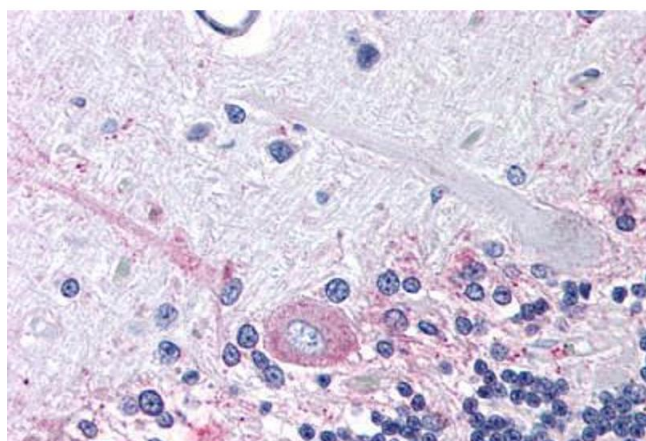
Concentration: Lot specific

Buffer: PBS, less than 0.1 % sodium azide.

Handling

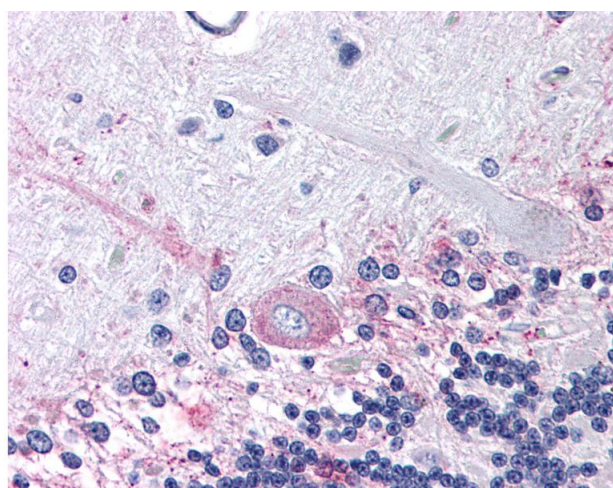
Preservative:	Sodium azide
Precaution of Use:	This product contains Sodium azide: a POISONOUS AND HAZARDOUS SUBSTANCE which should be handled by trained staff only.
Storage:	4 °C,-20 °C
Storage Comment:	Aliquot and store undiluted at -20°C or below for up to 1 year. Can be stored undiluted at 4°C for up to 1 month. Avoid freeze-thaw cycles.
Expiry Date:	12 months

Images



Immunohistochemistry

Image 1. Human Brain, Cerebellum (formalin-fixed, paraffin-embedded) stained with PTGER3 antibody ABIN213638 at 4 ug/ml followed by biotinylated goat anti-rabbit IgG secondary antibody ABIN481713, alkaline phosphatase-streptavidin and chromogen.



Immunohistochemistry

Image 2. Anti-PTGER3 / EP3 antibody IHC of human brain, cerebellum. Immunohistochemistry of formalin-fixed, paraffin-embedded tissue after heat-induced antigen retrieval.