

Datasheet for ABIN213933  
**anti-HUWE1 antibody (C-Term)**

## 3 Images

[Go to Product page](#)

## Overview

Quantity:	0.05 mg
Target:	HUWE1
Binding Specificity:	C-Term
Reactivity:	Human, Mouse, Rat
Host:	Rabbit
Clonality:	Polyclonal
Conjugate:	This HUWE1 antibody is un-conjugated
Application:	Western Blotting (WB), Immunohistochemistry (Paraffin-embedded Sections) (IHC (p)), Immunohistochemistry (IHC)

## Product Details

Brand:	IHC-plus™
Isotype:	IgG
Purification:	Immunoaffinity purified

## Target Details

Target:	HUWE1
Alternative Name:	HUWE1 / ARFBP1 ( <a href="#">HUWE1 Products</a> )
Background:	Name/Gene ID: HUWE1

Synonyms: HUWE1, ARF-binding protein 1, ARF-BP1, BJ-HCC-24 tumor antigen, lb772,

## Target Details

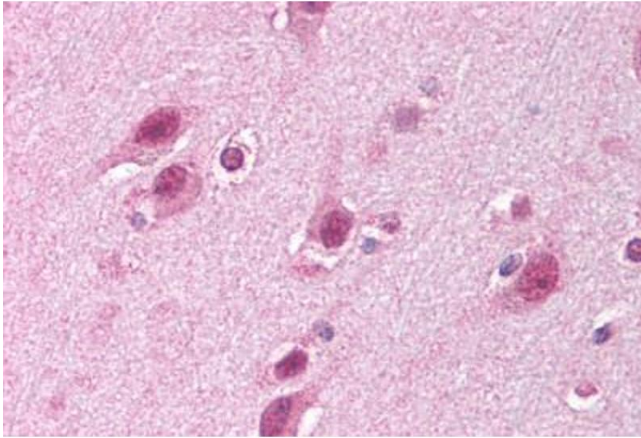
	KIAA0312, LASU1, Mcl-1 ubiquitin ligase E3, HECTH9, MULE, HSPC272, KIAA1578, URE-B1, UREB1, URE-binding protein 1, HECT domain protein LASU1, Large structure of UREB1
Gene ID:	10075
UniProt:	<a href="#">Q7Z6Z7</a>

## Application Details

Application Notes:	Approved: IHC, IHC-P (5 µg/mL), WB (2 µg/mL)  Usage: Immunohistochemistry: This antibody was validated for use in immunohistochemistry on a panel of 21 formalin-fixed, paraffin-embedded (FFPE) human tissues after heat induced antigen retrieval in pH 6.0 citrate buffer. After incubation with the primary antibody, slides were incubated with biotinylated secondary antibody, followed by alkaline phosphatase-streptavidin and chromogen. The stained slides were evaluated by a pathologist to confirm staining specificity. The optimal working concentration for this antibody was determined to be 5 µg/mL.
Comment:	Target Species of Antibody: Human
Restrictions:	For Research Use only

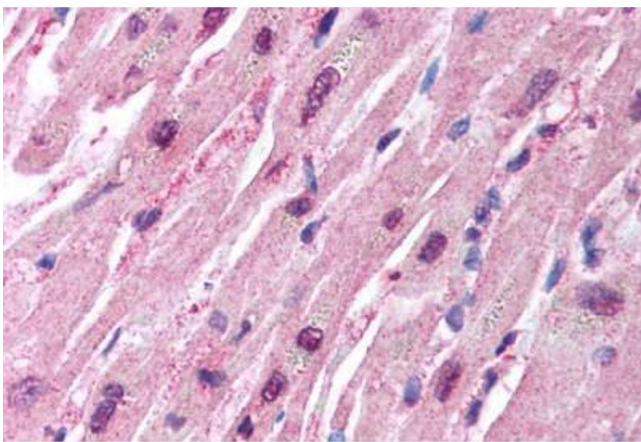
## Handling

Format:	Liquid
Concentration:	Lot specific
Buffer:	PBS, 0.02 % sodium azide.
Preservative:	Sodium azide
Precaution of Use:	This product contains Sodium azide: a POISONOUS AND HAZARDOUS SUBSTANCE which should be handled by trained staff only.
Handling Advice:	avoid freeze thaw cycles. Store undiluted.
Storage:	4 °C,-20 °C
Storage Comment:	Store at 4°C for 3 months and -20°C, stable for up to 1 year. Avoid repeated freeze-thaw cycles.
Expiry Date:	12 months



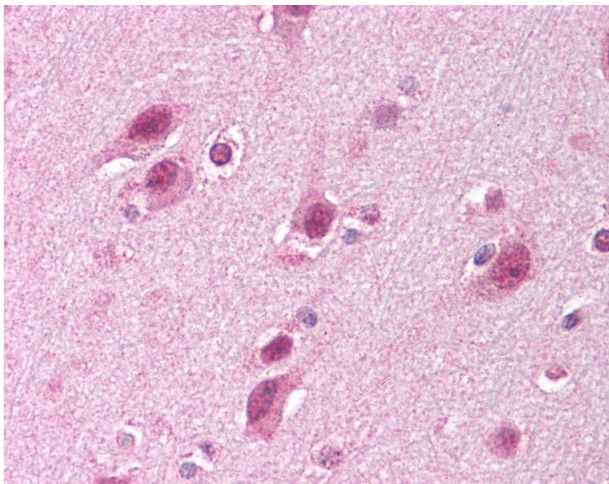
#### Immunohistochemistry (Paraffin-embedded Sections)

**Image 1.** Human Brain, Cortex (formalin-fixed, paraffin-embedded) stained with HUWE1 antibody ABIN213933 at 5 ug/ml followed by biotinylated goat anti-rabbit IgG secondary antibody ABIN481713, alkaline phosphatase-streptavidin and chromogen.



#### Immunohistochemistry (Paraffin-embedded Sections)

**Image 2.** Human Heart (formalin-fixed, paraffin-embedded) stained with HUWE1 antibody ABIN213933 at 5 ug/ml followed by biotinylated goat anti-rabbit IgG secondary antibody ABIN481713, alkaline phosphatase-streptavidin and chromogen.



#### Immunohistochemistry

**Image 3.** Anti-HUWE1 antibody IHC of human brain, cortex. Immunohistochemistry of formalin-fixed, paraffin-embedded tissue after heat-induced antigen retrieval. Antibody concentration 5 ug/ml.