

Datasheet for ABIN213940

anti-IL22 Receptor alpha 1 antibody (N-Term)**2** Images[Go to Product page](#)

Overview

Quantity:	0.05 mg
Target:	IL22 Receptor alpha 1 (IL22RA1)
Binding Specificity:	N-Term
Reactivity:	Human, Rat
Host:	Rabbit
Clonality:	Polyclonal
Conjugate:	This IL22 Receptor alpha 1 antibody is un-conjugated
Application:	Western Blotting (WB), Immunohistochemistry (IHC), Immunohistochemistry (Paraffin-embedded Sections) (IHC (p)), Immunocytochemistry (ICC)

Product Details

Brand:	IHC-plus™
Isotype:	IgG
Purification:	Immunoaffinity purified

Target Details

Target:	IL22 Receptor alpha 1 (IL22RA1)
Alternative Name:	IL22RA1 / IL22R (IL22RA1 Products)
Background:	Name/Gene ID: IL22RA1 Family: Interleukin

Target Details

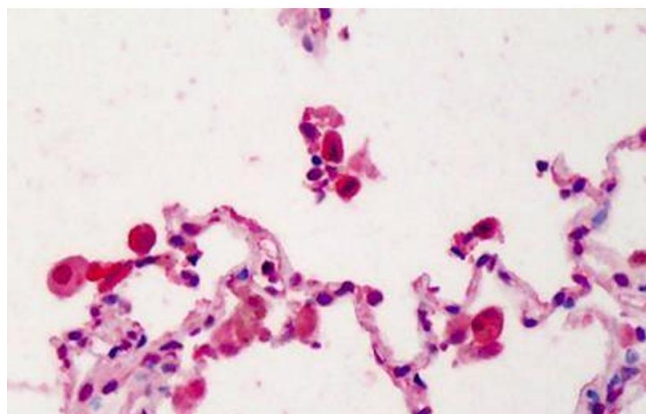
	Synonyms: IL22RA1, CRF2-9, IL-22RA1, IL-22 receptor subunit alpha-1, IL22R, IL-22R-alpha-1, ZcytoR11, IL22R1, Interleukin 22 receptor
Gene ID:	58985
UniProt:	Q8N6P7

Application Details

Application Notes:	Approved: ICC, IHC, IHC-P (5 µg/mL), WB (0.5 - 1 µg/mL) Usage: Immunohistochemistry: This antibody was validated for use in immunohistochemistry on a panel of 21 formalin-fixed, paraffin-embedded (FFPE) human tissues after heat induced antigen retrieval in pH 6.0 citrate buffer. After incubation with the primary antibody, slides were incubated with biotinylated secondary antibody, followed by alkaline phosphatase-streptavidin and chromogen. The stained slides were evaluated by a pathologist to confirm staining specificity. The optimal working concentration for this antibody was determined to be 5 µg/mL.
Comment:	Target Species of Antibody: Human
Restrictions:	For Research Use only

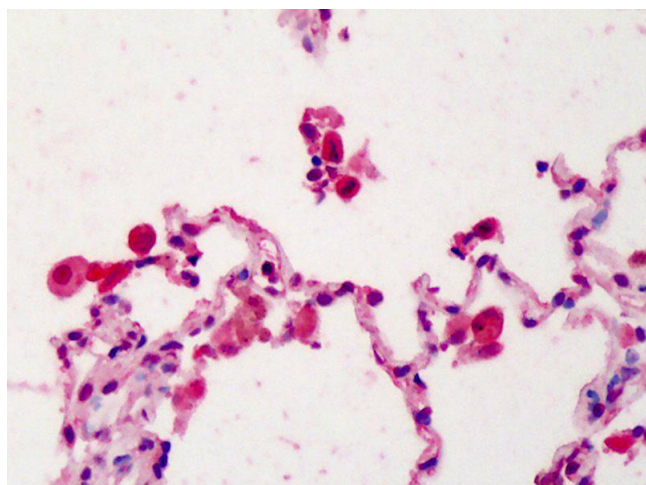
Handling

Format:	Liquid
Concentration:	Lot specific
Buffer:	PBS, 0.02 % sodium azide.
Preservative:	Sodium azide
Precaution of Use:	This product contains Sodium azide: a POISONOUS AND HAZARDOUS SUBSTANCE which should be handled by trained staff only.
Handling Advice:	avoid freeze thaw cycles. Store undiluted.
Storage:	4 °C,-20 °C
Storage Comment:	Store at 4°C for 3 months and -20°C, stable for up to 1 year. Avoid repeated freeze-thaw cycles.
Expiry Date:	12 months



Immunohistochemistry (Formalin-fixed Paraffin-embedded Sections)

Image 1. Human Lung: Formalin-Fixed, Paraffin-Embedded (FFPE)



Immunohistochemistry

Image 2. Anti-IL22RA1 / IL22R antibody IHC of human lung. Immunohistochemistry of formalin-fixed, paraffin-embedded tissue after heat-induced antigen retrieval. Antibody concentration 5 ug/ml.