

Datasheet for ABIN2140072  
**anti-GIPC1 antibody (AA 1-315)**



[Go to Product page](#)

1 Image

## Overview

Quantity:	50 µL
Target:	GIPC1
Binding Specificity:	AA 1-315
Reactivity:	Human
Host:	Mouse
Clonality:	Monoclonal
Conjugate:	This GIPC1 antibody is un-conjugated
Application:	Western Blotting (WB), ELISA

## Product Details

Immunogen:	GIPC antibody was raised in Mouse using recombinant human GIPC2 (1-315aa) purified from E. coli as the immunogen
Clone:	AT1G10
Isotype:	IgG1 kappa
Purification:	GIPC antibody was purified by Protein G affinity chromatography

## Target Details

Target:	GIPC1
Alternative Name:	GIPC ( <a href="#">GIPC1 Products</a> )
Pathways:	<a href="#">Dicarboxylic Acid Transport</a>

## Application Details

Application Notes: WB: 1:1000

Restrictions: For Research Use only

## Handling

Format: Liquid

Concentration: Lot specific

Buffer: In liquid form in Phosphate-Buffered Sale ( pH 7.4) with 0.1 % Sodium Azide

Preservative: Sodium azide

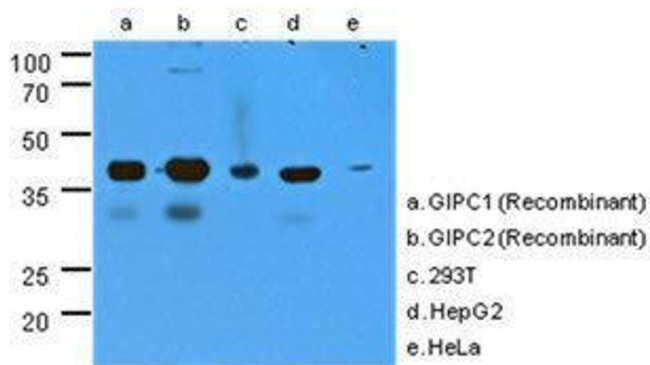
Precaution of Use: This product contains Sodium azide: a POISONOUS AND HAZARDOUS SUBSTANCE which should be handled by trained staff only.

Handling Advice: Avoid repeated freeze/thaw cycles

Storage: -20 °C

Storage Comment: Store at 4 °C for short term storage. Aliquot and store at -20 °C for long term storage.

## Images



### Western Blotting

**Image 1.** The cell lysates (40 ug) were resolved by SDS-PAGE, transferred to PVDF membrane and probed with GIPC antibody (1:1000). Proteins were visualized using a goat anti-mouse secondary antibody conjugated to HRP and an ECL detection system. The crossreaction of GIPC antibody was analyzed by using recombinant protein(20 ng) of GIPC1 and GIPC2.