

Datasheet for ABIN2140093
anti-LSM2 antibody (AA 1-95)



[Go to Product page](#)

1 Image

Overview

Quantity:	50 µL
Target:	LSM2
Binding Specificity:	AA 1-95
Reactivity:	Human
Host:	Mouse
Clonality:	Monoclonal
Conjugate:	This LSM2 antibody is un-conjugated
Application:	Western Blotting (WB), ELISA

Product Details

Immunogen:	LSM2 antibody was raised in Mouse using recombinant human LSm2 (1-95aa) purified from E. coli as the immunogen
Clone:	AT2B2
Isotype:	IgG2a kappa
Purification:	LSM2 antibody was purified by Protein G affinity chromatography

Target Details

Target:	LSM2
Alternative Name:	LSM2 (LSM2 Products)
Pathways:	Ribonucleoprotein Complex Subunit Organization

Application Details

Application Notes: WB: 1:1000-4000, IP: 1:200-400

Restrictions: For Research Use only

Handling

Format: Liquid

Concentration: Lot specific

Buffer: In liquid form in Phosphate-Buffered Sale (pH 7.4) with 0.1 % Sodium Azide

Preservative: Sodium azide

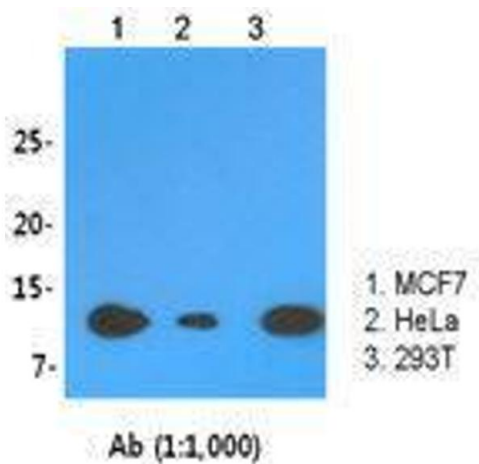
Precaution of Use: This product contains Sodium azide: a POISONOUS AND HAZARDOUS SUBSTANCE which should be handled by trained staff only.

Handling Advice: Avoid repeated freeze/thaw cycles

Storage: -20 °C

Storage Comment: Store at 4 °C for short term storage. Aliquot and store at -20 °C for long term storage.

Images



Western Blotting

Image 1. The cell lysates (30 ug) were resolved by SDS-PAGE, transferred to PVDF membrane and probed with LSm2 antibody (1:1,000). Proteins were visualized using a goat anti-mouse secondary antibody conjugated to HRP and an ECL detection system.