

Datasheet for ABIN2140160
anti-KRT23 antibody (AA 271-422)



[Go to Product page](#)

1 Image

Overview

Quantity:	50 µL
Target:	KRT23
Binding Specificity:	AA 271-422
Reactivity:	Human
Host:	Mouse
Clonality:	Monoclonal
Conjugate:	This KRT23 antibody is un-conjugated
Application:	Western Blotting (WB), ELISA

Product Details

Immunogen:	KRT23 antibody was raised in Mouse using recombinant human KRT23 (271-422aa) purified from E. coli as the immunogen
Clone:	AT2F6
Isotype:	IgG1 kappa
Purification:	KRT23 antibody was purified by Protein G affinity chromatography

Target Details

Target:	KRT23
Alternative Name:	KRT23 (KRT23 Products)

Application Details

Application Notes: WB: 1:500-1:3000, ELISA: 1:40000

Restrictions: For Research Use only

Handling

Format: Liquid

Concentration: Lot specific

Buffer: In liquid form in Phosphate-Buffered Sale (pH 7.4) with 0.1 % Sodium Azide

Preservative: Sodium azide

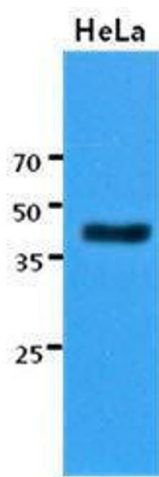
Precaution of Use: This product contains Sodium azide: a POISONOUS AND HAZARDOUS SUBSTANCE which should be handled by trained staff only.

Handling Advice: Avoid repeated freeze/thaw cycles

Storage: -20 °C

Storage Comment: Store at 4 °C for short term storage. Aliquot and store at -20 °C for long term storage.

Images



Western Blotting

Image 1. The cell lysates of HeLa (30 ug) were resolved by SDS-PAGE, transferred to PVDF membrane and probed with KRT23 antibody (1:3000). Proteins were visualized using a goat anti-mouse secondary antibody conjugated to HRP and an ECL detection system.