

Datasheet for ABIN214089
anti-CDX2 antibody (AA 161-210)

3 Images

[Go to Product page](#)

Overview

Quantity:	50 µg
Target:	CDX2
Binding Specificity:	AA 161-210
Reactivity:	Human, Mouse, Rat, Monkey, Dog, Pig, Rabbit, Guinea Pig, Bat, Chicken, Hamster
Host:	Rabbit
Clonality:	Polyclonal
Conjugate:	This CDX2 antibody is un-conjugated
Application:	Western Blotting (WB), Immunohistochemistry (IHC), Immunohistochemistry (Paraffin-embedded Sections) (IHC (p))

Product Details

Brand:	IHC-plus™
Immunogen:	Synthetic peptide located between aa161-210 of human CDX2 (Q99626, NP_001256). Percent identity by BLAST analysis: Human, Gorilla, Monkey, Galago, Marmoset, Mouse, Rat, Hamster, Elephant, Dog, Bat, Rabbit, Pig, Guinea pig, Chicken (100%), Opossum, Zebra finch (92%). Type of Immunogen: Synthetic peptide
Isotype:	IgG
Specificity:	Human CDX2
Predicted Reactivity:	Percent identity by BLAST analysis: Human, Mouse, Rat, Dog, Rabbit, Pig, Chicken (100%).
Purification:	Immunoaffinity purified

Target Details

Target:	CDX2
Alternative Name:	CDX2 (CDX2 Products)
Background:	Name/Gene ID: CDX2 Synonyms: CDX2, Caudal-type homeobox protein 2, CDX3, Homeobox protein CDX-2, Caudal type homeobox 2, CDX-3
Gene ID:	1045
NCBI Accession:	NP_001256
UniProt:	Q99626
Pathways:	Peptide Hormone Metabolism , Stem Cell Maintenance

Application Details

Application Notes:	Approved: IHC, IHC-P (5 µg/mL), WB (0.2 - 1 µg/mL) Usage: Immunohistochemistry: This antibody was validated for use in immunohistochemistry on a panel of 21 formalin-fixed, paraffin-embedded (FFPE) human tissues after heat induced antigen retrieval in pH 6.0 citrate buffer. After incubation with the primary antibody, slides were incubated with biotinylated secondary antibody, followed by alkaline phosphatase-streptavidin and chromogen. The stained slides were evaluated by a pathologist to confirm staining specificity. The optimal working concentration for this antibody was determined to be 5 µg/mL.
Comment:	Target Species of Antibody: Human
Restrictions:	For Research Use only

Handling

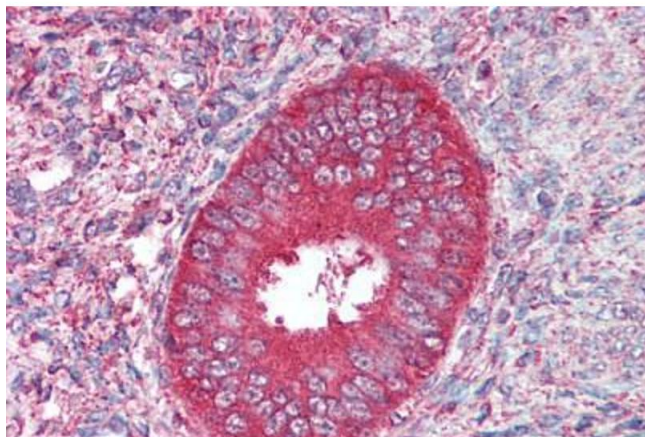
Format:	Lyophilized
Reconstitution:	Distilled water
Concentration:	Lot specific
Buffer:	Lyophilized from PBS with 2 % sucrose
Handling Advice:	Avoid repeated freezing and thawing.
Storage:	4 °C, -20 °C

Handling

Storage Comment: Long term: -20°C, the use of 50% glycerol is recommended if storing aliquots in -20°C for long term use (up to 1 year)

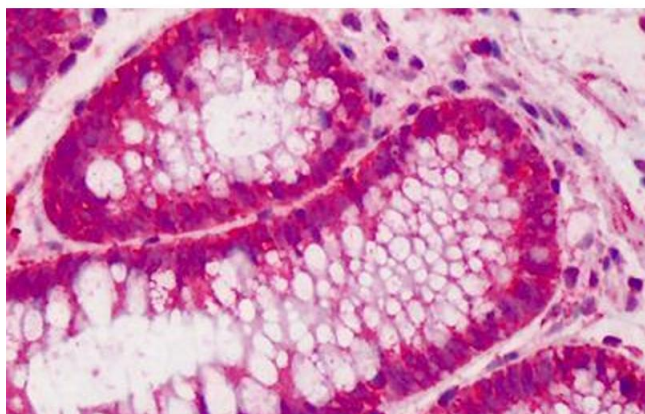
Short term (less than 1 week): 4°C. Avoid freeze-thaw cycles.

Images



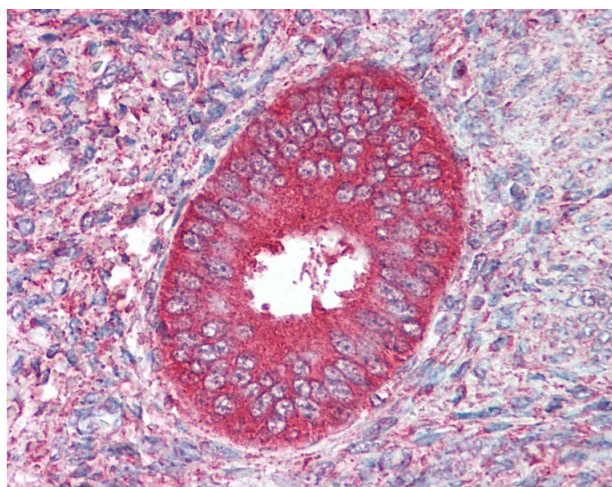
Immunohistochemistry

Image 1. Human Uterus (formalin-fixed, paraffin-embedded) stained with CDX2 antibody ABIN214089 at 5 ug/ml followed by biotinylated goat anti-rabbit IgG secondary antibody ABIN481713, alkaline phosphatase-streptavidin and chromogen.



Immunohistochemistry (Formalin-fixed Paraffin-embedded Sections)

Image 2. Human Colon: Formalin-Fixed, Paraffin-Embedded (FFPE)



Immunohistochemistry

Image 3. Anti-CDX2 antibody IHC of human uterus. Immunohistochemistry of formalin-fixed, paraffin-embedded tissue after heat-induced antigen retrieval. Antibody concentration 5 ug/ml. This image was taken for the unconjugated form of this product. Other form ...