



[Go to Product page](#)

Datasheet for ABIN214098
anti-E2F3 antibody (C-Term)

2 Images

Overview

Quantity:	50 µg
Target:	E2F3
Binding Specificity:	C-Term
Reactivity:	Human, Mouse, Rat, Cow, Dog, Guinea Pig, Horse, Bat, Pig, Hamster
Host:	Rabbit
Clonality:	Polyclonal
Conjugate:	This E2F3 antibody is un-conjugated
Application:	Western Blotting (WB), Immunohistochemistry (Paraffin-embedded Sections) (IHC (p)), Immunohistochemistry (IHC)

Product Details

Brand:	IHC-plus™
Immunogen:	Synthetic peptide from C-Terminus of human E2F3 (Q68DT0). Percent identity by BLAST analysis: Human, Chimpanzee, Gorilla, Gibbon, Monkey, Galago, Mouse, Rat, Hamster, Elephant, Dog, Bovine, Bat, Horse, Pig, Opossum, Guinea pig (100%), Marmoset, Rabbit, Turkey, Zebra finch, Chicken, Platypus, Lizard (92%), Panda (90%), Xenopus (84%). Type of Immunogen: Synthetic peptide
Isotype:	IgG
Specificity:	Human E2F3
Predicted Reactivity:	Percent identity by BLAST analysis: Human, Mouse, Dog, Bovine, Pig (100%) Rabbit, Chicken

Product Details

(92%) Xenopus (84%).

Purification: Immunoaffinity purified

Target Details

Target: E2F3

Abstract: [E2F3 Products](#)

Background: Name/Gene ID: E2F3

Synonyms: E2F3, E2F transcription factor 3, KIAA0075, Transcription factor E2F3, E2F-3

Gene ID: 1871

UniProt: [O00716](#)

Application Details

Application Notes: Approved: IHC, IHC-P (5 µg/mL), WB (0.2 - 1 µg/mL)

Usage: Immunohistochemistry: This antibody was validated for use in immunohistochemistry on a panel of 21 formalin-fixed, paraffin-embedded (FFPE) human tissues after heat induced antigen retrieval in pH 6.0 citrate buffer. After incubation with the primary antibody, slides were incubated with biotinylated secondary antibody, followed by alkaline phosphatase-streptavidin and chromogen. The stained slides were evaluated by a pathologist to confirm staining specificity. The optimal working concentration for this antibody was determined to be 5 µg/mL.

Comment: Target Species of Antibody: Human

Restrictions: For Research Use only

Handling

Format: Lyophilized

Reconstitution: Distilled water

Concentration: Lot specific

Buffer: Lyophilized from PBS with 2 % sucrose

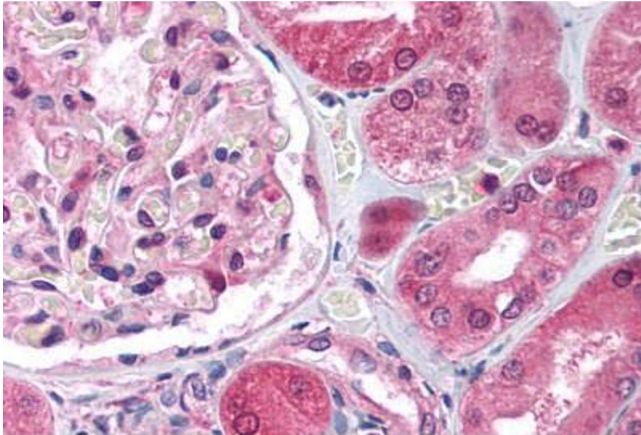
Handling Advice: Avoid repeat freeze-thaw cycles.

Handling

Storage: 4 °C, -20 °C

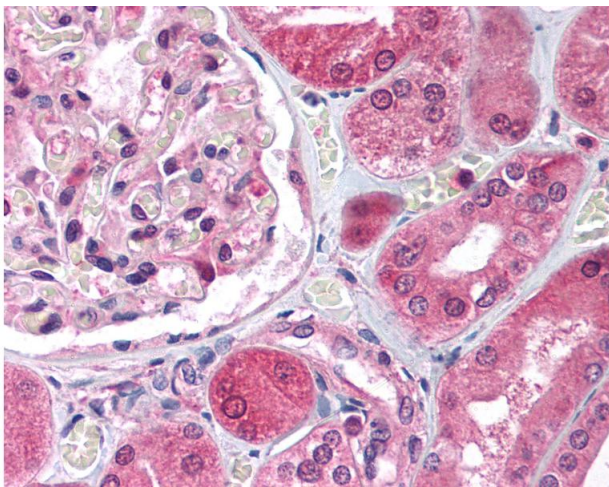
Storage Comment: Long term: -20°C, the use of 50% glycerol is recommended if storing aliquots in -20°C for long term use (up to 1 year)
Short term (less than 1 week): 4°C. Avoid freeze-thaw cycles.

Images



Immunohistochemistry

Image 1. Human Kidney (formalin-fixed, paraffin-embedded) stained with E2F3 antibody ABIN214098 at 5 ug/ml followed by biotinylated goat anti-rabbit IgG secondary antibody ABIN481713, alkaline phosphatase-streptavidin and chromogen.



Immunohistochemistry

Image 2. Anti-E2F3 antibody IHC of human kidney. Immunohistochemistry of formalin-fixed, paraffin-embedded tissue after heat-induced antigen retrieval. Antibody concentration 5 ug/ml. This image was taken for the unconjugated form of this product. Other form ...