

## Datasheet for ABIN214101 anti-EGR4 antibody (C-Term)



[Go to Product page](#)

### 2 Images

#### Overview

Quantity:	50 µg
Target:	EGR4
Binding Specificity:	C-Term
Reactivity:	Human, Mouse, Rat, Dog, Cow, Guinea Pig, Horse, Rabbit, Chicken, Monkey, Pig
Host:	Rabbit
Clonality:	Polyclonal
Conjugate:	This EGR4 antibody is un-conjugated
Application:	Western Blotting (WB), Immunohistochemistry (IHC), Immunohistochemistry (Paraffin-embedded Sections) (IHC (p))

#### Product Details

Brand:	IHC-plus™
Immunogen:	Synthetic peptide from C-Terminus of human EGR4 (Q05215, NP_001956). Percent identity by BLAST analysis: Human, Gorilla, Gibbon, Monkey, Galago, Marmoset, Mouse, Rat, Elephant, Dog, Bovine, Rabbit, Horse, Pig, Guinea pig, Turkey, Chicken (100%), Opossum (92%), Medaka, Drosophila, Water flea (90%), Xenopus (84%), Tamarin, Panda, Bat, Platypus (81%).  Type of Immunogen: Synthetic peptide
Isotype:	IgG
Specificity:	Human EGR4
Predicted Reactivity:	Percent identity by BLAST analysis: Human, Mouse, Rat, Dog, Bovine, Rabbit, Horse, Pig, Guinea

## Product Details

pig, Chicken (100%).

Purification: Immunoaffinity purified

## Target Details

Target: EGR4

Alternative Name: EGR4 / EGR-4 ([EGR4 Products](#))

Background: Name/Gene ID: EGR4

Synonyms: EGR4, AT133, Early growth response 4, NGFIC, NGFI-C, EGR-4, PAT133

Gene ID: 1961

NCBI Accession: [NP\\_001956](#)

UniProt: [Q05215](#)

## Application Details

Application Notes: Approved: IHC, IHC-P (5 µg/mL), WB (0.06 µg/mL)

Usage: Immunohistochemistry: This antibody was validated for use in immunohistochemistry on a panel of 21 formalin-fixed, paraffin-embedded (FFPE) human tissues after heat induced antigen retrieval in pH 6.0 citrate buffer. After incubation with the primary antibody, slides were incubated with biotinylated secondary antibody, followed by alkaline phosphatase-streptavidin and chromogen. The stained slides were evaluated by a pathologist to confirm staining specificity. The optimal working concentration for this antibody was determined to be 5 µg/mL.

Comment: Target Species of Antibody: Human

Restrictions: For Research Use only

## Handling

Format: Lyophilized

Reconstitution: After adding water, will consist of PBS buffer with 2 % sucrose

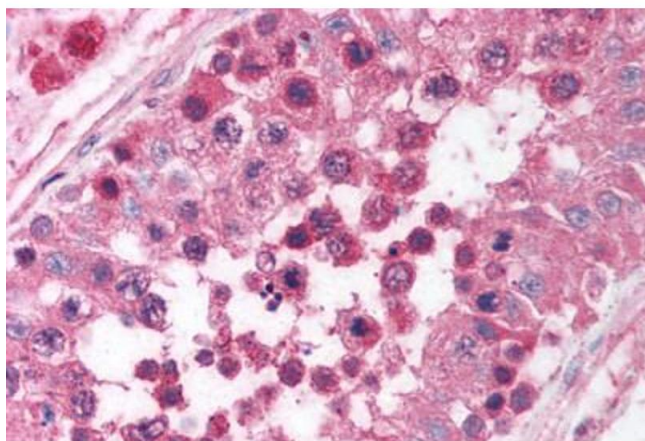
Concentration: Lot specific

Buffer: Lyophilized from PBS with 2 % sucrose

## Handling

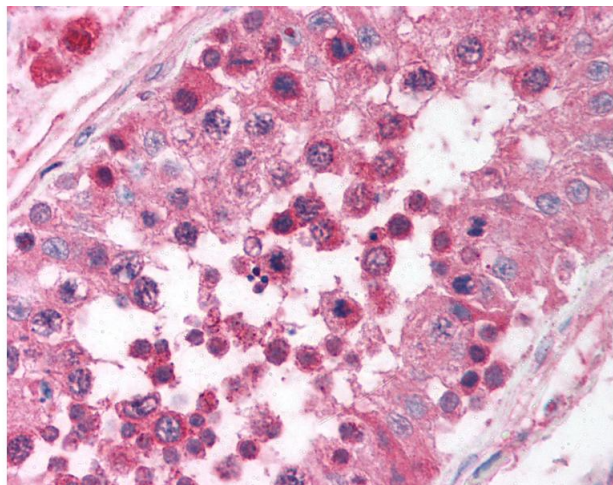
Handling Advice:	Avoid freeze-thaw cycles.
Storage:	4 °C,-20 °C
Storage Comment:	Long term: -20°C, the use of 50% glycerol is recommended if storing aliquots in -20°C for long term use (up to 1 year) Short term (less than 1 week): 4°C. Avoid freeze-thaw cycles.

## Images



### Immunohistochemistry (Paraffin-embedded Sections)

**Image 1.** Human Testis (formalin-fixed, paraffin-embedded) stained with EGR4 antibody ABIN214101 at 5 ug/ml followed by biotinylated goat anti-rabbit IgG secondary antibody ABIN481713, alkaline phosphatase-streptavidin and chromogen.



### Immunohistochemistry

**Image 2.** Anti-EGR4 antibody IHC of human testis. Immunohistochemistry of formalin-fixed, paraffin-embedded tissue after heat-induced antigen retrieval. Antibody concentration 5 ug/ml. This image was taken for the unconjugated form of this product. Other form ...