



[Go to Product page](#)

Datasheet for ABIN214103
anti-ETV4 antibody (AA 181-230)

3 Images

Overview

Quantity:	50 µg
Target:	ETV4
Binding Specificity:	AA 181-230
Reactivity:	Human, Mouse, Rat, Cow, Pig
Host:	Rabbit
Clonality:	Polyclonal
Conjugate:	This ETV4 antibody is un-conjugated
Application:	Western Blotting (WB), Immunohistochemistry (IHC), Immunohistochemistry (Paraffin-embedded Sections) (IHC (p))

Product Details

Brand:	IHC-plus™
Immunogen:	Synthetic peptide located between aa181-230 of human ETV4 (P43268, NP_001977). Percent identity by BLAST analysis: Human, Chimpanzee, Gorilla, Monkey, Galago, Mouse, Rat, Elephant, Bovine, Pig (100%), Marmoset, Bat, Rabbit, Horse (92%). Type of Immunogen: Synthetic peptide
Isotype:	IgG
Specificity:	Human ETV4 / PEA3
Predicted Reactivity:	Percent identity by BLAST analysis: Human, Mouse, Rat, Bovine, Pig (100%) Rabbit, Horse (92%).

Product Details

Purification: Immunoaffinity purified

Target Details

Target: ETV4

Alternative Name: PEA3 / ETV4 ([ETV4 Products](#))

Background: Name/Gene ID: ETV4

Synonyms: ETV4, ETS translocation variant 4, E1A-F, E1AF, Ets variant 4, PEA3, Protein PEA3, PEAS3

Gene ID: 2118

NCBI Accession: [NP_001977](#)

UniProt: [P43268](#)

Application Details

Application Notes: Approved: IHC, IHC-P (5 µg/mL), WB (0.2 - 1 µg/mL)

Usage: Immunohistochemistry: This antibody was validated for use in immunohistochemistry on a panel of 21 formalin-fixed, paraffin-embedded (FFPE) human tissues after heat induced antigen retrieval in pH 6.0 citrate buffer. After incubation with the primary antibody, slides were incubated with biotinylated secondary antibody, followed by alkaline phosphatase-streptavidin and chromogen. The stained slides were evaluated by a pathologist to confirm staining specificity. The optimal working concentration for this antibody was determined to be 5 µg/mL.

Comment: Target Species of Antibody: Human

Restrictions: For Research Use only

Handling

Format: Lyophilized

Reconstitution: Distilled water

Concentration: Lot specific

Buffer: Lyophilized from PBS with 2 % sucrose

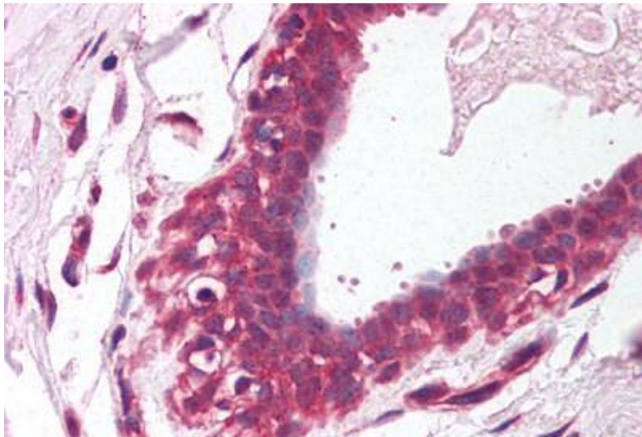
Handling Advice: Avoid repeat freeze-thaw cycles.

Handling

Storage: 4 °C, -20 °C

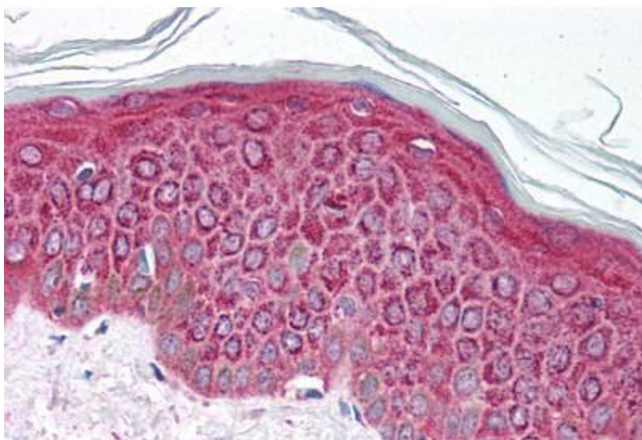
Storage Comment: Long term: -20°C, the use of 50% glycerol is recommended if storing aliquots in -20°C for long term use (up to 1 year)
Short term (less than 1 week): 4°C. Avoid freeze-thaw cycles.

Images



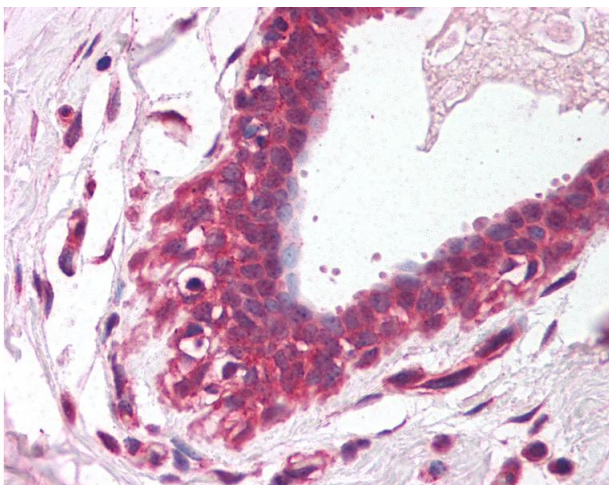
Immunohistochemistry

Image 1. Human Breast (formalin-fixed, paraffin-embedded) stained with ETV4 antibody ABIN214103 at 5 ug/ml followed by biotinylated goat anti-rabbit IgG secondary antibody ABIN481713, alkaline phosphatase-streptavidin and chromogen.



Immunohistochemistry (Paraffin-embedded Sections)

Image 2. Human Skin (formalin-fixed, paraffin-embedded) stained with ETV4 antibody ABIN214103 at 5 ug/ml followed by biotinylated goat anti-rabbit IgG secondary antibody ABIN481713, alkaline phosphatase-streptavidin and chromogen.



Immunohistochemistry

Image 3. Anti-ETV4 / PEA3 antibody IHC of human breast. Immunohistochemistry of formalin-fixed, paraffin-embedded tissue after heat-induced antigen retrieval. Antibody concentration 5 ug/ml. This image was taken for the unconjugated form of this product. Oth ...