

Datasheet for ABIN214153
anti-ZFP36 antibody (AA 84-133)[Go to Product page](#)

2 Images

Overview

Quantity:	50 µg
Target:	ZFP36
Binding Specificity:	AA 84-133
Reactivity:	Human, Mouse, Rat, Dog, Cow, Guinea Pig, Rabbit, Sheep, Pig
Host:	Rabbit
Clonality:	Polyclonal
Conjugate:	This ZFP36 antibody is un-conjugated
Application:	Western Blotting (WB), Immunohistochemistry (IHC), Immunohistochemistry (Paraffin-embedded Sections) (IHC (p))

Product Details

Brand:	IHC-plus™
Immunogen:	Synthetic peptide located between aa84-133 of human ZFP36 (P26651, NP_003398). Percent identity by BLAST analysis: Human, Chimpanzee, Gorilla, Gibbon (100%), Marmoset, Mouse, Rat, Sheep, Panda, Dog, Bovine, Rabbit, Guinea pig (85%), Elephant (83%). Type of Immunogen: Synthetic peptide
Isotype:	IgG
Specificity:	Human ZFP36
Predicted Reactivity:	Percent identity by BLAST analysis: Mouse, Rat, Sheep, Dog, Bovine, Rabbit, Guinea pig (85%).
Purification:	Immunoaffinity purified

Target Details

Target:	ZFP36
Alternative Name:	ZFP36 / Tristetraprolin (ZFP36 Products)
Background:	Name/Gene ID: ZFP36 Synonyms: ZFP36, Protein TIS11A, Tristetraprolin, ZFP36 ring finger protein, TIS11, Zinc finger protein 36 homolog, TTP, NUP475, TIS11A, Tristetraproline, Zfp-36, G0S24, GOS24, RNF162A
Gene ID:	7538
NCBI Accession:	NP_003398
UniProt:	P26651

Application Details

Application Notes:	Approved: IHC, IHC-P (5 µg/mL), WB (0.2 - 1 µg/mL) Usage: Immunohistochemistry: This antibody was validated for use in immunohistochemistry on a panel of 21 formalin-fixed, paraffin-embedded (FFPE) human tissues after heat induced antigen retrieval in pH 6.0 citrate buffer. After incubation with the primary antibody, slides were incubated with biotinylated secondary antibody, followed by alkaline phosphatase-streptavidin and chromogen. The stained slides were evaluated by a pathologist to confirm staining specificity. The optimal working concentration for this antibody was determined to be 5 µg/mL.
Comment:	Target Species of Antibody: Human
Restrictions:	For Research Use only

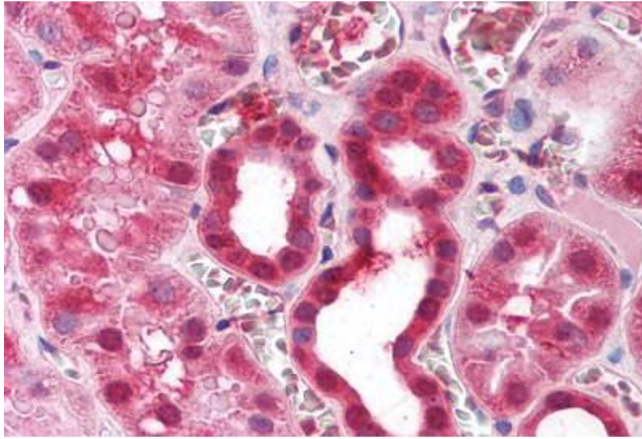
Handling

Format:	Lyophilized
Reconstitution:	After adding water, will consist of PBS buffer with 2 % sucrose
Concentration:	Lot specific
Buffer:	Lyophilized from PBS with 2 % sucrose
Handling Advice:	Avoid repeat freeze-thaw cycles.
Storage:	4 °C, -20 °C
Storage Comment:	Long term: -20°C, the use of 50% glycerol is recommended if storing aliquots in -20°C for long

term use (up to 1 year)

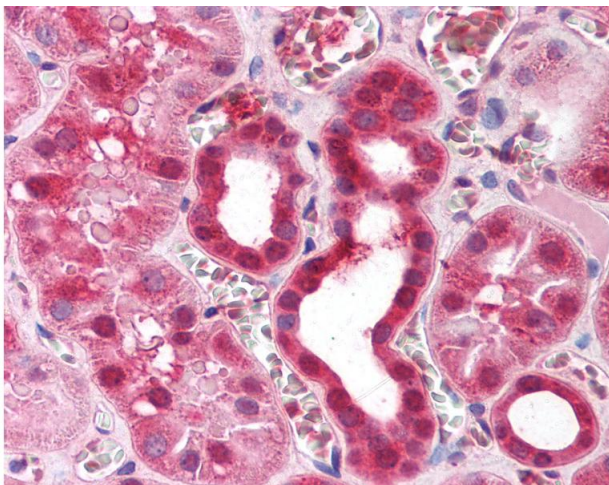
Short term (less than 1 week): 4°C. Avoid freeze-thaw cycles.

Images



Immunohistochemistry

Image 1. Human Kidney (formalin-fixed, paraffin-embedded) stained with ZFP36 antibody ABIN214153 at 5 ug/ml followed by biotinylated goat anti-rabbit IgG secondary antibody ABIN481713, alkaline phosphatase-streptavidin and chromogen.



Immunohistochemistry

Image 2. Anti-ZFP36 antibody IHC of human kidney. Immunohistochemistry of formalin-fixed, paraffin-embedded tissue after heat-induced antigen retrieval. Antibody concentration 5 ug/ml. This image was taken for the unconjugated form of this product. Other for ...