

Datasheet for ABIN214159  
**anti-ITIH1 antibody (AA 410-592)**

## 2 Images

[Go to Product page](#)

## Overview

Quantity:	50 µL
Target:	ITIH1
Binding Specificity:	AA 410-592
Reactivity:	Human
Host:	Mouse
Clonality:	Monoclonal
Conjugate:	This ITIH1 antibody is un-conjugated
Application:	Western Blotting (WB), ELISA, Immunohistochemistry (IHC), Immunohistochemistry (Paraffin-embedded Sections) (IHC (p))

## Product Details

Brand:	IHC-plus™
Immunogen:	Purified recombinant fragment of human ER-alpha (410-592aa) expressed in E. coli.  Type of Immunogen: Recombinant protein
Clone:	2B7
Isotype:	IgG1
Specificity:	Human
Purification:	Protein A purified

## Target Details

Target:	ITIH1
Alternative Name:	ITIH1 ( <a href="#">ITIH1 Products</a> )
Background:	Name/Gene ID: ITIH1  Synonyms: ITIH1, IATIH, ITI heavy chain H1, ITIH, H1P, IGHEP1, ITI-HC1, SHAP
Gene ID:	3697
UniProt:	<a href="#">P03372</a>
Pathways:	<a href="#">Glycosaminoglycan Metabolic Process</a>

## Application Details

Application Notes:	Approved: ELISA (1:10000), IHC, IHC-P (1:800), WB (1:100 - 1:500)  Usage: Immunohistochemistry: This antibody was validated for use in immunohistochemistry on a panel of 21 formalin-fixed, paraffin-embedded (FFPE) human tissues after heat induced antigen retrieval in pH 6.0 citrate buffer. After incubation with the primary antibody, slides were incubated with biotinylated secondary antibody, followed by alkaline phosphatase-streptavidin and chromogen. The stained slides were evaluated by a pathologist to confirm staining specificity. The optimal working concentration for this antibody was determined to be 1:800.
Comment:	Target Species of Antibody: Human
Restrictions:	For Research Use only

## Handling

Format:	Liquid
Concentration:	Lot specific
Buffer:	Purified antibody in PBS containing 0.03 % sodium azide
Preservative:	Sodium azide
Precaution of Use:	This product contains Sodium azide: a POISONOUS AND HAZARDOUS SUBSTANCE which should be handled by trained staff only.
Handling Advice:	Avoid repeated freezing and thawing.
Storage:	4 °C, -20 °C

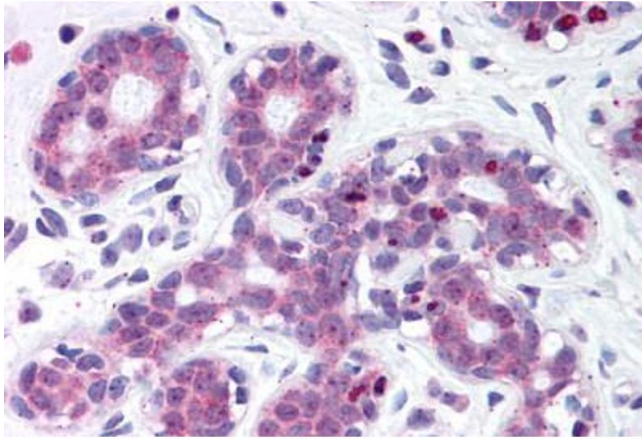
## Handling

Storage Comment:

Short term: 4°C

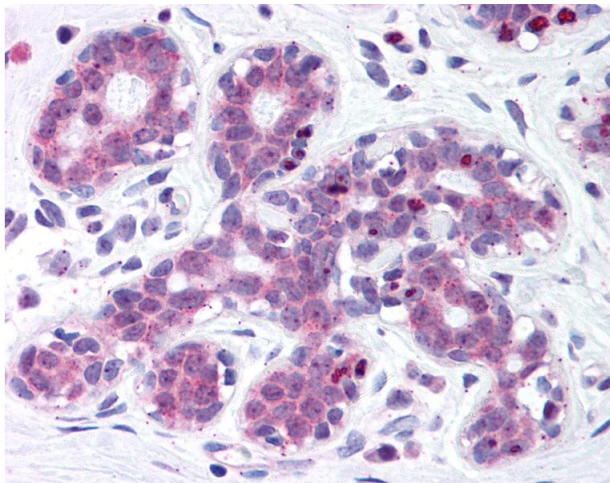
Long term: -20°C.

## Images



### Immunohistochemistry (Paraffin-embedded Sections)

**Image 1.** Human Breast (formalin-fixed, paraffin-embedded) stained with ESR1 antibody ABIN214159 at 1:800 followed by biotinylated anti-mouse IgG secondary antibody ABIN481714, alkaline phosphatase-streptavidin and chromogen.



### Immunohistochemistry

**Image 2.** Anti-Estrogen Receptor antibody IHC of human breast. Immunohistochemistry of formalin-fixed, paraffin-embedded tissue after heat-induced antigen retrieval. Antibody dilution 1:800.