

Datasheet for ABIN214166

## anti-CD101 antibody

### 2 Images



[Go to Product page](#)

### Overview

Quantity:	50 µL
Target:	CD101
Reactivity:	Human
Host:	Mouse
Clonality:	Monoclonal
Conjugate:	This CD101 antibody is un-conjugated
Application:	Immunohistochemistry (IHC), Immunohistochemistry (Frozen Sections) (IHC (fro)), ELISA, Immunohistochemistry (Paraffin-embedded Sections) (IHC (p))

### Product Details

Brand:	IHC-plus™
Immunogen:	Purified recombinant fragment of human CD-10 expressed in E. Coli.
Clone:	2A1H5E1
Isotype:	IgG2b
Specificity:	Human
Purification:	Protein G purified

### Target Details

Target:	CD101
Alternative Name:	CD101 ( <a href="#">CD101 Products</a> )

## Target Details

---

Background: Name/Gene ID: CD101  
Family: Immunoglobulin  
  
Synonyms: CD101, CD101 antigen, CD101 Molecule, Cell surface glycoprotein V7, EWI101, EWI-101, IGSF2, Leukocyte surface protein, V7

---

Gene ID: 9398

---

UniProt: [P08473](#)

---

## Application Details

---

Application Notes: Approved: ELISA (1:10000), IHC, IHC-Fr (1:200 - 1:400), IHC-P (1:100 - 1:200)

Usage: Immunohistochemistry: This antibody was validated for use in immunohistochemistry on a panel of 21 formalin-fixed, paraffin-embedded (FFPE) human tissues after heat induced antigen retrieval in pH 6.0 citrate buffer. After incubation with the primary antibody, slides were incubated with biotinylated secondary antibody, followed by alkaline phosphatase-streptavidin and chromogen. The stained slides were evaluated by a pathologist to confirm staining specificity. The optimal working concentration for this antibody was determined to be 1:100-1:200.

---

Comment: Target Species of Antibody: Human

---

Restrictions: For Research Use only

---

## Handling

---

Format: Liquid

---

Concentration: Lot specific

---

Buffer: Ascitic fluid containing 0.03 % sodium azide

---

Preservative: Sodium azide

---

Precaution of Use: This product contains Sodium azide: a POISONOUS AND HAZARDOUS SUBSTANCE which should be handled by trained staff only.

---

Handling Advice: Avoid repeat freeze-thaw cycles.

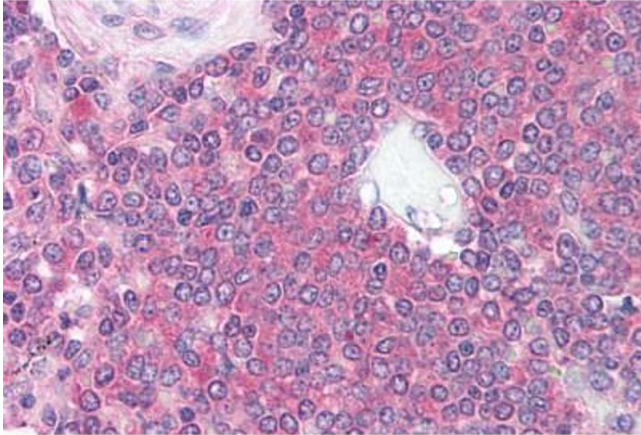
---

Storage: 4 °C,-20 °C

---

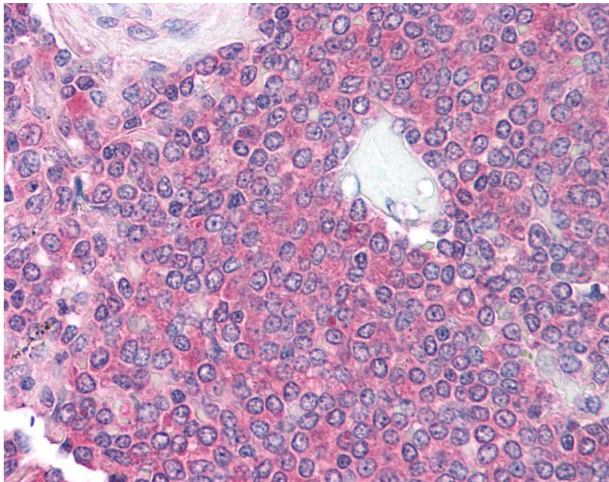
Storage Comment: Short term: 4°C

---



#### Immunohistochemistry (Paraffin-embedded Sections)

**Image 1.** Human Spleen (formalin-fixed, paraffin-embedded) stained with MME antibody ABIN214166 at 1:100-1:200 followed by biotinylated anti-mouse IgG secondary antibody ABIN481714, alkaline phosphatase-streptavidin and chromogen.



#### Immunohistochemistry

**Image 2.** Anti-CD10 antibody IHC of human spleen. Immunohistochemistry of formalin-fixed, paraffin-embedded tissue after heat-induced antigen retrieval. Antibody dilution 1:100.