



[Go to Product page](#)

Datasheet for ABIN214172

## anti-MCOLN1 antibody (AA 101-150)

### 2 Images

#### Overview

Quantity:	50 µg
Target:	MCOLN1
Binding Specificity:	AA 101-150
Reactivity:	Human, Dog, Pig, Rabbit, Bat, Monkey
Host:	Rabbit
Clonality:	Polyclonal
Conjugate:	This MCOLN1 antibody is un-conjugated
Application:	Western Blotting (WB), Immunohistochemistry (IHC), Immunohistochemistry (Paraffin-embedded Sections) (IHC (p))

#### Product Details

Brand:	IHC-plus™
Immunogen:	Synthetic peptide located between aa101-150 of human MCOLN1 (Q9GZU1, NP_065394). Percent identity by BLAST analysis: Human, Chimpanzee, Gorilla, Gibbon, Monkey, Galago, Marmoset, Elephant, Dog, Bat, Rabbit, Pig (100%), Mouse, Rat, Bovine, Horse, Guinea pig (92%).  Type of Immunogen: Synthetic peptide
Specificity:	Human MCOLN1 / Muco lipin 1
Predicted Reactivity:	Percent identity by BLAST analysis: Human, Dog, Rabbit, Pig (100%) Rat, Bovine, Horse, Guinea pig (92%).
Purification:	Immunoaffinity purified

## Target Details

---

Target:	MCOLN1
Alternative Name:	MCOLN1 / Mucolipin 1 ( <a href="#">MCOLN1 Products</a> )
Background:	Name/Gene ID: MCOLN1 Subfamily: Calcium channel - TRP Family: Ion Channel  Synonyms: MCOLN1, MLIV, ML4, Mucolipidin, Mucolipin 1, MSTP080, Mucolipidosis type IV protein, Mucolipin-1, TRP-ML1, TRPM-L1, MG-2, MST080, TRPML1
Gene ID:	57192
NCBI Accession:	<a href="#">NP_065394</a>
UniProt:	<a href="#">Q9GZU1</a>
Pathways:	<a href="#">Transition Metal Ion Homeostasis</a>

## Application Details

---

Application Notes:	Approved: IHC, IHC-P (20 µg/mL), WB (0.2 - 1 µg/mL)  Usage: Immunohistochemistry: This antibody was validated for use in immunohistochemistry on a panel of 21 formalin-fixed, paraffin-embedded (FFPE) human tissues after heat induced antigen retrieval in pH 6.0 citrate buffer. After incubation with the primary antibody, slides were incubated with biotinylated secondary antibody, followed by alkaline phosphatase-streptavidin and chromogen. The stained slides were evaluated by a pathologist to confirm staining specificity. The optimal working concentration for this antibody was determined to be 20 µg/mL.
Comment:	Target Species of Antibody: Human
Restrictions:	For Research Use only

## Handling

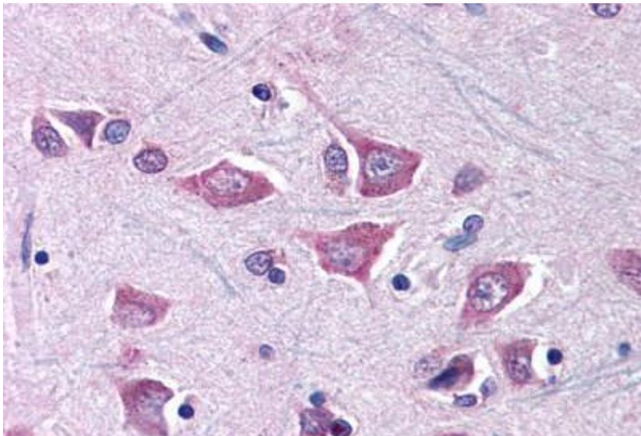
---

Format:	Lyophilized
Reconstitution:	After adding water, will consist of PBS buffer with 2 % sucrose
Concentration:	Lot specific
Buffer:	Lyophilized from PBS with 2 % sucrose

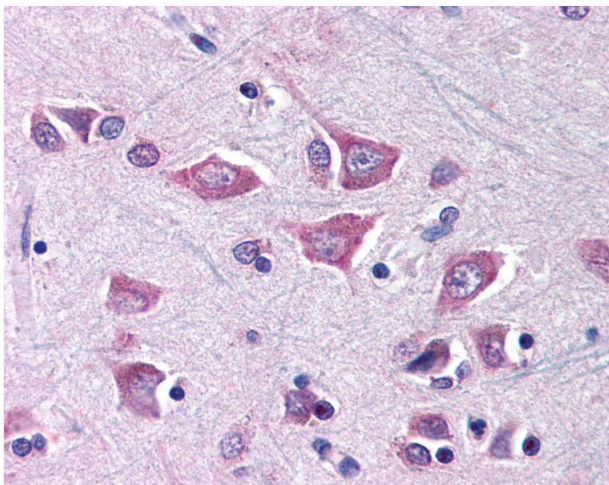
## Handling

Handling Advice:	Avoid repeat freeze-thaw cycles.
Storage:	4 °C,-20 °C
Storage Comment:	Long term: -20°C, the use of 50% glycerol is recommended if storing aliquots in -20°C for long term use (up to 1 year) Short term (less than 1 week): 4°C. Avoid freeze-thaw cycles.

## Images



**Image 1.** Brain, cortex



### Immunohistochemistry

**Image 2.** Anti-MCOLN1 / Mucolipin 1 antibody IHC of human brain, cortex. Immunohistochemistry of formalin-fixed, paraffin-embedded tissue after heat-induced antigen retrieval. Antibody concentration 20 ug/ml. This image was taken for the unconjugated form of ...