

Datasheet for ABIN214184  
**anti-SCN3B antibody (AA 65-114)**

## 2 Images

[Go to Product page](#)

## Overview

Quantity:	50 µg
Target:	SCN3B
Binding Specificity:	AA 65-114
Reactivity:	Rat, Human, Mouse, Cow, Horse, Rabbit, Monkey
Host:	Rabbit
Clonality:	Polyclonal
Conjugate:	This SCN3B antibody is un-conjugated
Application:	Western Blotting (WB), Immunohistochemistry (Paraffin-embedded Sections) (IHC (p)), Immunohistochemistry (IHC)

## Product Details

Brand:	IHC-plus™
Immunogen:	Synthetic peptide located between aa65-114 of human SCN3B (Q9NY72, NP_060870). Percent identity by BLAST analysis: Human, Chimpanzee, Gorilla, Gibbon, Monkey, Galago, Marmoset, Mouse, Rat, Bovine, Rabbit, Horse, Platypus (100%), Elephant, Panda, Dog, Opossum, Guinea pig (92%).  Type of Immunogen: Synthetic peptide
Specificity:	Human SCN3B
Predicted Reactivity:	Percent identity by BLAST analysis: Human, Mouse, Rat, Bovine, Rabbit (100%) Dog, Guinea pig (92%).

## Product Details

Purification: Immunoaffinity purified

## Target Details

Target: SCN3B

Alternative Name: SCN3B ([SCN3B Products](#))

Background: Name/Gene ID: SCN3B  
Subfamily: Sodium channel - voltage-gated  
Family: Ion Channel  
  
Synonyms: SCN3B, KIAA1158, HSA243396, SCNB3, Sodium channel subunit beta-3, Navbeta3, Sodium channel beta-3 subunit

Gene ID: 55800

NCBI Accession: [NP\\_060870](#)

UniProt: [Q9NY72](#)

## Application Details

Application Notes: Approved: IHC, IHC-P (1.25 µg/mL), WB (0.2 - 1 µg/mL)

Usage: Immunohistochemistry: This antibody was validated for use in immunohistochemistry on a panel of 21 formalin-fixed, paraffin-embedded (FFPE) human tissues after heat induced antigen retrieval in pH 6.0 citrate buffer. After incubation with the primary antibody, slides were incubated with biotinylated secondary antibody, followed by alkaline phosphatase-streptavidin and chromogen. The stained slides were evaluated by a pathologist to confirm staining specificity. The optimal working concentration for this antibody was determined to be 1.25 µg/mL.

Comment: Target Species of Antibody: Human

Restrictions: For Research Use only

## Handling

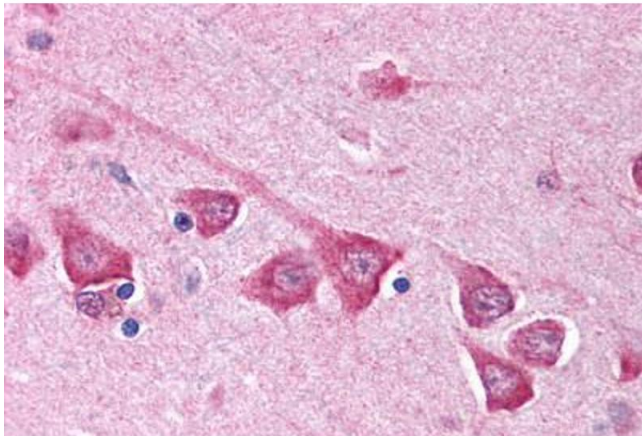
Format: Lyophilized

Reconstitution: Distilled water

## Handling

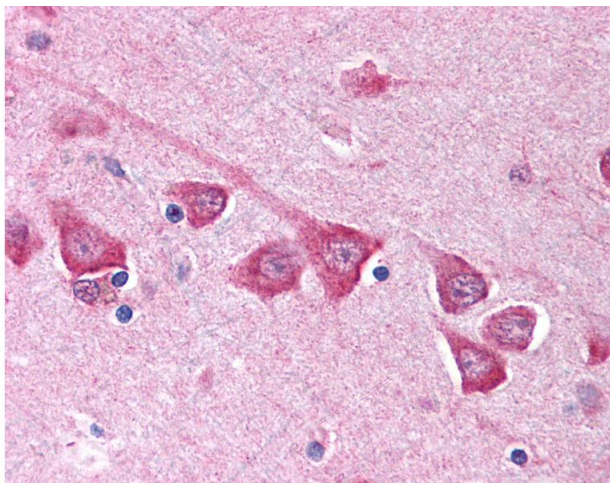
Concentration:	Lot specific
Buffer:	Lyophilized from PBS with 2 % sucrose
Handling Advice:	Avoid repeat freeze-thaw cycles.
Storage:	4 °C,-20 °C
Storage Comment:	Long term: -20°C, the use of 50% glycerol is recommended if storing aliquots in -20°C for long term use (up to 1 year) Short term (less than 1 week): 4°C. Avoid freeze-thaw cycles.

## Images



### Immunohistochemistry

**Image 1.** Brain, cortex



### Immunohistochemistry

**Image 2.** Anti-SCN3B antibody IHC of human brain, cortex. Immunohistochemistry of formalin-fixed, paraffin-embedded tissue after heat-induced antigen retrieval. Antibody concentration 1.25 ug/ml. This image was taken for the unconjugated form of this product. ...