

Datasheet for ABIN214199
anti-PLA2G2A antibody

2 Images



[Go to Product page](#)

Overview

Quantity:	350 µg
Target:	PLA2G2A
Reactivity:	Human
Host:	Mouse
Clonality:	Monoclonal
Conjugate:	This PLA2G2A antibody is un-conjugated
Application:	Western Blotting (WB), Immunoprecipitation (IP), Immunohistochemistry (Paraffin-embedded Sections) (IHC (p))

Product Details

Immunogen:	Recombinant human PLA2G2A.
Isotype:	IgG1
Specificity:	Recombinant human sPLA2 Type IIA
Purification:	Ammonium Sulfate Precipitation

Target Details

Target:	PLA2G2A
Alternative Name:	SPLA2 / PLA2 (PLA2G2A Products)
Background:	Standard Gene Symbol: PLA2G2A, Gene Family: Phospholipase, Synonyms: PLA2G2A, GIIC sPLA2, Group IIA phospholipase A2, MOM1, PLA2L, PLA2S, NPS-PLA2, PLAS1, PLA2, PLA2B, RASF-A, SPLA2

Target Details

Gene ID: 5320

Pathways: [Stem Cell Maintenance, Inositol Metabolic Process](#)

Application Details

Application Notes: IHC-P (5 µg/mL), IP, WB

Restrictions: For Research Use only

Handling

Format: Liquid

Concentration: Lot specific

Buffer: PBS, pH 7.4, 0.5% mg/mL BSA, 0.02% sodium azide, 50% glycerol.

Preservative: Sodium azide

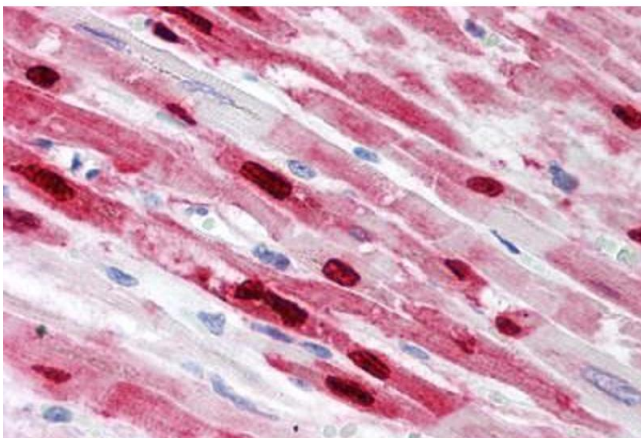
Precaution of Use: This product contains sodium azide: a POISONOUS AND HAZARDOUS SUBSTANCE which should be handled by trained staff only.

Handling Advice: Avoid repeated freezing and thawing.

Storage: 4 °C/-20 °C

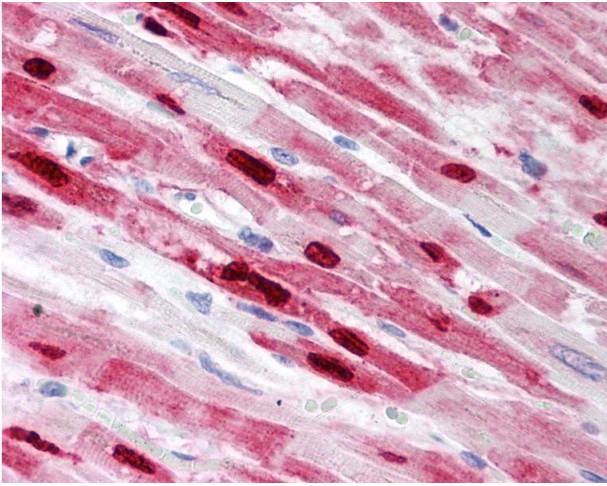
Storage Comment: Avoid repeated freezing and thawing.

Images



Immunohistochemistry

Image 1. Human Heart (formalin-fixed, paraffin-embedded) stained with PLA2G2A antibody ABIN214199 at 5 mg/ml followed by biotinylated anti-mouse IgG secondary antibody ABIN481714, alkaline phosphatase-streptavidin and chromogen.



Immunohistochemistry

Image 2. Anti-PLA2G2A antibody IHC of human heart. Immunohistochemistry of formalin-fixed, paraffin-embedded tissue after heat-induced antigen retrieval. Antibody concentration 5 ug/ml.