

Datasheet for ABIN2142002  
**anti-Flotillin 2 antibody**



[Go to Product page](#)

3 Images

## Overview

Quantity:	100 µL
Target:	Flotillin 2 (FLOT2)
Reactivity:	Chemical
Host:	Rabbit
Clonality:	Polyclonal
Conjugate:	This Flotillin 2 antibody is un-conjugated
Application:	Western Blotting (WB), Immunohistochemistry (Paraffin-embedded Sections) (IHC (p)), Immunofluorescence (IF), Immunocytochemistry (ICC)

## Product Details

Immunogen:	Flotillin 2 antibody was raised in rabbit using a synthetic peptide corresponding to a region within amino acids 365 and 428 of Flotillin-2
Isotype:	IgG
Purification:	Flotillin 2 antibody was purified by antigen-affinity chromatography

## Target Details

Target:	Flotillin 2 (FLOT2)
Alternative Name:	Flotillin 2 ( <a href="#">FLOT2 Products</a> )
Target Type:	Chemical
Molecular Weight:	47 kDa

## Application Details

Application Notes: IF:1:100-1:200, IHC-P: 1:100-1:250, ICC:1:100-1:200, WB: 1:500-1:3000

Restrictions: For Research Use only

## Handling

Format: Liquid

Concentration: Lot specific

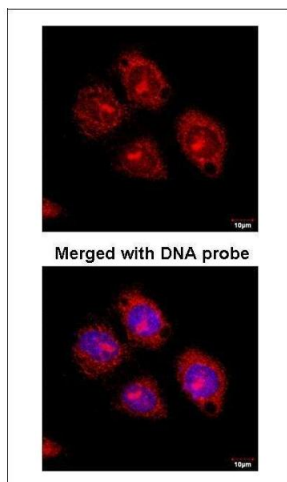
Buffer: as a concentrated solution containing 1X PBS, 20 % Glycerol ( pH 7.0). 0.01 % Thimerosal was added as a preservative.

Handling Advice: Avoid repeated freeze/thaw cycles

Storage: -20 °C

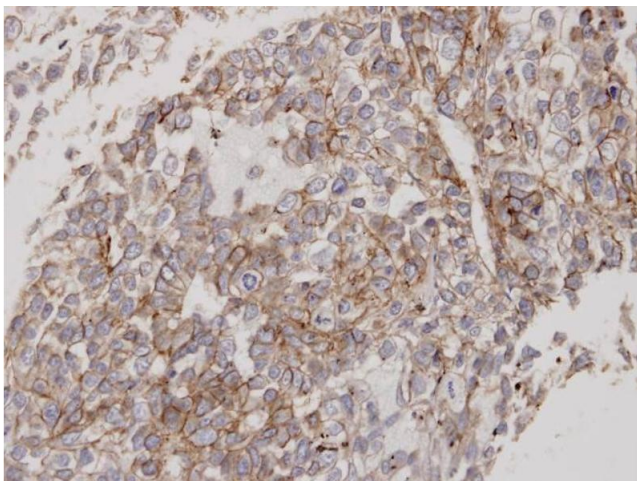
Storage Comment: Store at 4 °C for short term storage. Aliquot and store at -20 °C for long term storage.

## Images



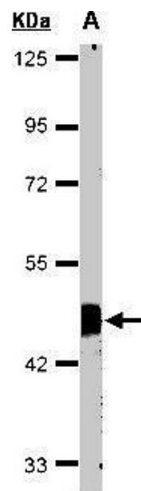
### Immunofluorescence

**Image 1.** Immunofluorescence analysis of paraformaldehyde-fixed HeLaS3, using Flotillin-2 antibody at 1:100 dilution.



### Immunohistochemistry

**Image 2.** Immunohistochemical staining of paraffin-embedded Lung CA using Flotillin 2 antibody at a dilution of 1:100



### Western Blotting

**Image 3.** Western blot analysis of 30 ug of whole cell lysate (A:HeLa S3) using a 10 % SDS PAGE gel and Flotillin 2 antibody at a dilution of 1:1000