

Datasheet for ABIN214242
anti-ERCC3 antibody (C-Term)

2 Images

[Go to Product page](#)

Overview

Quantity:	50 µg
Target:	ERCC3
Binding Specificity:	C-Term
Reactivity:	Human
Host:	Rabbit
Clonality:	Polyclonal
Conjugate:	This ERCC3 antibody is un-conjugated
Application:	Western Blotting (WB), Immunohistochemistry (IHC), Immunohistochemistry (Paraffin-embedded Sections) (IHC (p))

Product Details

Brand:	IHC-plus™
Immunogen:	Synthetic peptide from human ERCC3 / XPB. Type of Immunogen: Synthetic peptide
Isotype:	IgG
Specificity:	Peptide corresponding to the carboxy-terminus of human XPB.

Target Details

Target:	ERCC3
Alternative Name:	ERCC3 / XPB (ERCC3 Products)

Target Details

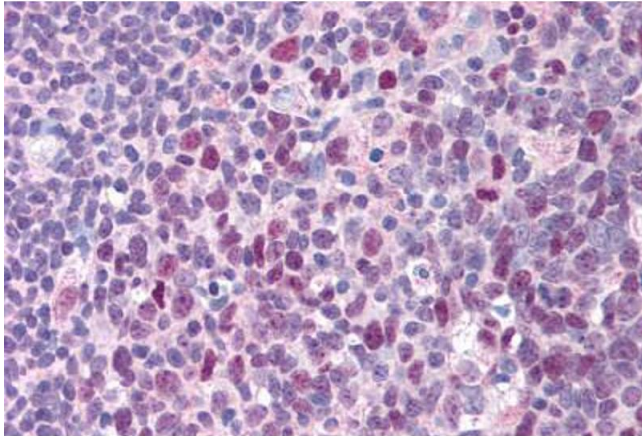
Background:	Name/Gene ID: ERCC3 Synonyms: ERCC3, BTF2, GTF2H, RAD25, TFIIH p89, TFIIH, XPB, BTF2 p89, XPBC, TFIIH 89 kDa subunit
Gene ID:	2071
UniProt:	P19447
Pathways:	DNA Damage Repair

Application Details

Application Notes:	Approved: IHC, IHC-P (10 µg/mL), WB Usage: Immunohistochemistry: This antibody was validated for use in immunohistochemistry on a panel of 21 formalin-fixed, paraffin-embedded (FFPE) human tissues after heat induced antigen retrieval in pH 6.0 citrate buffer. After incubation with the primary antibody, slides were incubated with biotinylated secondary antibody, followed by alkaline phosphatase-streptavidin and chromogen. The stained slides were evaluated by a pathologist to confirm staining specificity. The optimal working concentration for this antibody was determined to be 10 µg/mL.
Comment:	Target Species of Antibody: Human
Restrictions:	For Research Use only

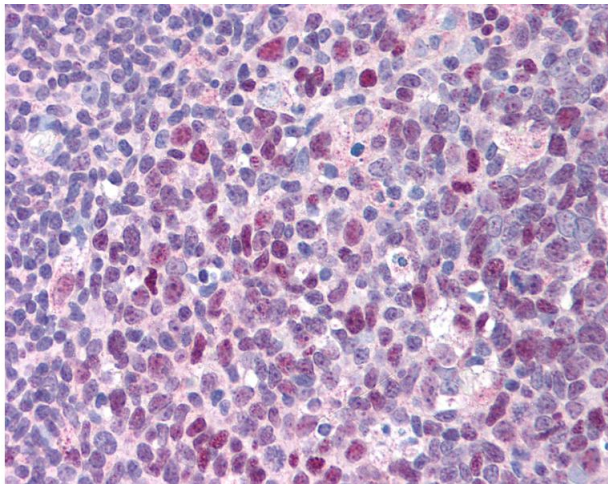
Handling

Format:	Liquid
Concentration:	Lot specific
Buffer:	PBS.
Storage:	-80 °C
Storage Comment:	Short term: -70°C Long term: -70°C.



Immunohistochemistry (Paraffin-embedded Sections)

Image 1. Human Tonsil (formalin-fixed, paraffin-embedded) stained with ERCC3 antibody ABIN214242 at 10 ug/ml followed by biotinylated goat anti-rabbit IgG secondary antibody ABIN481713, alkaline phosphatase-streptavidin and chromogen.



Immunohistochemistry

Image 2. Anti-ERCC3 / XPB antibody IHC of human tonsil. Immunohistochemistry of formalin-fixed, paraffin-embedded tissue after heat-induced antigen retrieval. Antibody concentration 10 ug/ml.