

Datasheet for ABIN214270
anti-DCBLD2 antibody (AA 399-416)

2 Images

[Go to Product page](#)

Overview

Quantity:	50 µg
Target:	DCBLD2
Binding Specificity:	AA 399-416
Reactivity:	Human, Mouse, Rat, Hamster
Host:	Rabbit
Clonality:	Polyclonal
Conjugate:	This DCBLD2 antibody is un-conjugated
Application:	ELISA, Western Blotting (WB), Immunohistochemistry (IHC), Immunohistochemistry (Paraffin-embedded Sections) (IHC (p))

Product Details

Brand:	IHC-plus™
Immunogen:	Synthetic peptide from human DCBLD2. Percent identity by BLAST analysis: Mouse, Rat, Hamster (100%), Human, Gorilla, Gibbon, Marmoset, Elephant, Panda, Bovine, Dog, Bat, Horse, Rabbit (94%), Monkey, Platypus (89%). Type of Immunogen: Synthetic peptide
Isotype:	IgG
Specificity:	Residues 399-416 [QDKIFQGNKDYHKDVRNN] of the human ESDN protein
Predicted Reactivity:	Percent identity by BLAST analysis: Mouse, Rat, Hamster (100%) Human, Gorilla, Gibbon, Marmoset, Elephant, Panda, Bovine, Dog, Bat, Horse, Rabbit (94%) Monkey, Platypus (89%).

Product Details

Purification: Immunoaffinity purified

Target Details

Target: DCBLD2

Alternative Name: DCBLD2 ([DCBLD2 Products](#))

Background: Name/Gene ID: DCBLD2

Synonyms: DCBLD2, CLCP1, ESDN

Gene ID: 131566

UniProt: [Q96PD2](#)

Application Details

Application Notes: Approved: ELISA, IHC, IHC-P (2.5 µg/mL), WB (1:500 - 1:1000)

Usage: Immunohistochemistry: This antibody was validated for use in immunohistochemistry on a panel of 21 formalin-fixed, paraffin-embedded (FFPE) human tissues after heat induced antigen retrieval in pH 6.0 citrate buffer. After incubation with the primary antibody, slides were incubated with biotinylated secondary antibody, followed by alkaline phosphatase-streptavidin and chromogen. The stained slides were evaluated by a pathologist to confirm staining specificity. The optimal working concentration for this antibody was determined to be 2.5 µg/mL.

Comment: Target Species of Antibody: Human

Restrictions: For Research Use only

Handling

Format: Liquid

Concentration: Lot specific

Buffer: PBS, 0.02 % sodium azide.

Preservative: Sodium azide

Precaution of Use: This product contains Sodium azide: a POISONOUS AND HAZARDOUS SUBSTANCE which should be handled by trained staff only.

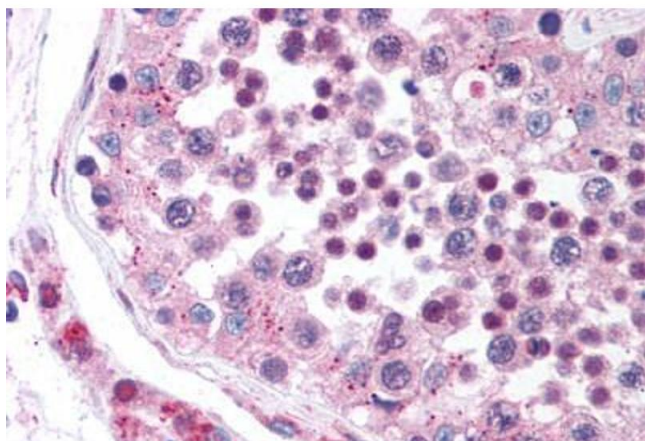
Handling

Handling Advice: avoid freeze thaw cycles.

Storage: 4 °C, -20 °C

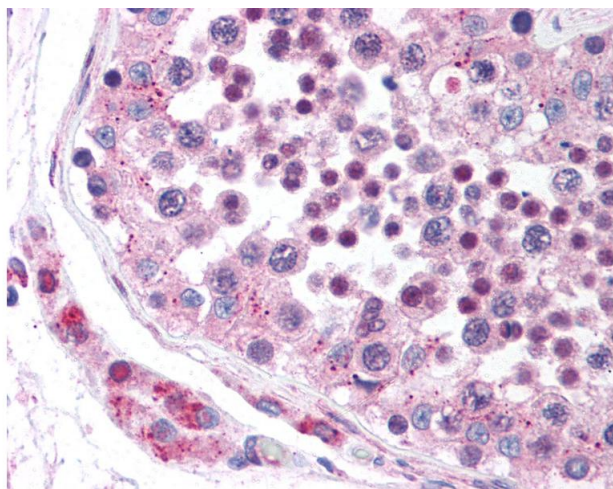
Storage Comment: Short term 4°C, long term aliquot and store at -20°C, avoid freeze-thaw cycles.

Images



Immunohistochemistry (Paraffin-embedded Sections)

Image 1. Human Testis (formalin-fixed, paraffin-embedded) stained with DCBLD2 antibody ABIN214270 at 2.5 ug/ml followed by biotinylated goat anti-rabbit IgG secondary antibody ABIN481713, alkaline phosphatase-streptavidin and chromogen.



Immunohistochemistry

Image 2. Anti-DCBLD2 antibody IHC of human testis. Immunohistochemistry of formalin-fixed, paraffin-embedded tissue after heat-induced antigen retrieval. Antibody concentration 5 ug/ml.