

Datasheet for ABIN2143757

anti-CCL1 antibody**1** Image[Go to Product page](#)

Overview

Quantity:	100 µL
Target:	CCL1
Reactivity:	Streptomyces hydrogenans
Host:	Rabbit
Clonality:	Polyclonal
Application:	Western Blotting (WB)

Product Details

Isotype:	IgG
Purification:	I309 antibody was purified by antigen-affinity chromatography

Target Details

Target:	CCL1
Abstract:	CCL1 Products
Molecular Weight:	11 kDa

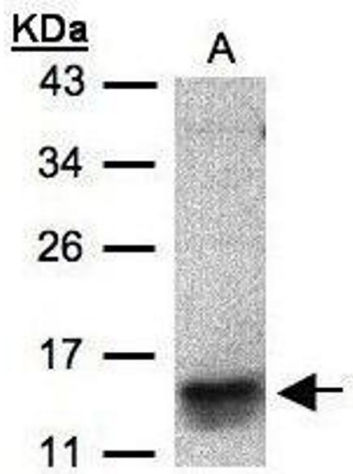
Application Details

Application Notes:	WB: 1:500-1:3000
Restrictions:	For Research Use only

Handling

Format:	Liquid
Concentration:	Lot specific
Buffer:	as a concentrated solution containing 0.1M Tris, 0.1M Glycine, 10 % Glycerol (pH 7.0). 0.01 % Thimerosal was added as a preservative.
Handling Advice:	Avoid repeated freeze/thaw cycles
Storage:	-20 °C
Storage Comment:	Store at 4 °C for short term storage. Aliquot and store at -20 °C for long term storage.

Images



Western Blotting

Image 1. Western blot analysis of 30 ug of whole cell lysate (A: MOLT4) using a 15 % SDS PAGE gel and I309 antibody at a dilution of 1:500