

Datasheet for ABIN214431  
**anti-CARD9 antibody (AA 521-536)**[Go to Product page](#)

## 2 Images

## Overview

Quantity:	50 µg
Target:	CARD9
Binding Specificity:	AA 521-536
Reactivity:	Human, Monkey
Host:	Rabbit
Clonality:	Polyclonal
Conjugate:	This CARD9 antibody is un-conjugated
Application:	Western Blotting (WB), Immunohistochemistry (IHC), Immunocytochemistry (ICC), Immunohistochemistry (Paraffin-embedded Sections) (IHC (p))

## Product Details

Brand:	IHC-plus™
Isotype:	IgG
Predicted Reactivity:	Percent identity by BLAST analysis: Human, Gorilla, Gibbon, Marmoset (100%) Mouse, Elephant, Panda, Dog, Horse, Opossum (94%) Monkey, Rat (88%) Bovine, Turkey, Chicken (81%).
Purification:	Immunoaffinity purified

## Target Details

Target:	CARD9
Alternative Name:	CARD9 ( <a href="#">CARD9 Products</a> )

## Target Details

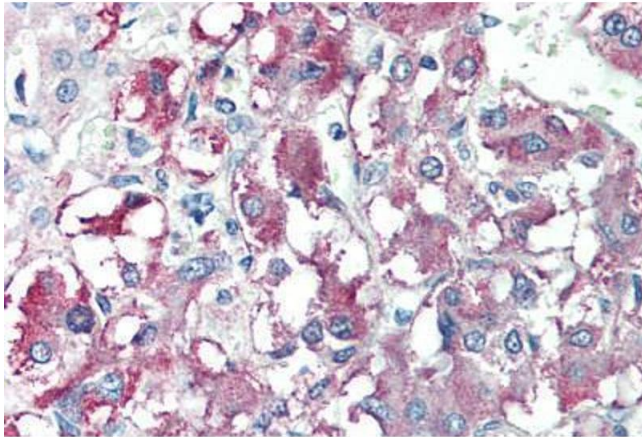
Background:	Name/Gene ID: CARD9 Family: Apoptosis  Synonyms: CARD9, CANDF2, HCARD9
Gene ID:	64170
UniProt:	<a href="#">Q9H257</a>
Pathways:	<a href="#">Activation of Innate immune Response</a>

## Application Details

Application Notes:	Approved: ICC, IHC, IHC-P (10 µg/mL), WB (0.5 - 1 µg/mL)  Usage: Immunohistochemistry: This antibody was validated for use in immunohistochemistry on a panel of 21 formalin-fixed, paraffin-embedded (FFPE) human tissues after heat induced antigen retrieval in pH 6.0 citrate buffer. After incubation with the primary antibody, slides were incubated with biotinylated secondary antibody, followed by alkaline phosphatase-streptavidin and chromogen. The stained slides were evaluated by a pathologist to confirm staining specificity. The optimal working concentration for this antibody was determined to be 10 µg/mL.
Comment:	Target Species of Antibody: Human
Restrictions:	For Research Use only

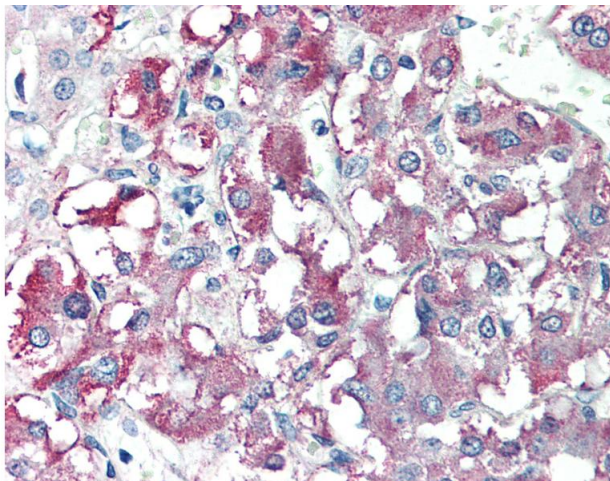
## Handling

Format:	Liquid
Concentration:	Lot specific
Buffer:	PBS, 0.02 % sodium azide.
Preservative:	Sodium azide
Precaution of Use:	This product contains Sodium azide: a POISONOUS AND HAZARDOUS SUBSTANCE which should be handled by trained staff only.
Handling Advice:	avoid freeze thaw cycles. Store undiluted.
Storage:	4 °C, -20 °C
Storage Comment:	Store at 4°C for 3 months and -20°C, stable for up to 1 year. Avoid repeated freeze-thaw cycles.



#### Immunohistochemistry (Paraffin-embedded Sections)

**Image 1.** Human Adrenal (formalin-fixed, paraffin-embedded) stained with CARD9 antibody ABIN214431 at 10 ug/ml followed by biotinylated goat anti-rabbit IgG secondary antibody ABIN481713, alkaline phosphatase-streptavidin and chromogen.



#### Immunohistochemistry

**Image 2.** Anti-CARD9 antibody IHC of human adrenal. Immunohistochemistry of formalin-fixed, paraffin-embedded tissue after heat-induced antigen retrieval. Antibody concentration 10 ug/ml.